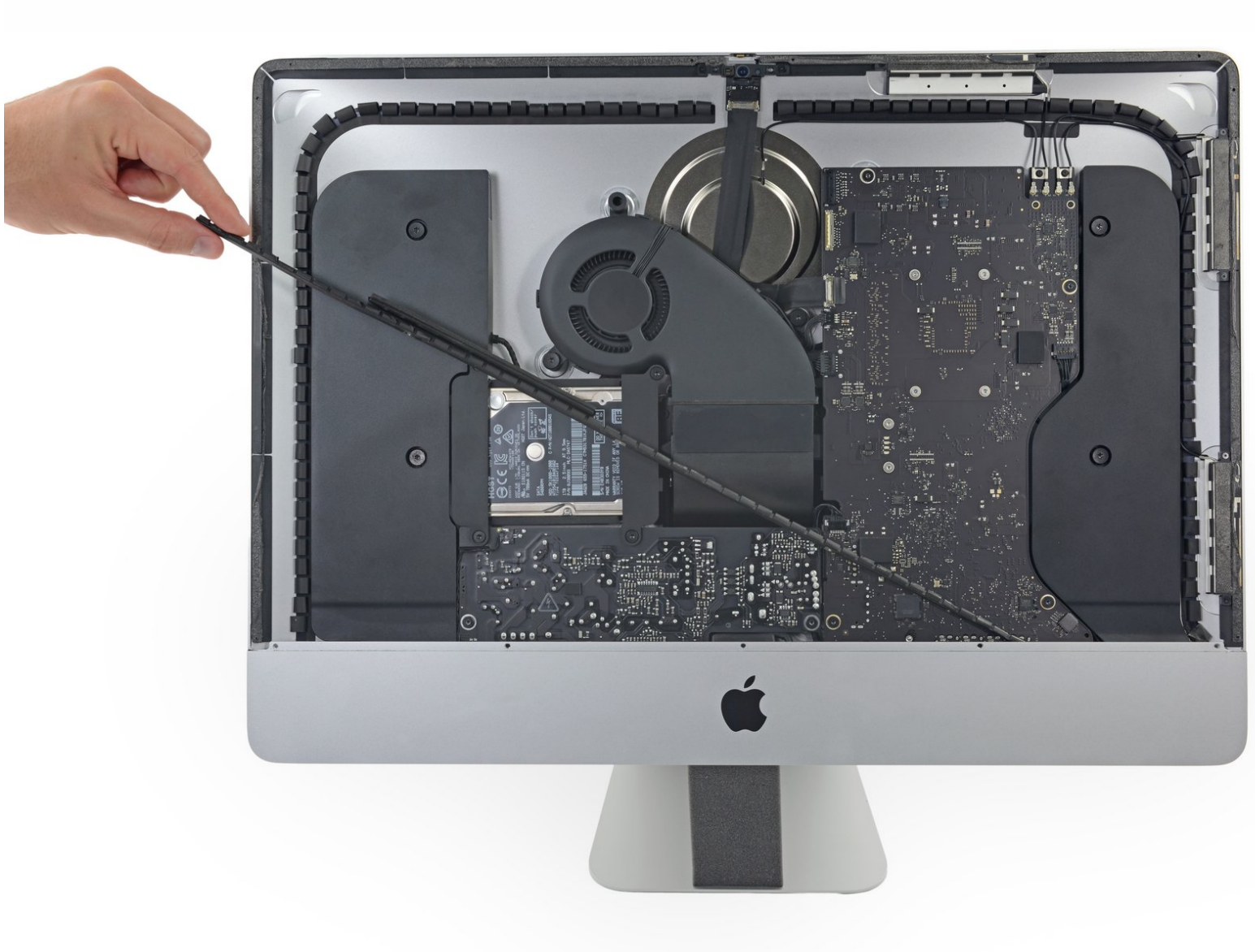




iMac Intel 21.5" Retina 4K Display Lower Support Bracket Replacement

Prerequisite for removing the lower support bracket in an iMac.

Written By: Evan Noronha



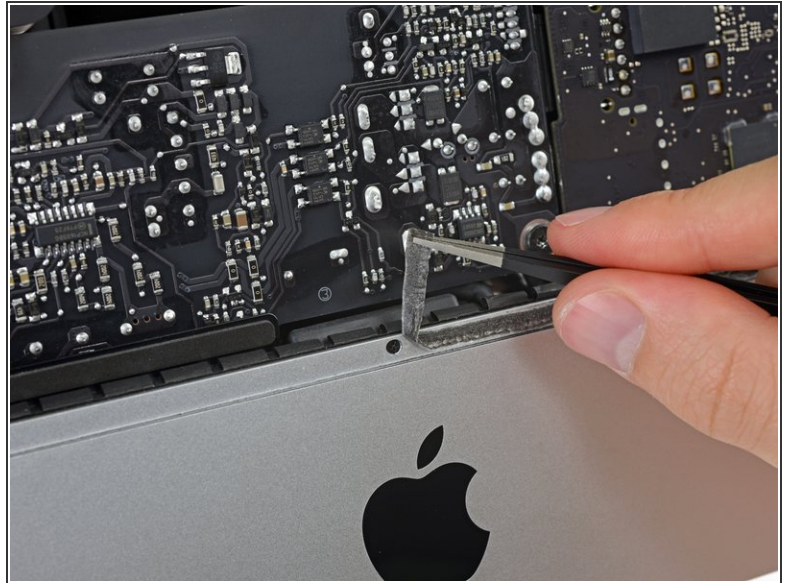
INTRODUCTION

Prereq-only guide for removing the lower support bracket in an iMac.

TOOLS:

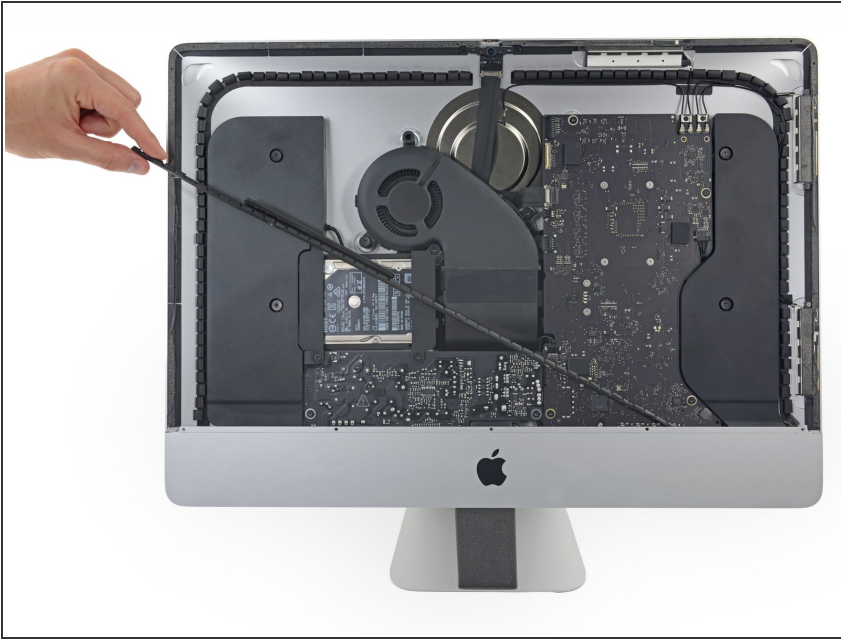
- [Tweezers](#) (1)
 - [Phillips #00 Screwdriver](#) (1)
-

Step 1 — Lower Support Bracket



- Remove the following five Phillips screws holding the lower support bracket in place:
 - Four 3.2 mm screws
 - One 1.7 mm screw
- ⓘ On at least some EMC 2544 machines, all five screws are the same size.
- ⓘ You may need to peel up the display adhesive lining the bottom edge of the iMac enclosure to access the screws.

Step 2



- Remove the lower support bracket from the iMac enclosure.

To reassemble your device, follow these instructions in reverse order.