



# Disassembling Asus Eee PC 1000HE Lower Assembly

How to take apart the lower portion of the laptop containing the motherboard, keyboard, touchpad and peripherals.

Written By: adammw

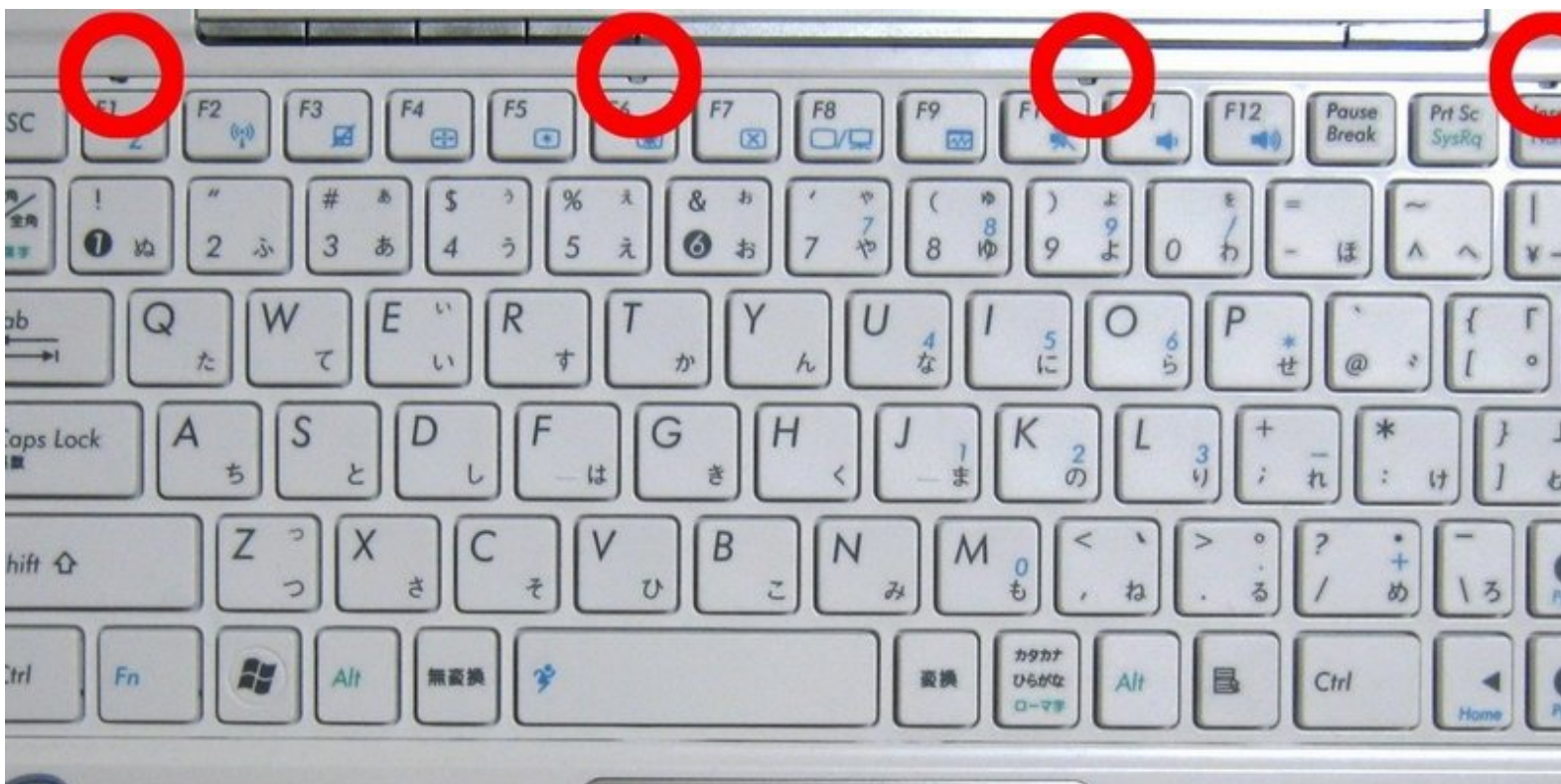


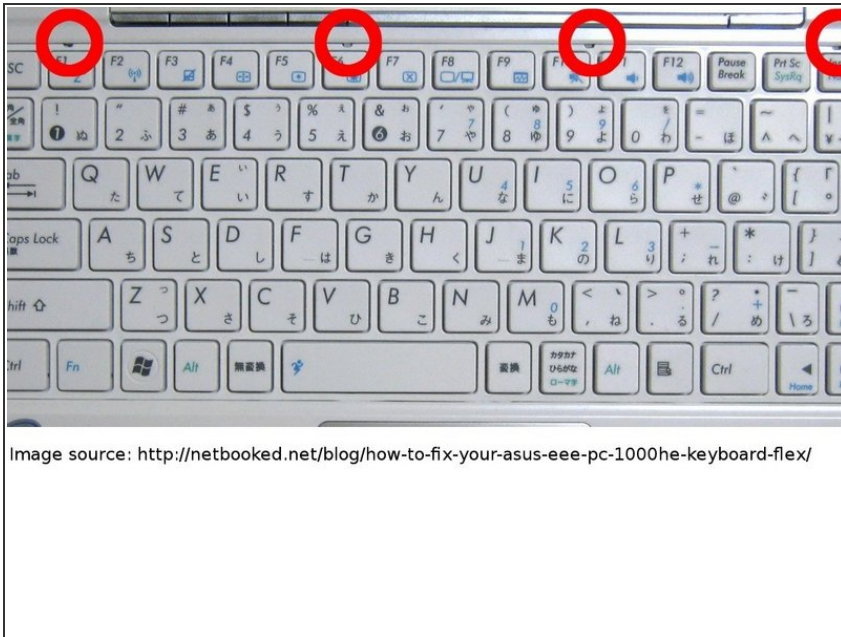
Image source: <http://netbooked.net/blog/how-to-fix-your-asus-eee-pc-1000he-keyboard-flex/>



## PARTS:

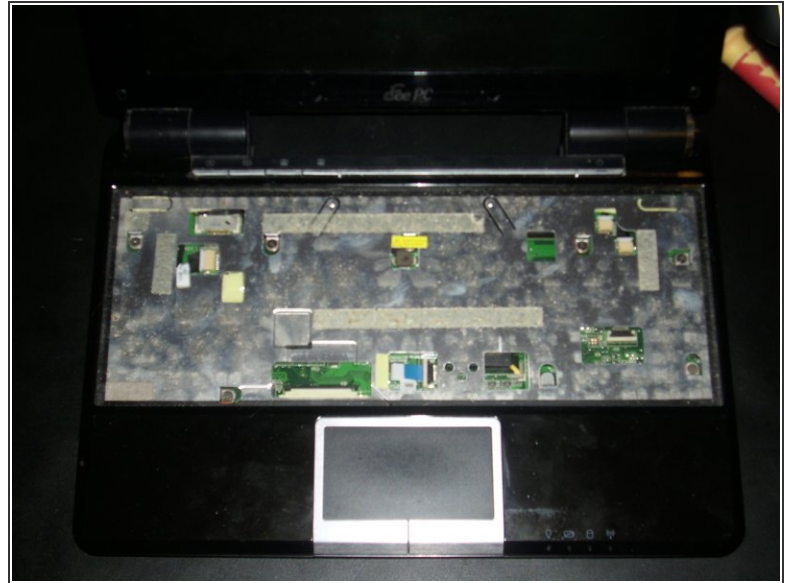
- [Double-sided thermal tape](#) (1)
-

## Step 1 — Lower Assembly



- Turn off the power and remove the battery before working on your Eee PC
- Start by removing the keyboard
  - There are four latches on the top of the keyboard, use a paper clip or other object to disengage the latches
  - You may have to pull the keyboard up enough with the object - there is no spring mechanism to pop the keyboard out. One trick is after lifting it enough, to slide it (not too much) upward to remove the bottom side.
  - The keyboard assembly has also two plastic retention points on the sides, and some thermal tape sticking the keyboard down.
- ⚠ Caution: the keyboard has a ribbon connector underneath it which must be carefully unplugged before fully removing the keyboard.

## Step 2



- 7 screws hold the front plate to the motherboard, as well as the ones on the rear of the PC.
- Before taking off the case, you need to disconnect the touchpad and hotkeys cables.

To reassemble your device, follow these instructions in reverse order.

This document was last generated on 2019-08-05 08:07:23 PM.