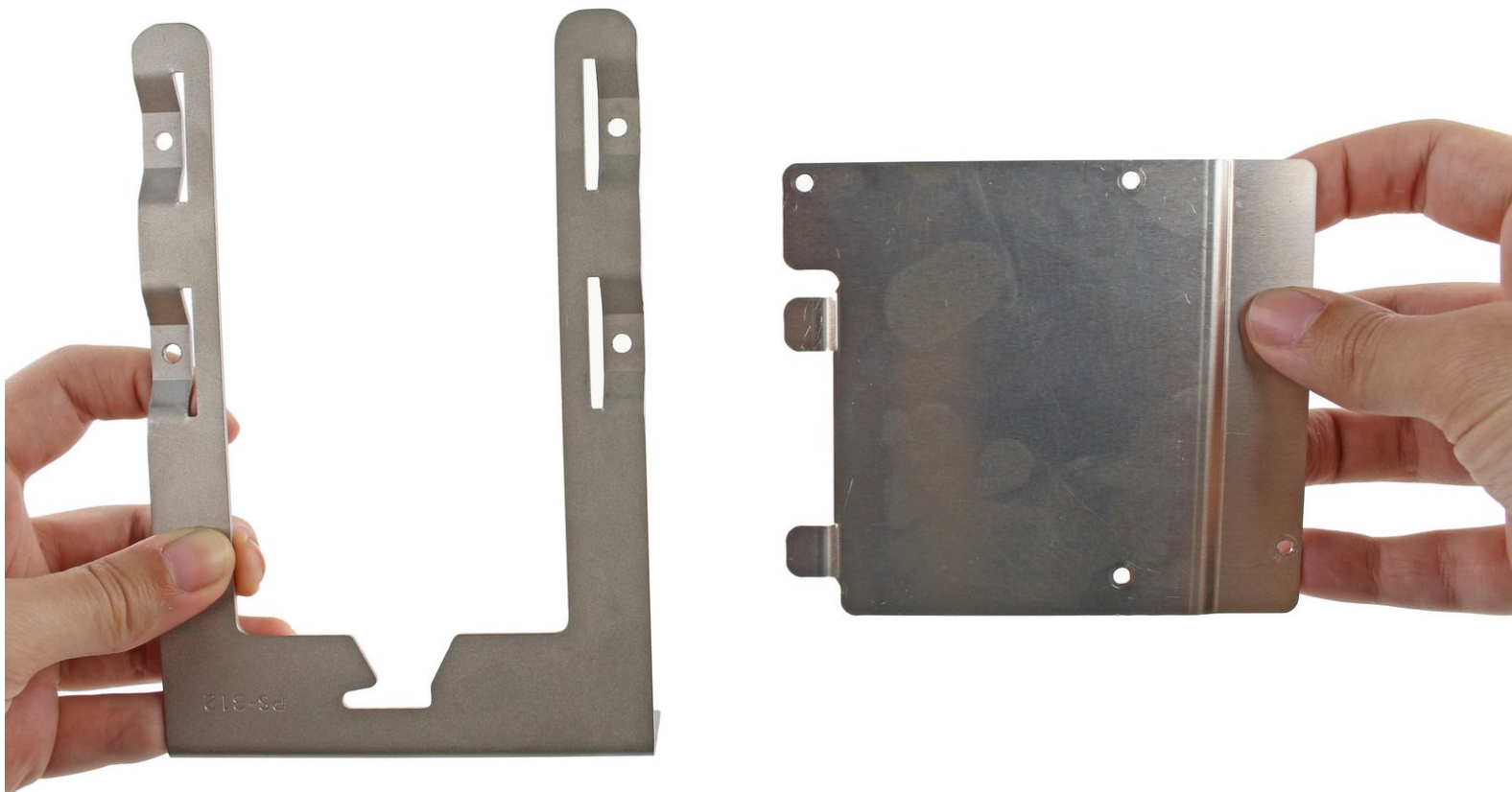




How to Install a Hard Drive Sled Adapter for Mac Pro First Generation

Assembly instructions for a Mac Pro First Generation Hard Drive Sled Adapter.

Written By: Kristen Gismondi



INTRODUCTION

This guide will walk you through the quick and simple process of assembling a Mac Pro First Generation Hard Drive Sled Adapter. The existing hard drive bay sled brackets in this device are meant to fit 3.5" hard drives, but this adapter enables you to install any SATA 2.5" solid state, hybrid, or standard hard drive. It also correctly aligns the SATA connector to match the socket in your Mac Pro.



TOOLS:

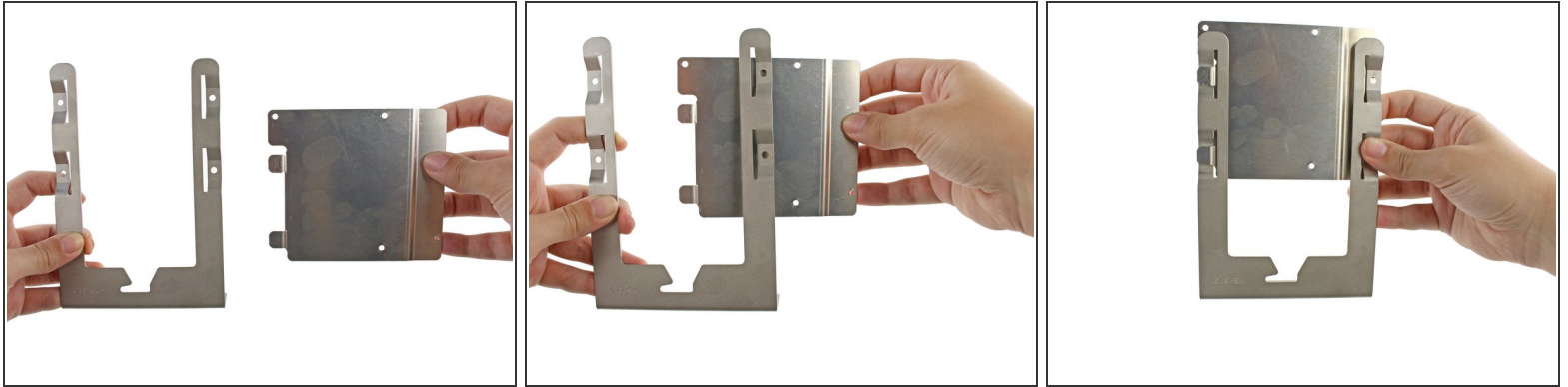
- [Phillips #0 Screwdriver](#) (1)



PARTS:

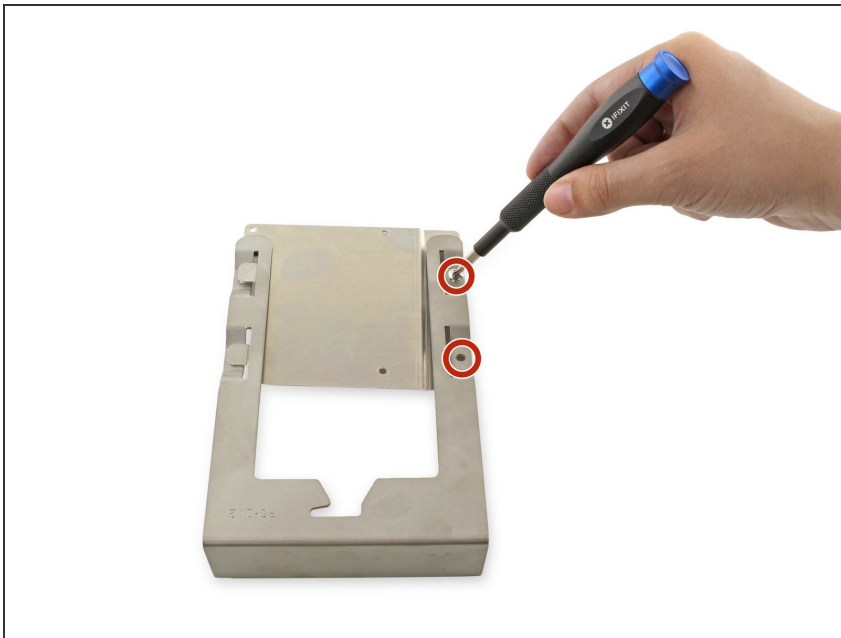
- [Mac Pro \(1st Gen\) Hard Drive Sled Adapter](#) (1)

Step 1 — How to Install a Hard Drive Sled Adapter for Mac Pro First Generation



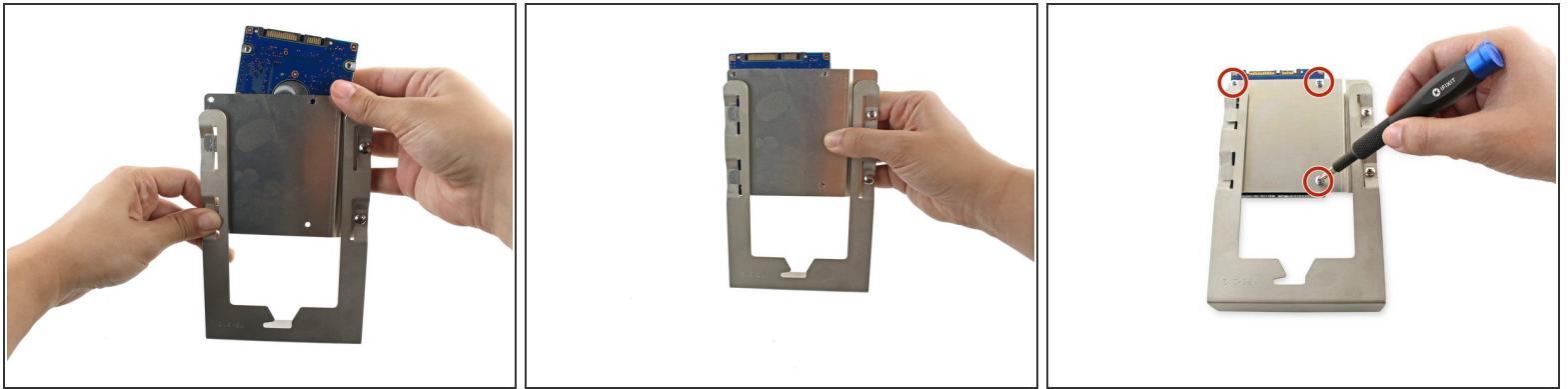
- Insert the two tabs on the left side of the metal adapter bracket into the slots on the left side of the hard drive bay sled.
- Align the holes on the right side.

Step 2



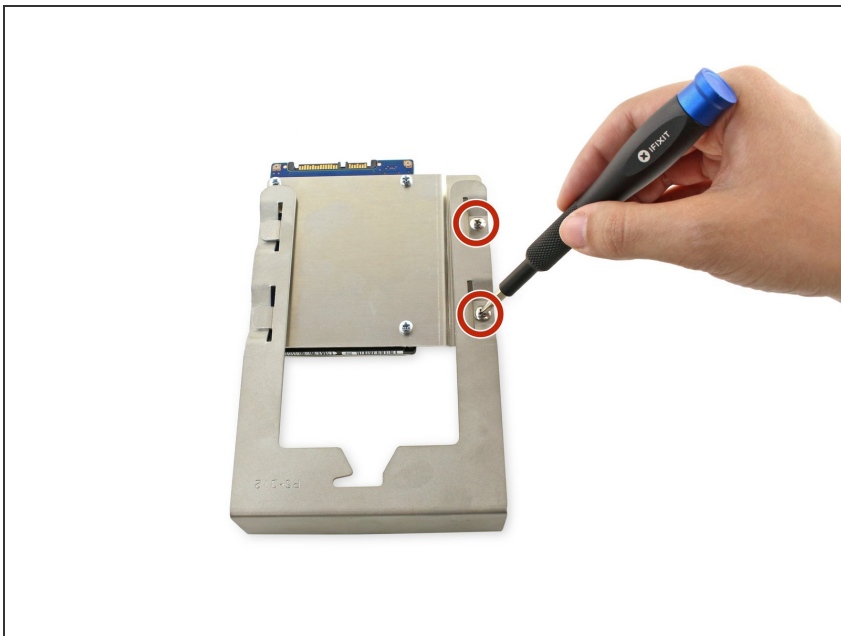
- Screw the two 7.8mm PH0 screws into the two holes on the right.
- ⓘ Leave these screws slightly loose; they will be tightened once the hard drive is attached.

Step 3



- Align the holes in the hard drive with the three holes on the bracket.
- Screw the three 6.1mm PH0 screws into the bracket and hard drive.
- ⓘ These screws can be secured tightly.

Step 4



- Tighten the two 7.8mm PH0 screws on the right side of the bracket.