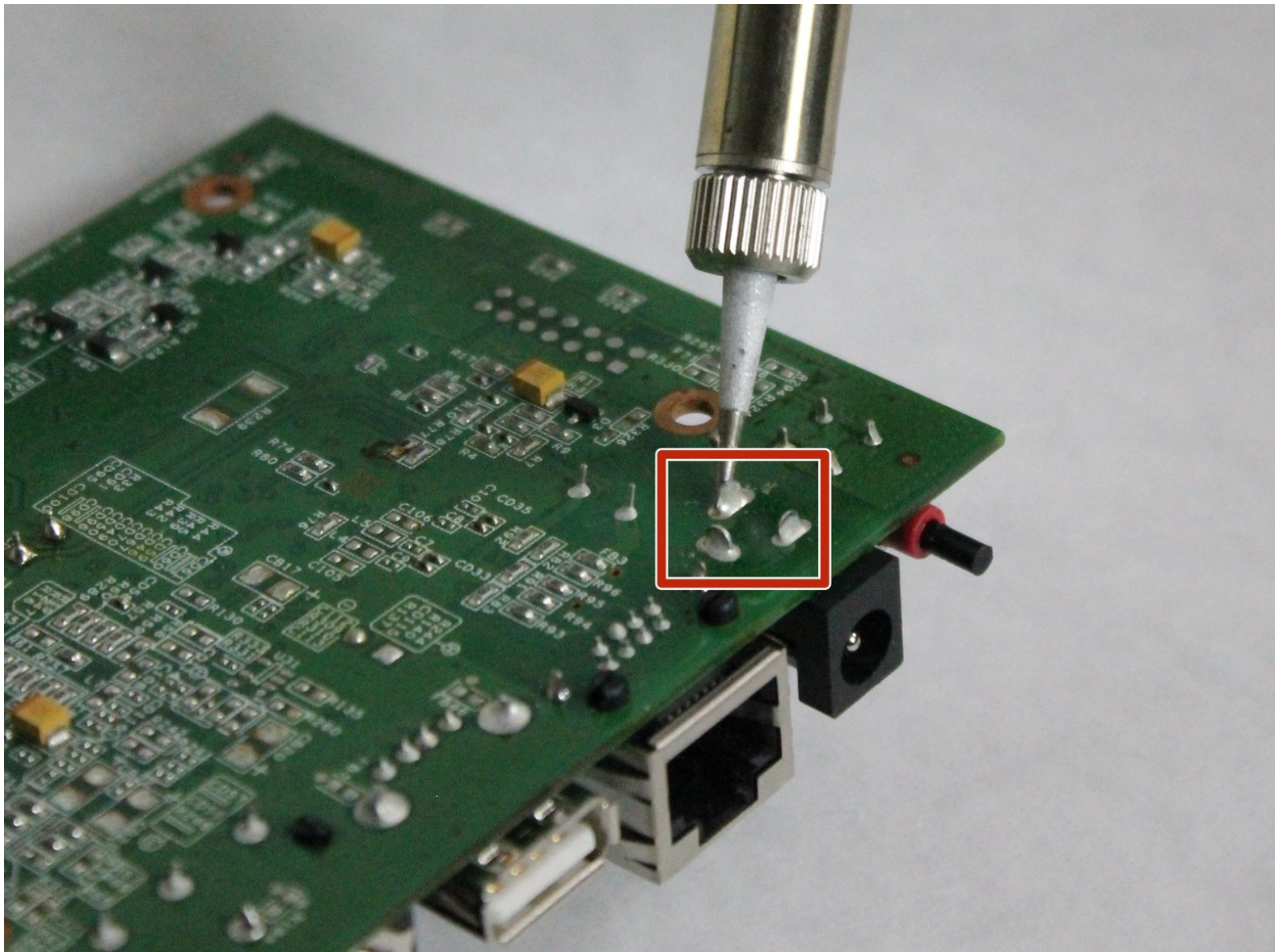




# Slingbox SOLO DC Power Connector Replacement

Replace the faulty DC Power Connector to bring power back to the Slingbox.

Written By: Nitin Muralidhar



## INTRODUCTION

The purpose of this guide is to show the steps necessary to replace the faulty DC power connector.

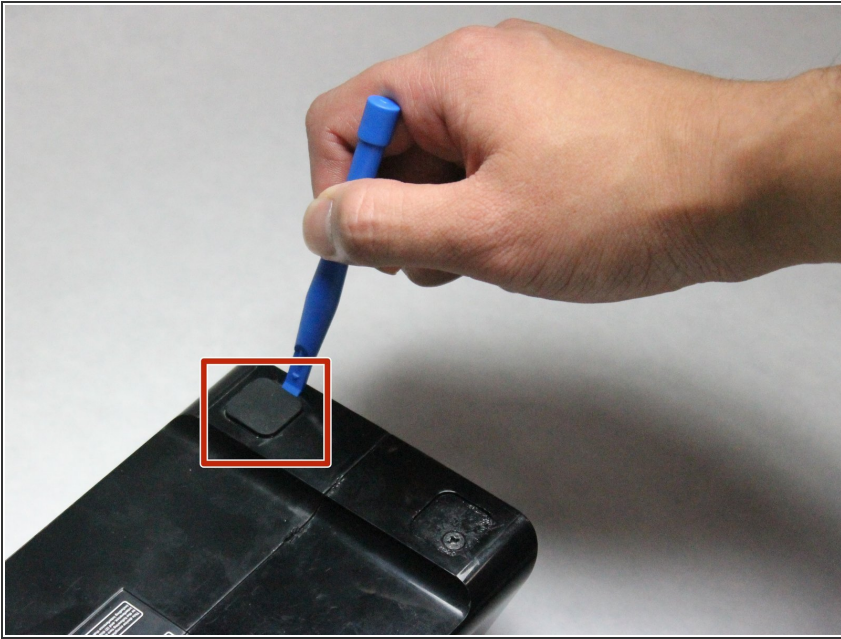
### TOOLS:

- [iFixit Opening Tools](#) (1)
- [Phillips #1 Screwdriver](#) (1)
- [Soldering Iron](#) (1)

### PARTS:

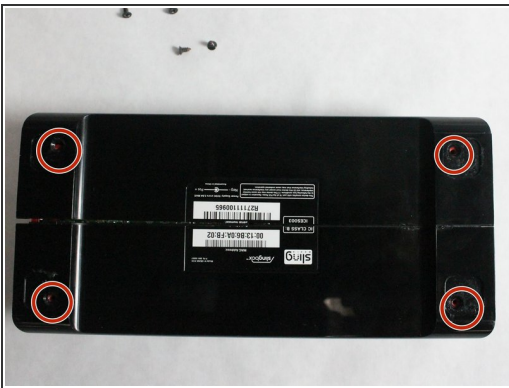
- [DC Power Connector Part# CP-102BH-ND](#) (1)

## Step 1 — Motherboard



- Use the plastic opening tool to remove the four rubber pads from the bottom of the device.

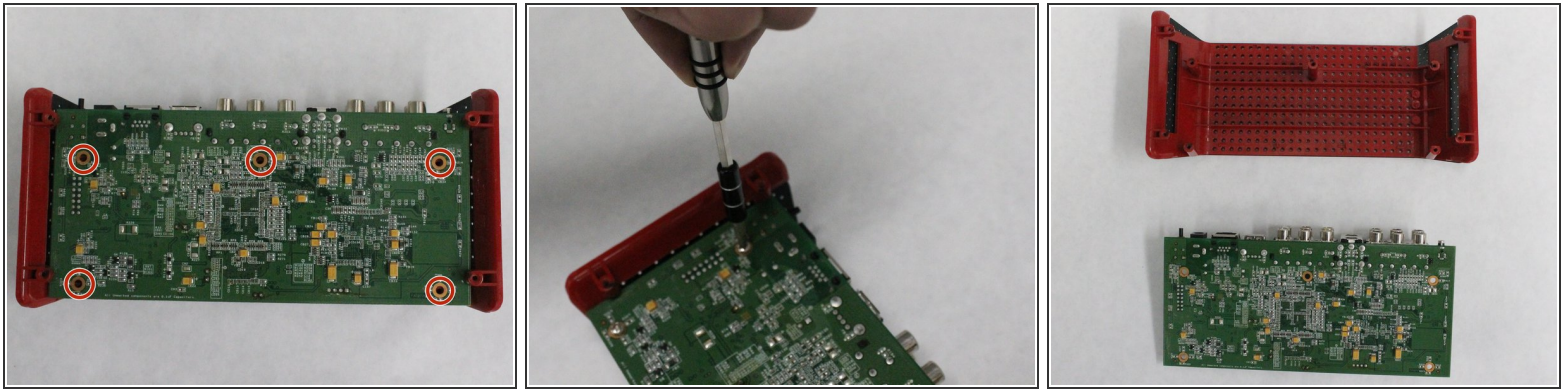
## Step 2



- ⓘ The Slingbox has four black 5mm screws, one on each corner of the case.
- Remove the four black 5mm screws using the PH1 screwdriver.
- Gently pull and separate the two case covers.

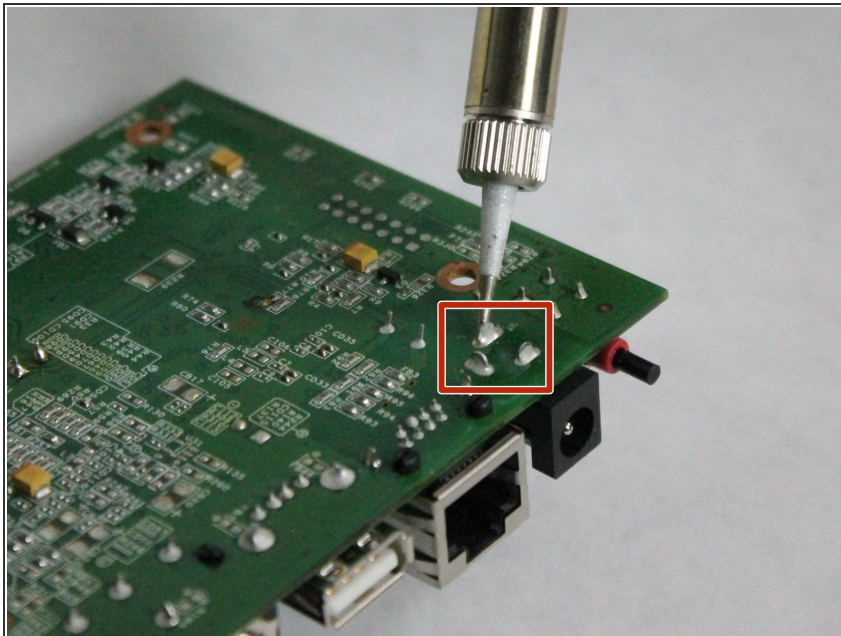


### Step 3



- i The motherboard has five silver 5.5mm screws connecting it to the base of the Slingbox.
  - Remove the five silver screws on the motherboard using the PH1 screwdriver.
  - Gently slide and separate the motherboard from the base.

### Step 4 — DC Power Connector



- ! Do not touch the heated tip of the soldering iron.
  - i Check [this](#) guide out to learn how to use a soldering iron.
    - Desolder all three lead prongs.
    - Gently pull the DC power connector from the motherboard.

To reassemble your device, follow the instructions in reverse order.