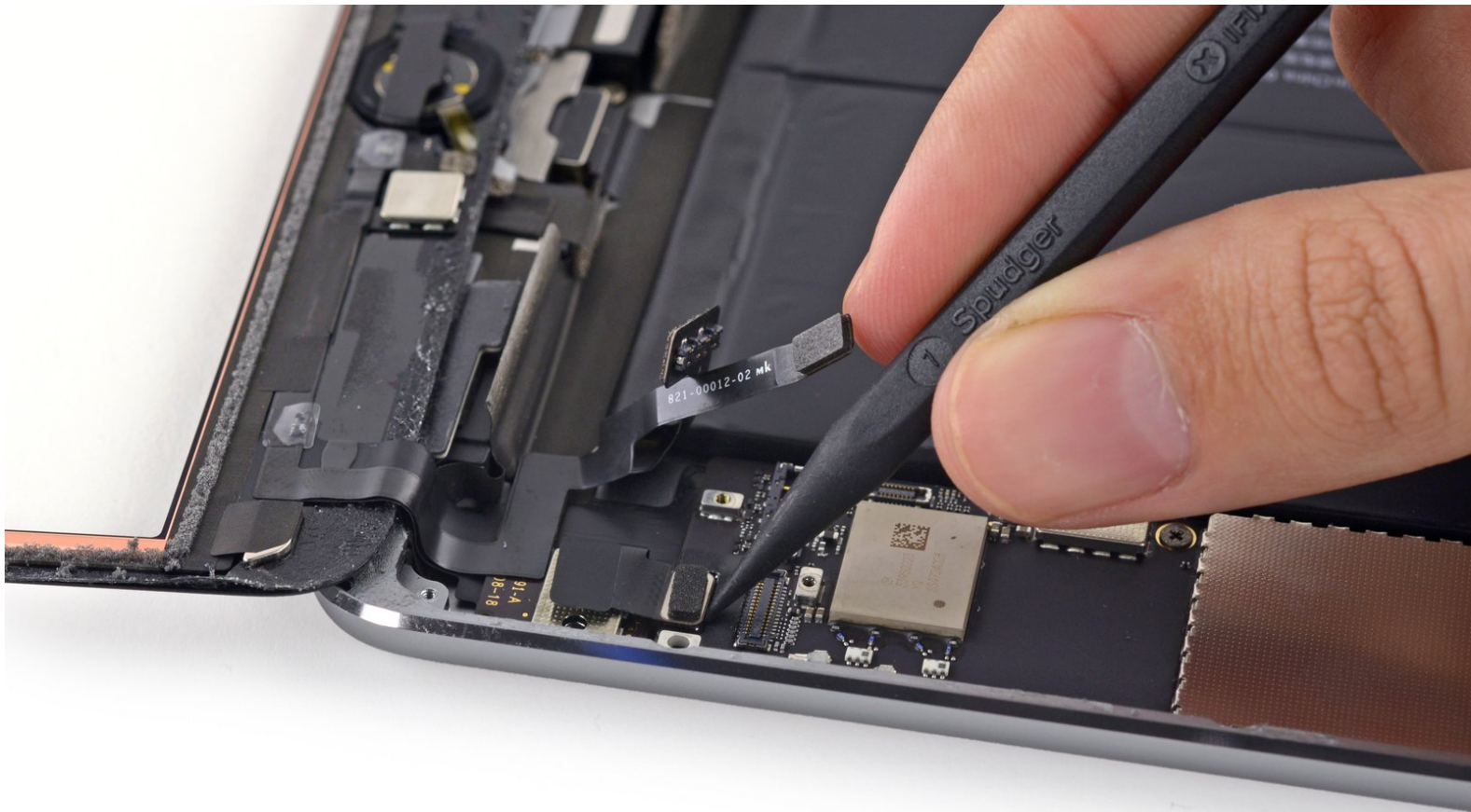




iPad Mini 3 Wi-Fi Front Panel Assembly Replacement

Prereq only for replacing the front panel assembly in an iPad Mini 3

Written By: Evan Noronha



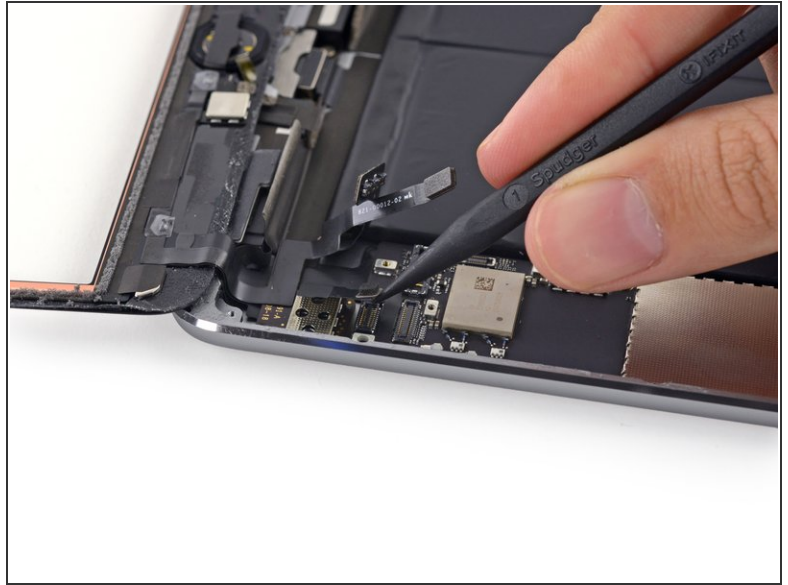
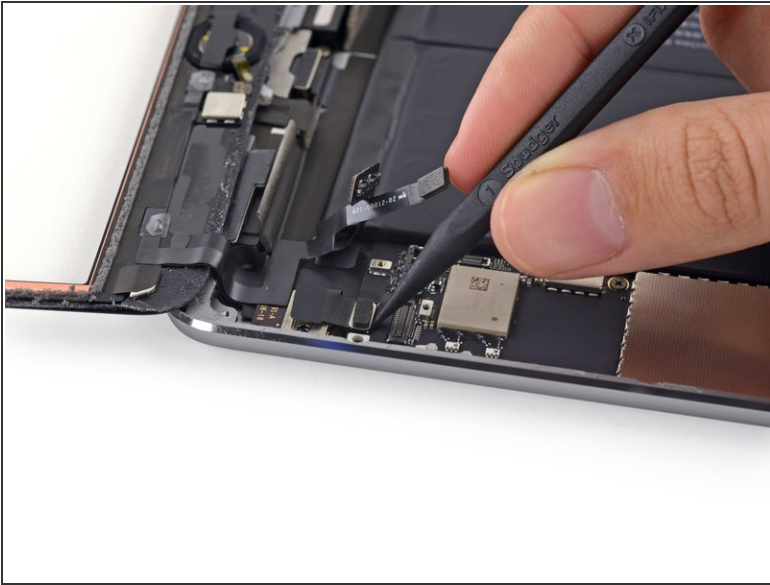
INTRODUCTION

Prerequisite only guide for removing the front panel assembly from an iPad Mini 3.

TOOLS:

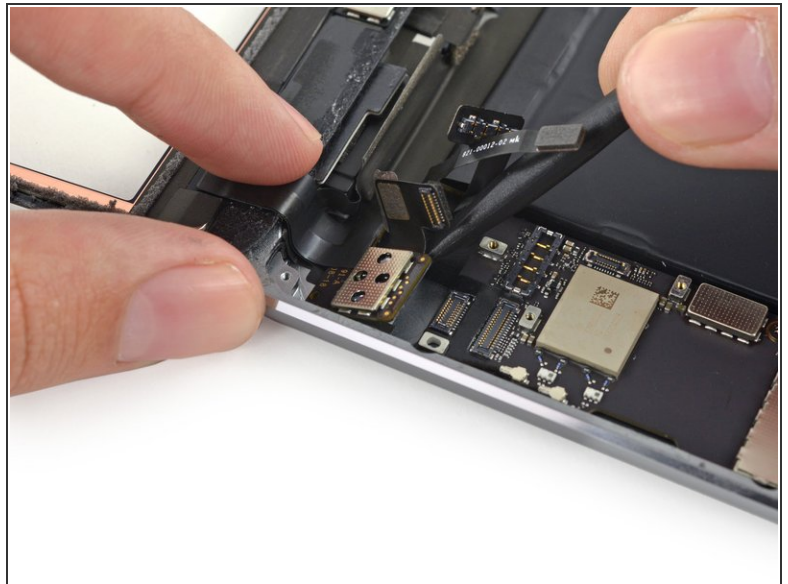
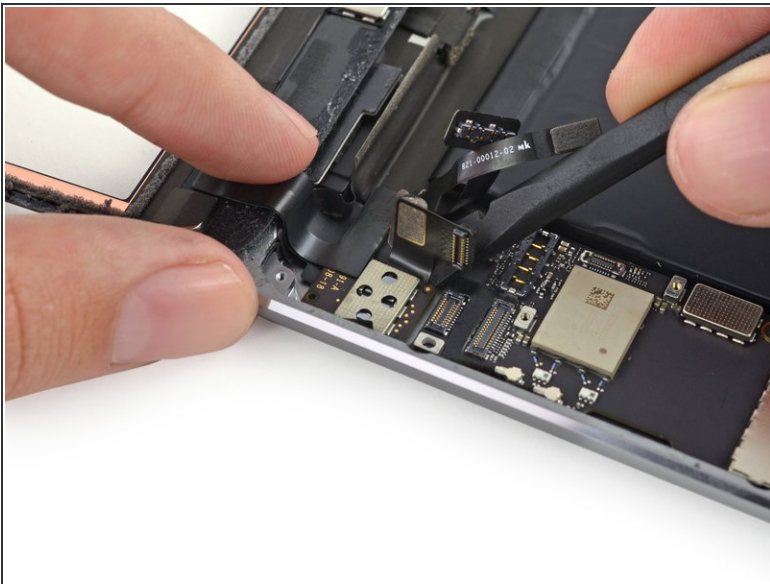
- [Spudger](#) (1)
-

Step 1 — Front Panel Assembly



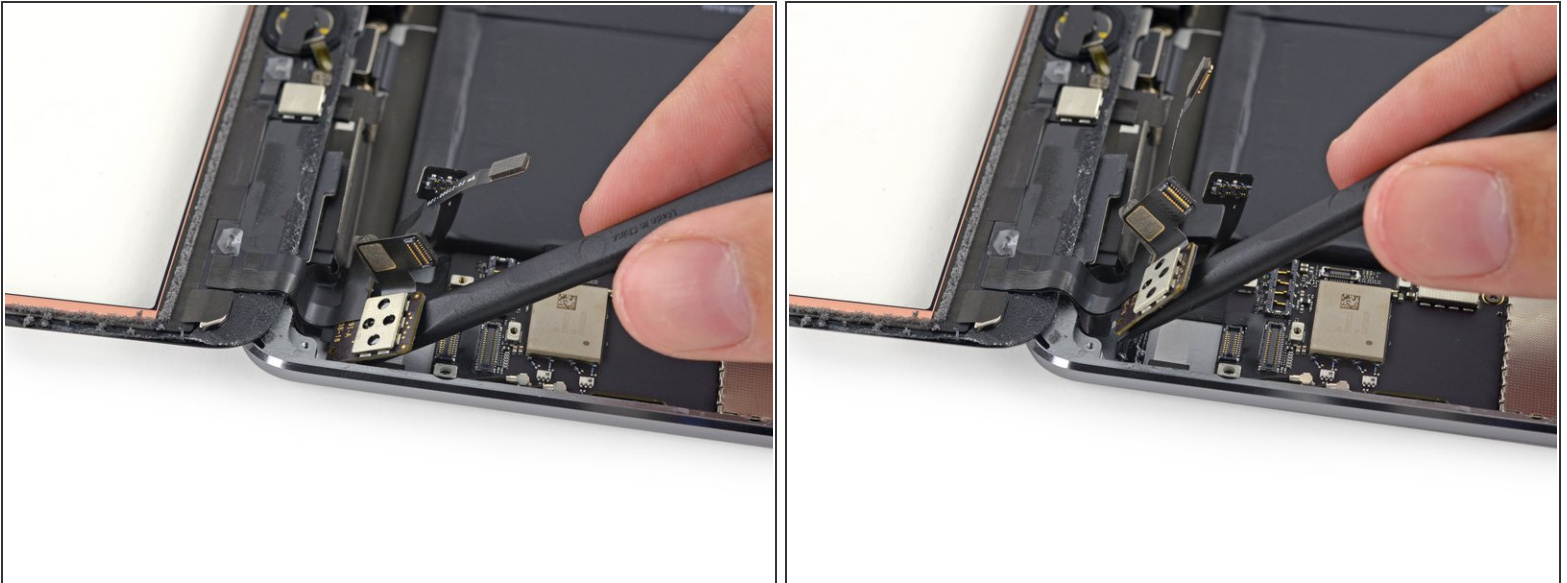
- Use the tip of a spudger to lift the digitizer cable connector straight up off of its socket.

Step 2



- Slide the flat end of a spudger under the battery side of the digitizer board to begin separating it from the rear case.

Step 3



- Lift the digitizer board up to free the last of the adhesive.

Step 4



- Lift and remove the front panel assembly from the iPad.

To reassemble your device, follow these instructions in reverse order.