



# InFocus Remote Button Pad Replacement

Replace the button pad on your InFocus Remote

Written By: Paige Reisman



---

## INTRODUCTION

Use this guide to replace broken, torn or ugly buttons on your InFocus Remote.

---

### TOOLS:

- [iFixit Opening Tools](#) (1)
  - [iFixit Opening Picks set of 6](#) (1)
-

## Step 1 — Front Cover



- Use your finger to press the tab on the battery cover.
- Lift the cover up and out.

## Step 2



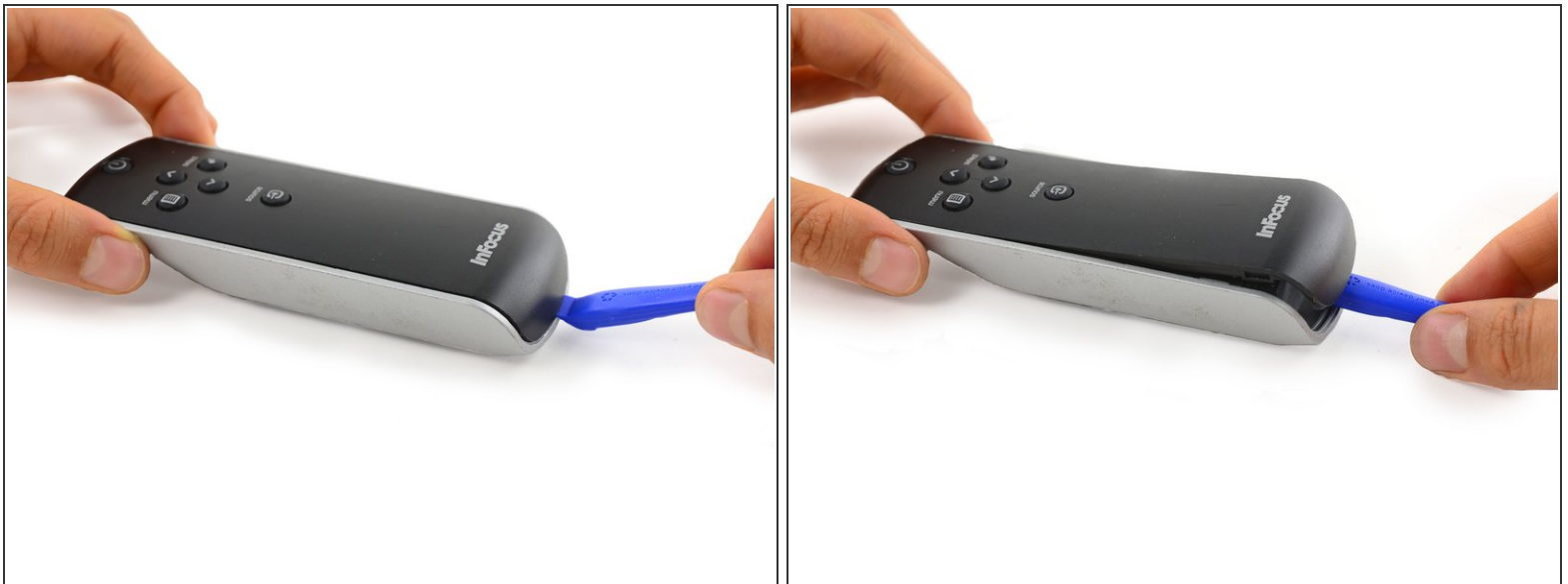
- Use your finger to lift the two AA batteries up and out of the remote.

### Step 3



- Remove the three 9mm Phillips #00 screws located on the backside of the remote.

### Step 4



- Insert a plastic opening tool into the seam between the black top cover and silver base at the bottom edge of the remote.
- Carefully pry the top cover up and away from the base.

## Step 5



- Insert an opening pick into the seam on side of the remote, even with the InFocus Label.
- Slide the opening pick along the side of the remote, moving towards the buttons.
- ⓘ There is a plastic tab that holds the covers to the base, located even with the Source button. Push the pick through with a bit more force here to disconnect the cover.

## Step 6



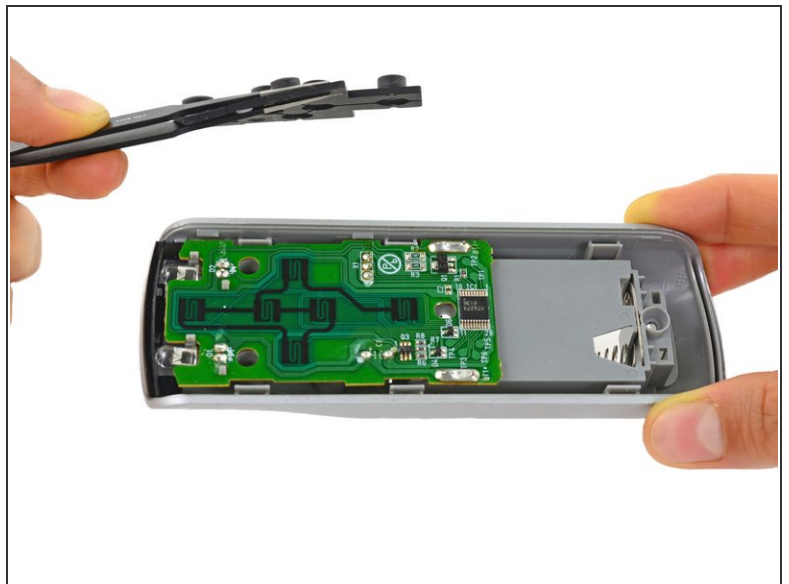
- Repeat the previous step on the other side of the remote, working from the InFocus label towards the buttons until the entire cover is loose.

## Step 7



- Firmly grasp the cover and lift it away from the remote.

## Step 8 — Button Pad



- Lift the button pad up and out of the remote.

To reassemble your device, follow these instructions in reverse order.