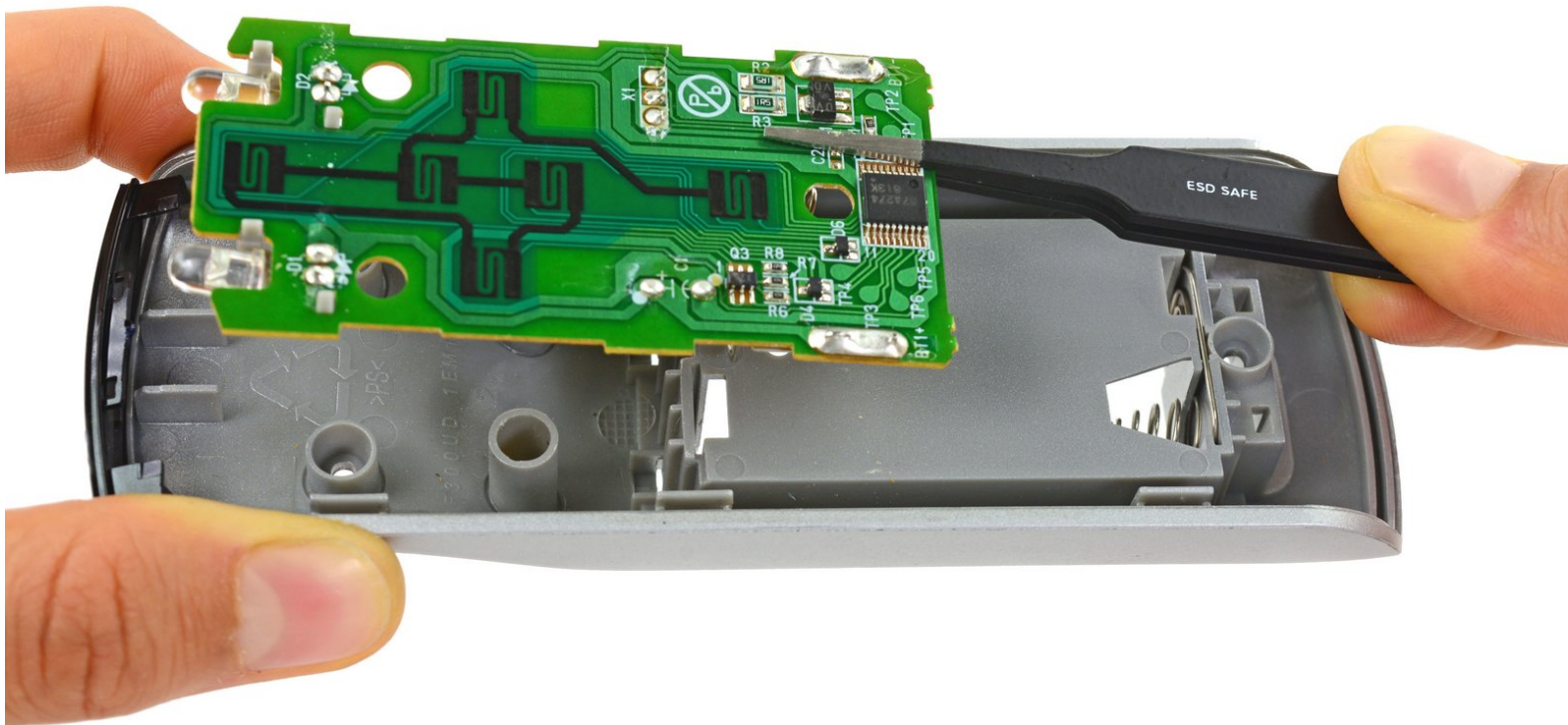




# InFocus Remote Motherboard Replacement

Replace the motherboard in your InFocus Remote.

Written By: Paige Reisman



---

## INTRODUCTION

Use this guide to remove and fix and/or replace the Motherboard on your InFocus Remote.

---

### TOOLS:

- [iFixit Opening Tools](#) (1)
  - [iFixit Opening Picks set of 6](#) (1)
-

## Step 1 — Front Cover



- Use your finger to press the tab on the battery cover.
- Lift the cover up and out.

## Step 2



- Use your finger to lift the two AA batteries up and out of the remote.

### Step 3



- Remove the three 9mm Phillips #00 screws located on the backside of the remote.

### Step 4



- Insert a plastic opening tool into the seam between the black top cover and silver base at the bottom edge of the remote.
- Carefully pry the top cover up and away from the base.

## Step 5



- Insert an opening pick into the seam on side of the remote, even with the InFocus Label.
- Slide the opening pick along the side of the remote, moving towards the buttons.
- ⓘ There is a plastic tab that holds the covers to the base, located even with the Source button. Push the pick through with a bit more force here to disconnect the cover.

## Step 6



- Repeat the previous step on the other side of the remote, working from the InFocus label towards the buttons until the entire cover is loose.

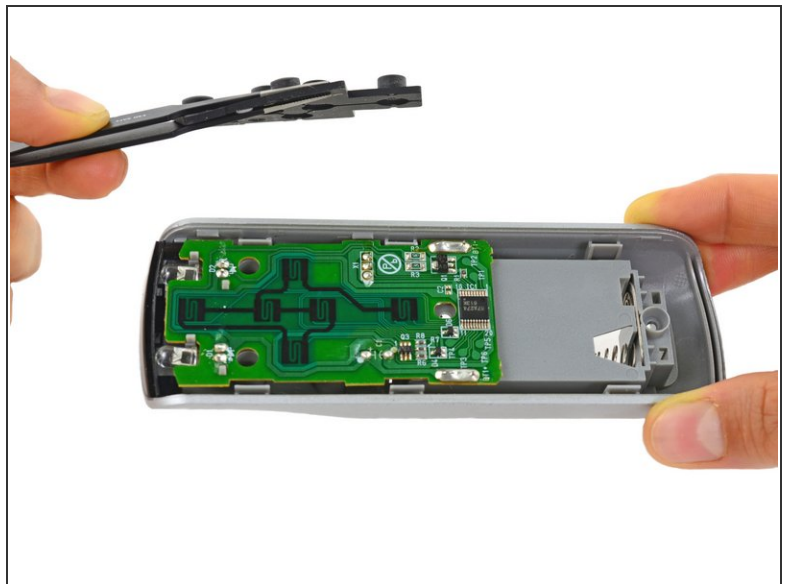


## Step 7



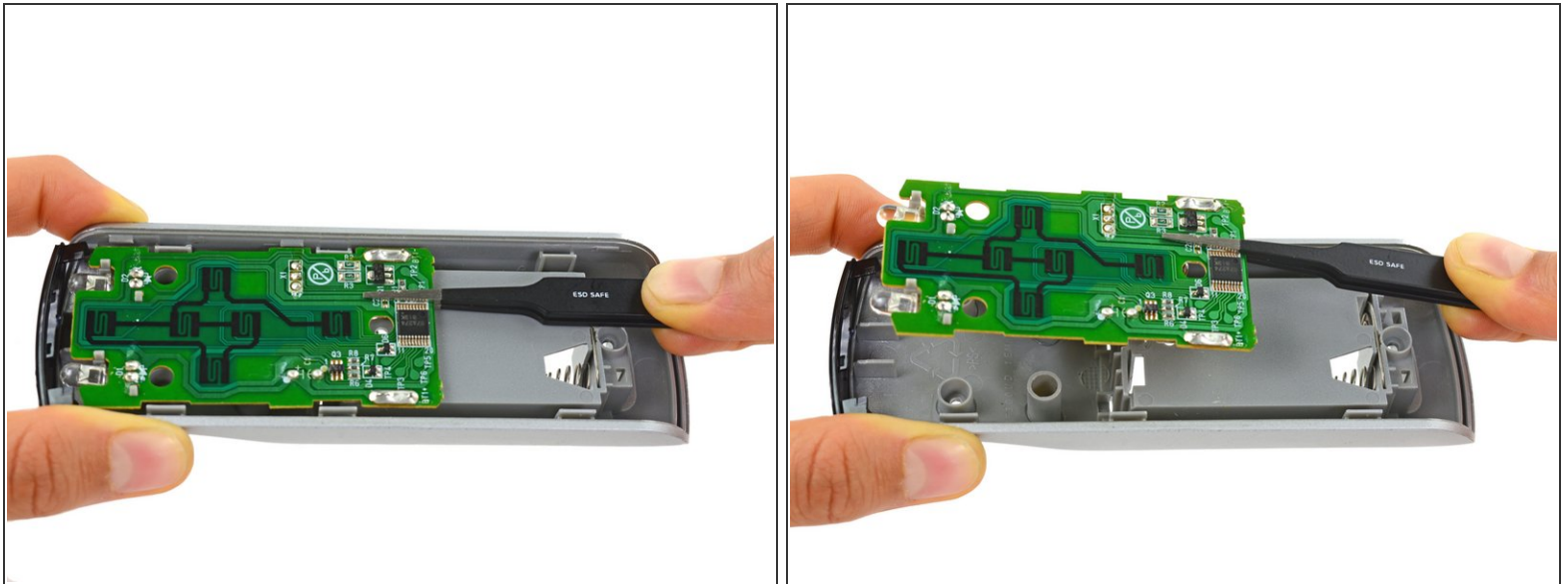
- Firmly grasp the cover and lift it away from the remote.

## Step 8 — Button Pad



- Lift the button pad up and out of the remote.

## Step 9 — Motherboard



- Lift the motherboard up and out of the silver base.
- ⓘ There are two springs attached to the bottom of the motherboard that can get stuck in the base. Wiggle the board as you pull it up and out to release it.

To reassemble your device, follow these instructions in reverse order.