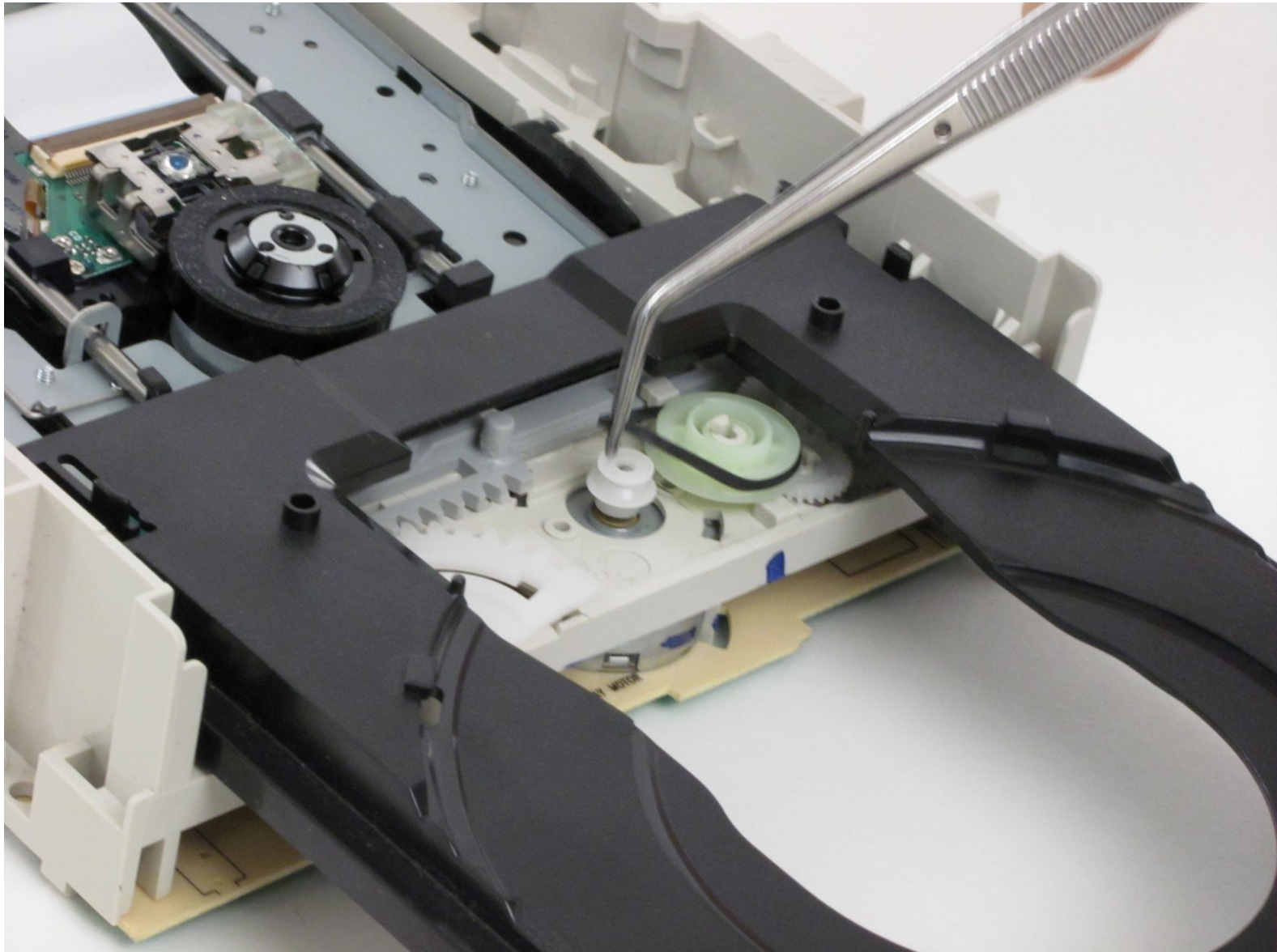




Lite-On LightScribe SHM-165H6S Drive Belt Replacement

Replace drive belt for disc tray.

Written By: James Biggs



INTRODUCTION

If your drive is having problems opening, the drive belt may have broken or fallen out of the track and you will need to replace it.

TOOLS:

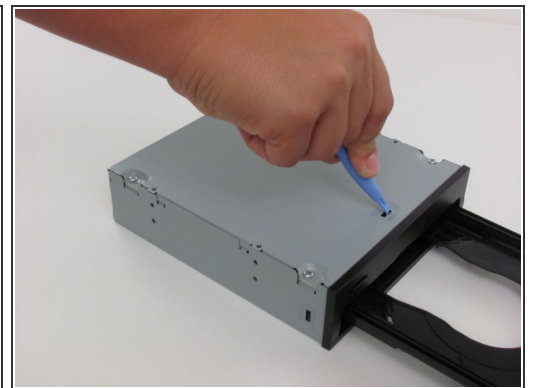
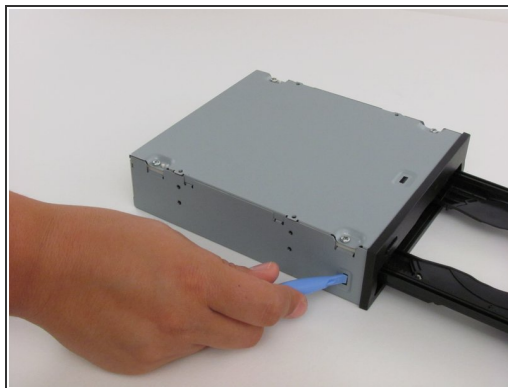
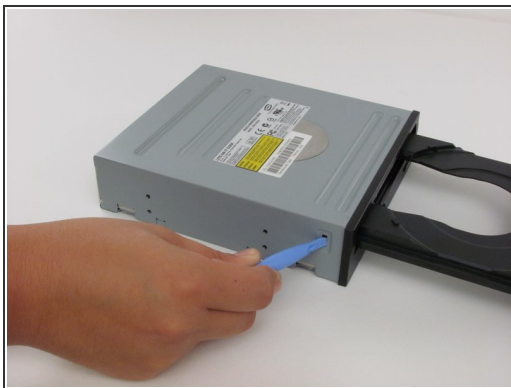
- [Paper Clip](#) (1)
 - [Phillips #2 Screwdriver](#) (1)
 - [iFixit Opening Tools](#) (1)
 - [Tweezers](#) (1)
-

Step 1 — Chassis



- Insert an open paper clip into the small hole on the left side of the faceplate.
- After the tray opens, extend it fully.

Step 2



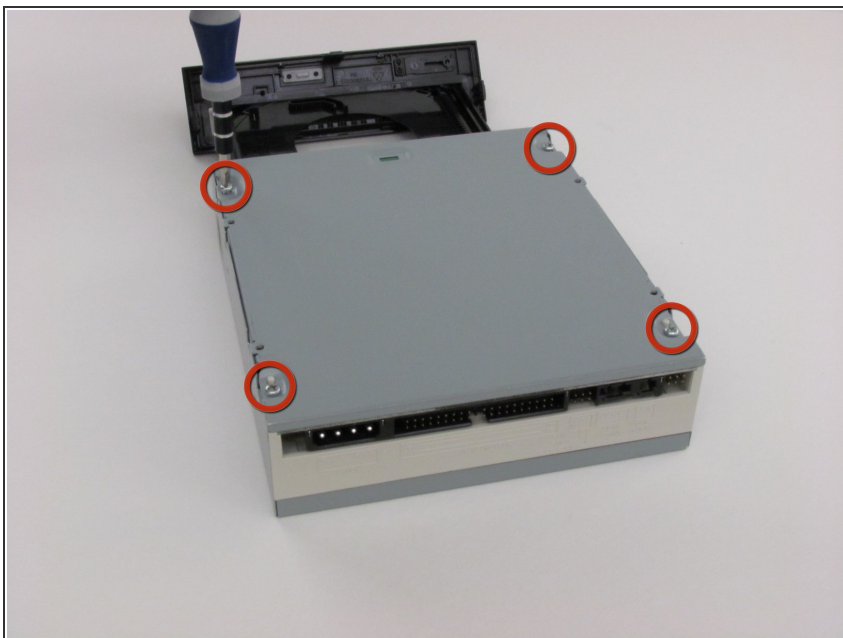
- Use an opening device to push in the black tabs on the left, right and bottom of the outer chassis to unhook the faceplate.

Step 3



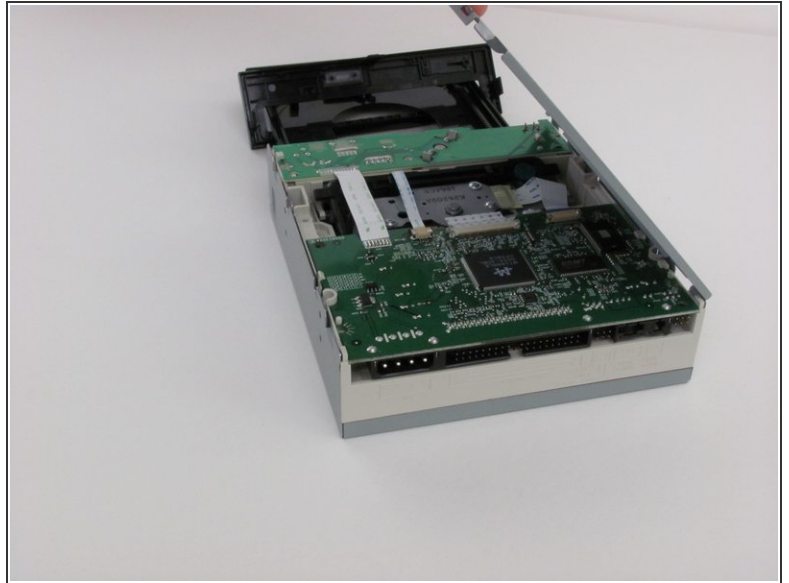
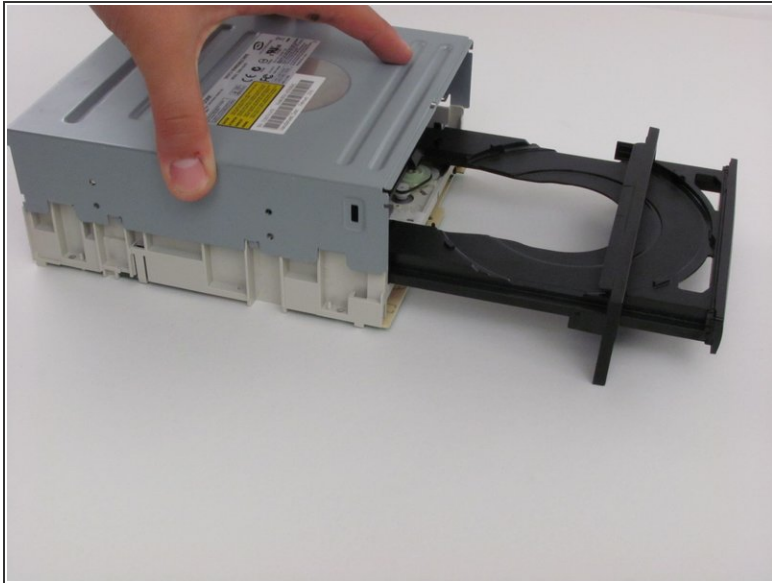
- Pull the faceplate away from the main chassis.

Step 4



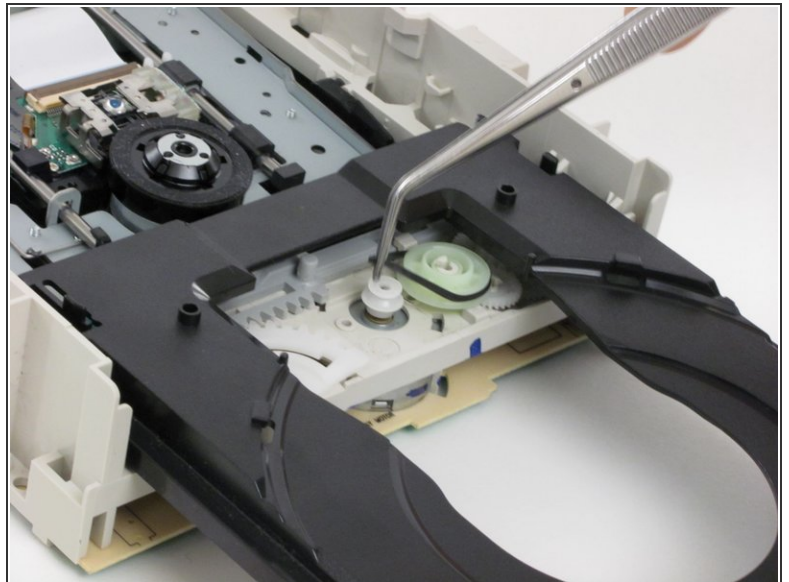
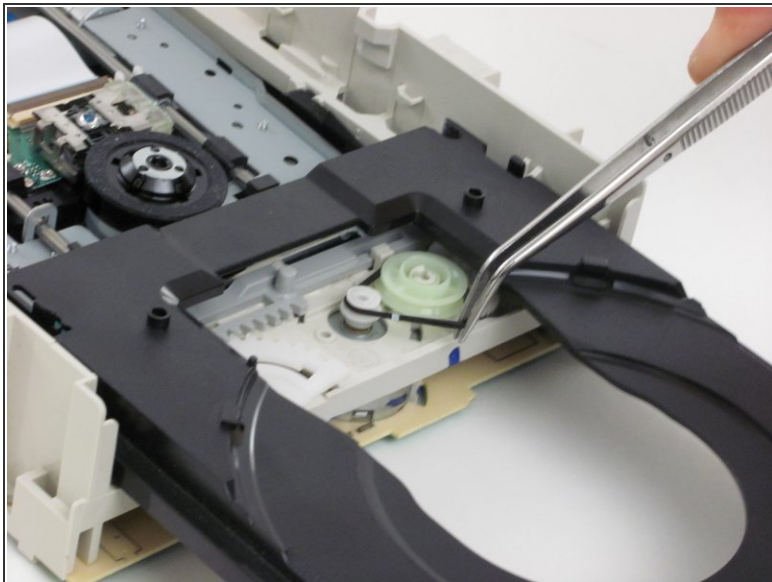
- Unscrew the four 8.5 mm screws on the bottom chassis using a Philips #2 screwdriver.

Step 5



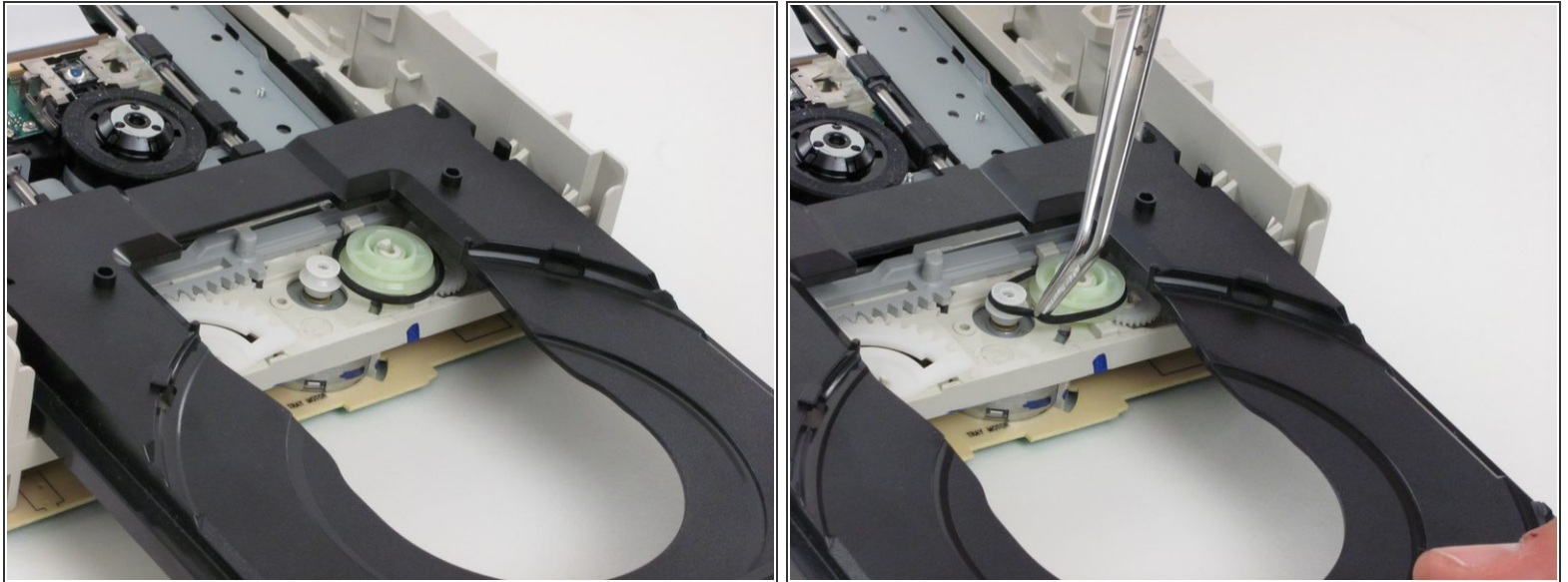
- Lift the top and bottom chassis straight up in order to remove them.

Step 6 — Drive Belt



- Extend the tray so that the belt is accessible.
- Remove the old belt using tweezers.

Step 7



- Carefully replace with the new belt by wrapping it around the larger gear first, followed by the smaller gear.

To reassemble your device, follow these instructions in reverse order.