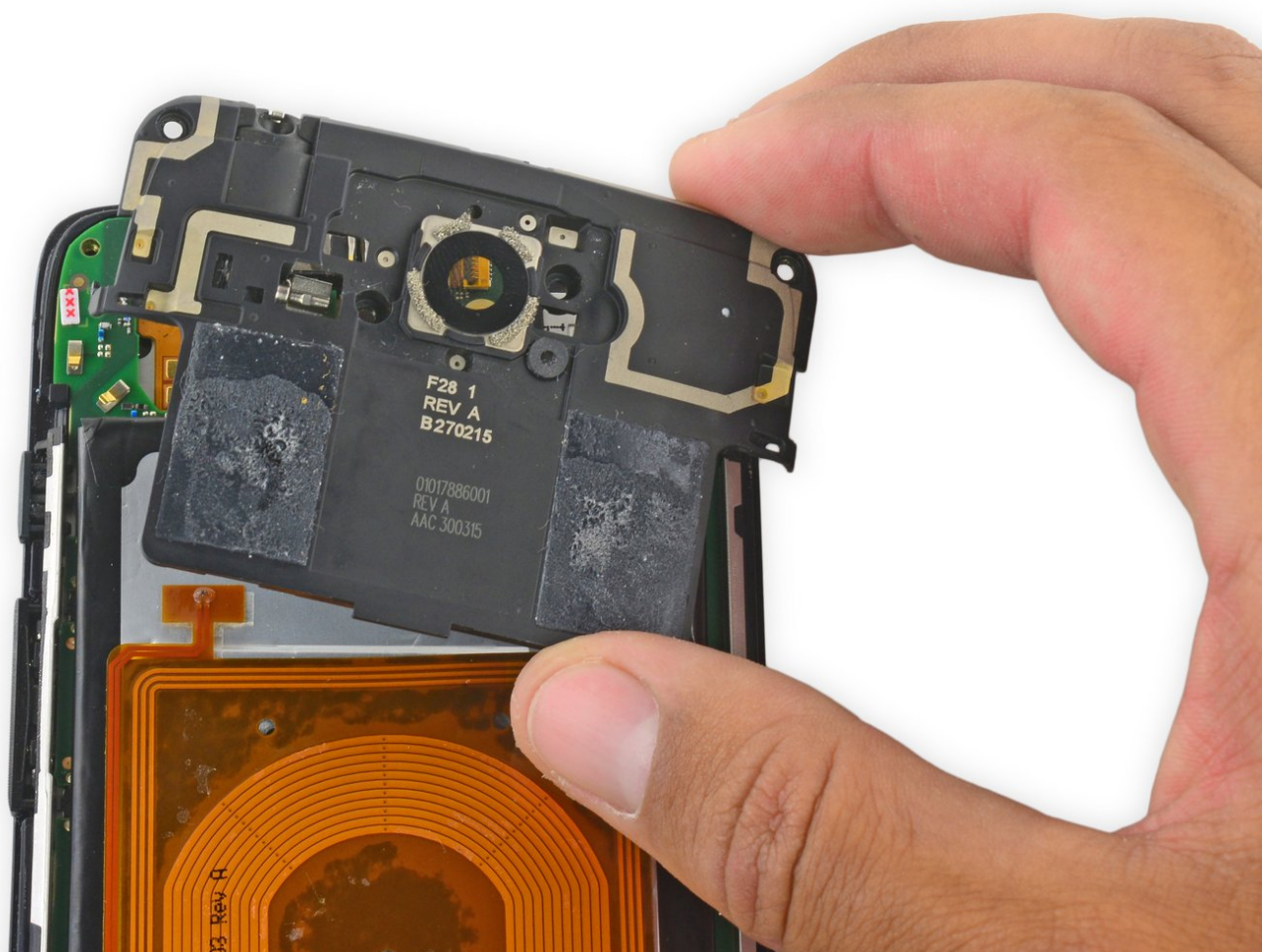




Motorola Droid Turbo Midframe Replacement

Remove the midframe on your Motorola Droid Turbo.

Written By: Geoff Wacker



INTRODUCTION

Use this guide to remove the midframe on your Motorola Droid Turbo.

TOOLS:

- [iFixit Opening Tools](#) (1)
 - [iOpener](#) (1)
 - [T5 Torx Screwdriver](#) (1)
-

Step 1 — Rear Case



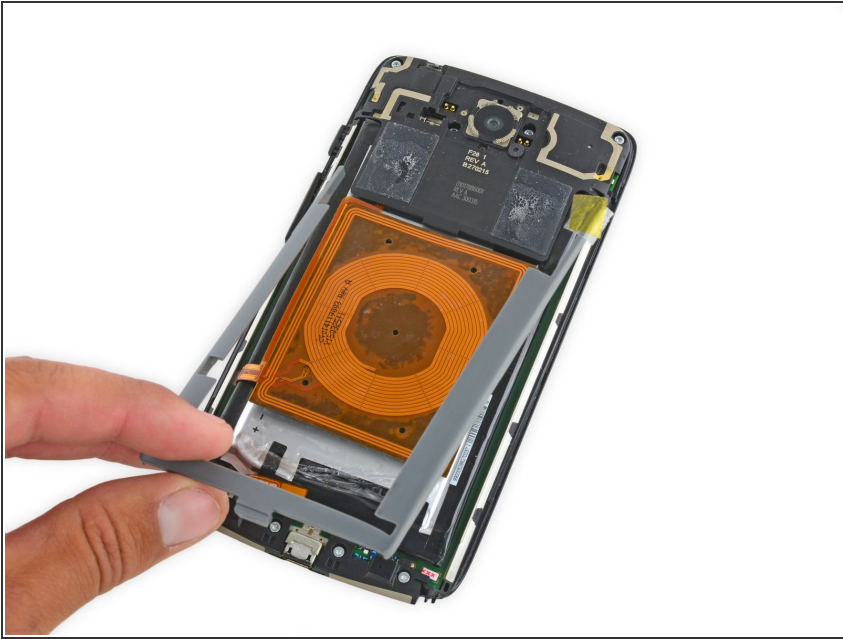
- [Prepare an iOpener](#) and lay it over the rear case to soften the adhesive on securing the rear case to the phone.

Step 2



- Use a plastic opening tool to pry the rear case off of the rest of the device.
- Remove the rear case.
 - ⓘ The wireless charging coil may try to stick to the rear case, so make sure to remove it from the case before fully separating the rear case from the rest of the device.

Step 3 — Midframe



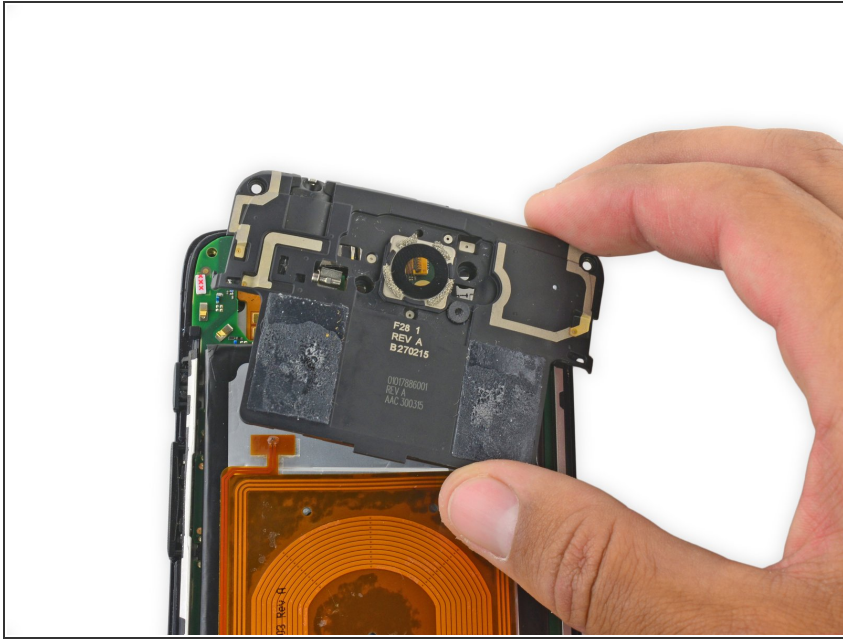
- Remove the midframe bezel.

Step 4



- Remove the four Torx T5 screws securing the midframe plate.

Step 5



- Remove the midframe.

To reassemble your device, follow these instructions in reverse order.