



# iMac G4 15" 700 MHz EMC 1873 AirPort Card Replacement

Replacing or upgrading the AirPort Card in your iMac G4.

Written By: Lilly



---

## INTRODUCTION

This step will help you connect to wireless internet and get you back to surfing the internet faster than before. You can add a AirPort to your computer even if it did not originally come with one.

---

### TOOLS:

- [Phillips #00 Screwdriver](#) (1)
  - [Spudger](#) (1)
-

## Step 1 — Outer Base Plate



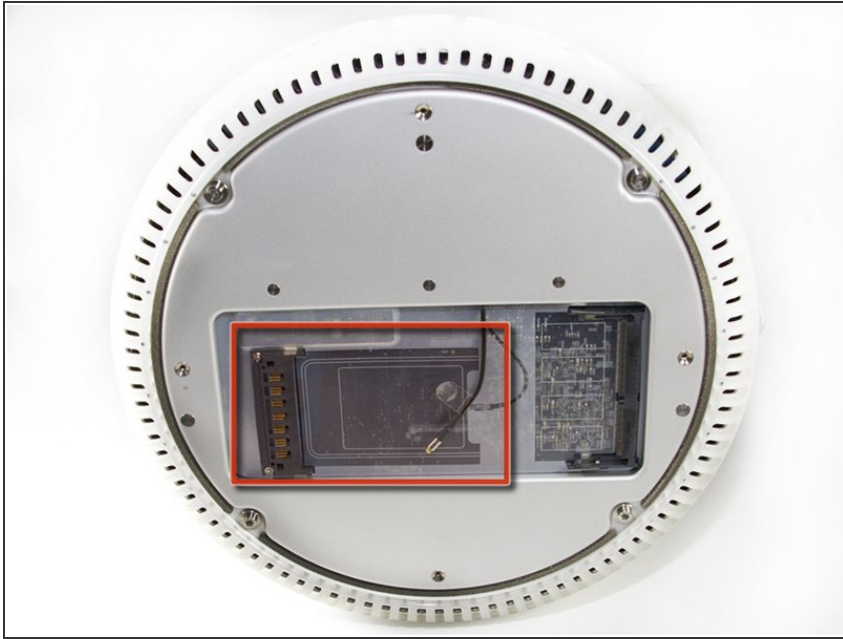
- ⓘ Place the computer monitor face down on a safe, harmless surface.
- Using a Phillips #00 screw driver, remove the four 6.86 mm screws from the metal plate.

## Step 2



- Remove the metal plate from bottom of the iMac G4.
- ⓘ The four screws do not completely separate from the metal plate.

### Step 3 — AirPort Card



- Use a spudger to lift and remove the AirPort's antenna connector.
- ⓘ This step is only applicable to iMacs that came with an AirPort card installed.

To reassemble your device, follow these instructions in reverse order.