



# Disassembling Apple AirPort Extreme Base Station Model A1034

This is a step-by-step guide to disassembly the Apple AirPort Extreme Base Station Model A1034.

Written By: Michael Garcia



## INTRODUCTION

This is the beginning process to remove or replace any functional component in the AirPort.

---

### TOOLS:

- [T7 Torx Screwdriver](#) (1)
  - [Phillips #000 Screwdriver](#) (1)
-

## Step 1 — Disassembling Apple AirPort Extreme Base Station Model A1034



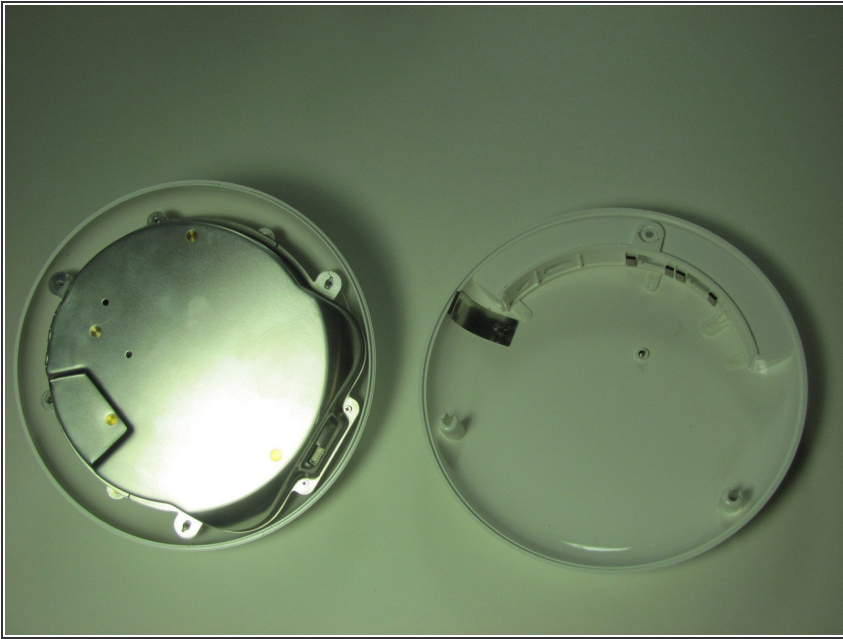
- Remove the three 5mm T7 Torx screws from the back panel.

## Step 2



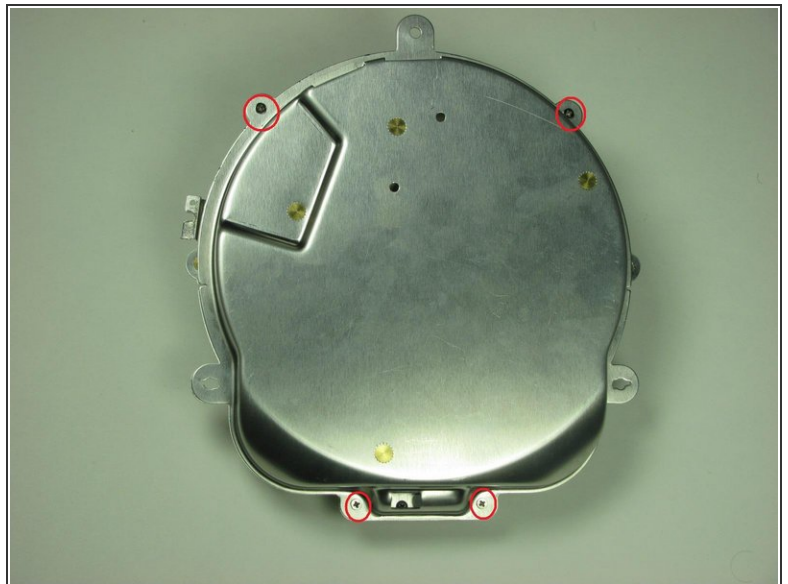
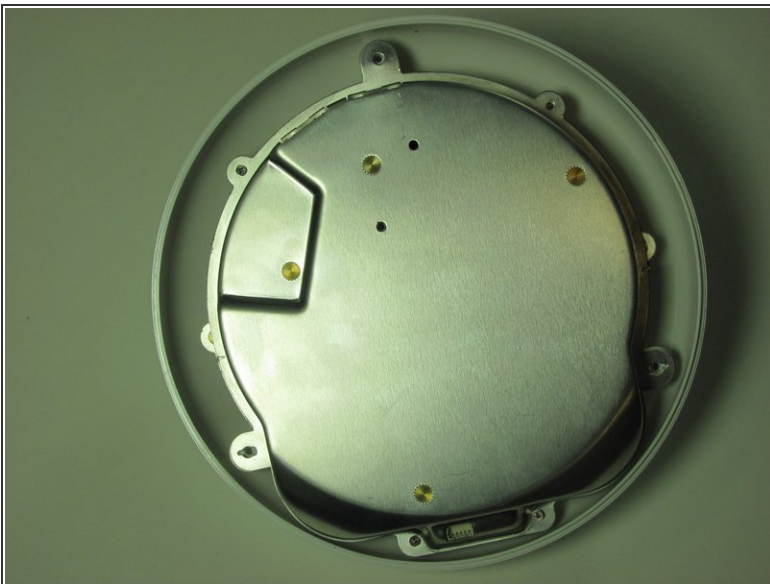
- Remove one 5mm phillips screw located under the identification sticker. You will need to remove the sticker or make a hole to get to the screw.

### Step 3



- Separate the bottom and top casings.

### Step 4



- Remove the metal case from the top case of the AirPort, there are no screws holding it on.
- Remove the four screws from the metal casing.

To reassemble your device, follow these instructions in reverse order.

