



# Sony Ericsson W580i Battery Replacement

Replacing the battery in your phone

Written By: Cherie



---

## INTRODUCTION

Use this guide to easily remove the battery.

---



### PARTS:

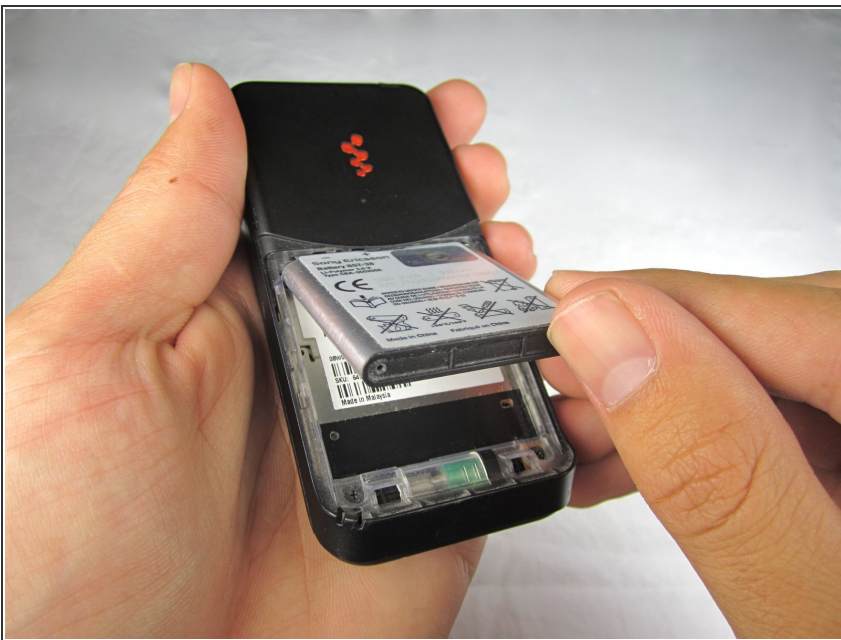
- [Sony Ericsson W580i Battery](#) (1)
-

## Step 1 — Battery



- Hold the phone with the screen facing down. Push the back cover firmly down and slide it towards you.
- The panel will slide down about 2mm.
- Lift the panel away from the phone.

## Step 2



- Lift the battery out from the bottom edge.

To reassemble your device, follow these instructions in reverse order.

