



JBL Charge 2 Teardown

How to quickly disassemble a JBL Charge 2.

Written By: Alexandre Isaac



INTRODUCTION

We will not be tearing the whole thing apart; just the big pieces

[video: https://www.youtube.com/watch?v=oRS8Z_zAb24]

This loudspeaker was tinkered at the charge port (installation of a new one).

TOOLS:

- [Phillips #0 Screwdriver](#) (1)
 - [Spudger](#) (1)
-

Step 1 — Protection Grids



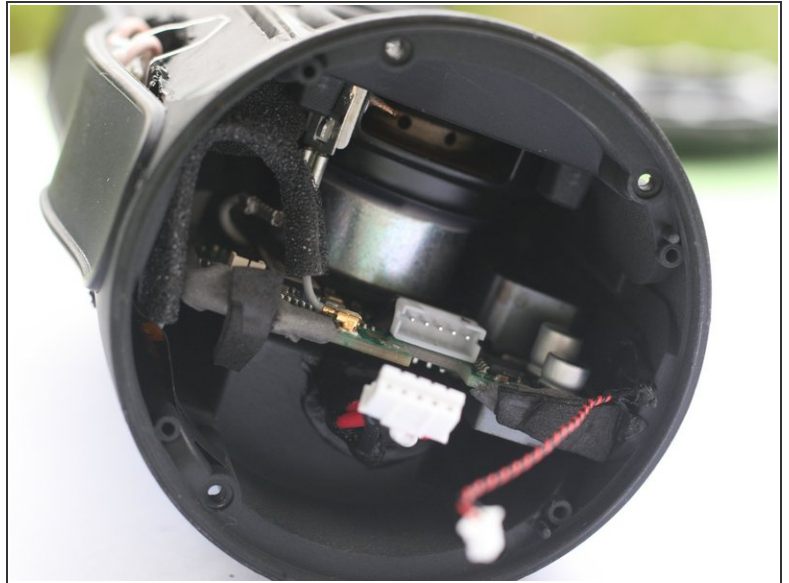
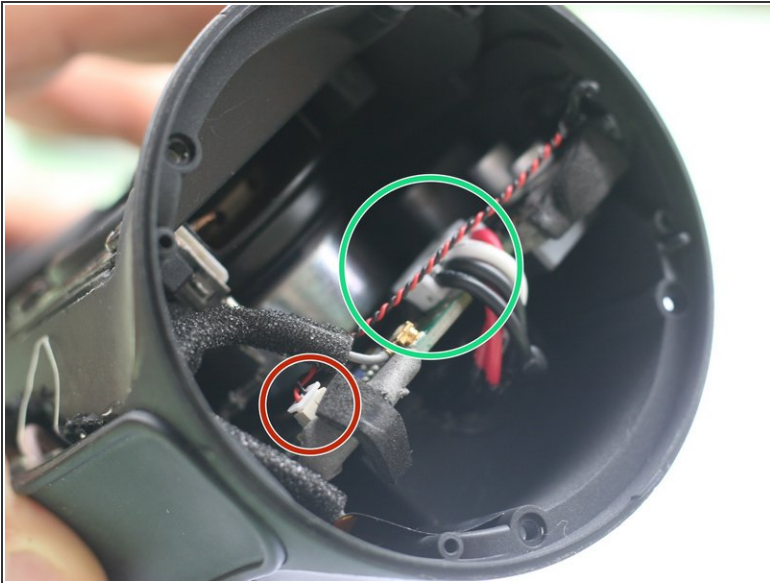
- Use a plastic spatula or credit card to open the grids
- You should not have to exert too much force on the grids. There is a little bit of glue on it.

Step 2 — Screw!



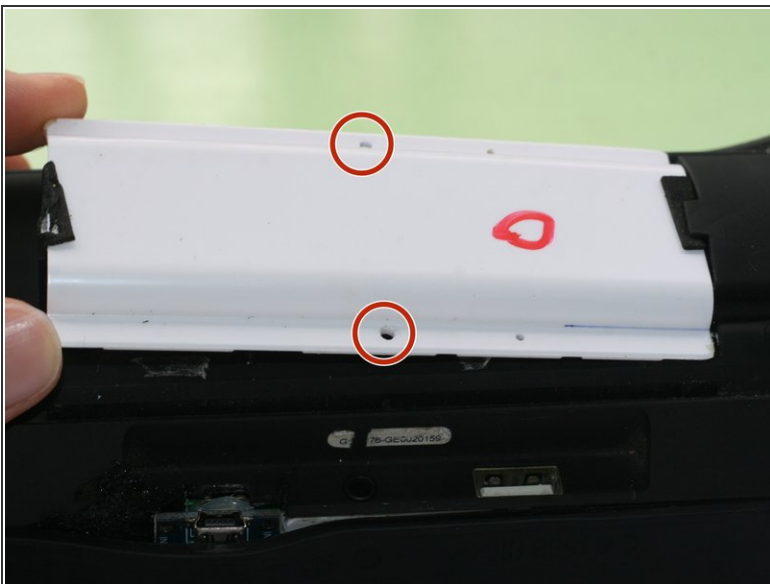
- Remove the first 4 screws
- Blow up the round of plastic then take care of the remaining 4 screws.

Step 3 — We're in!



- Now you can access the motherboard.
- To disconnect the battery: disconnect the microphone first, it will make things easier.

Step 4 — Drums



- Unscrew the two screws of the white cover
- Get out of his notch, and here's the battery!

To reassemble your device, follow these instructions in reverse order.