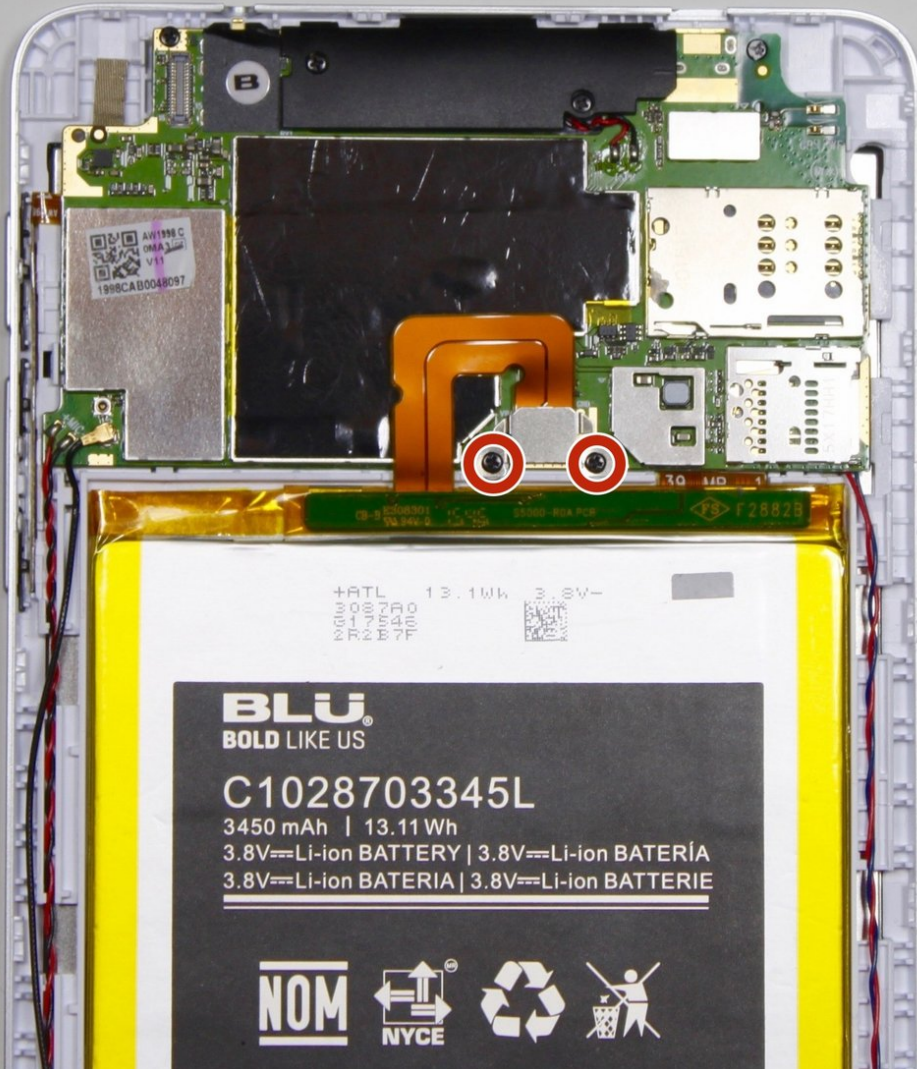




# BLU Studio 7.0 II Battery Connection

Disconnect the battery of your BLU Studio 7.0 II.

Written By: Abby



---

## INTRODUCTION

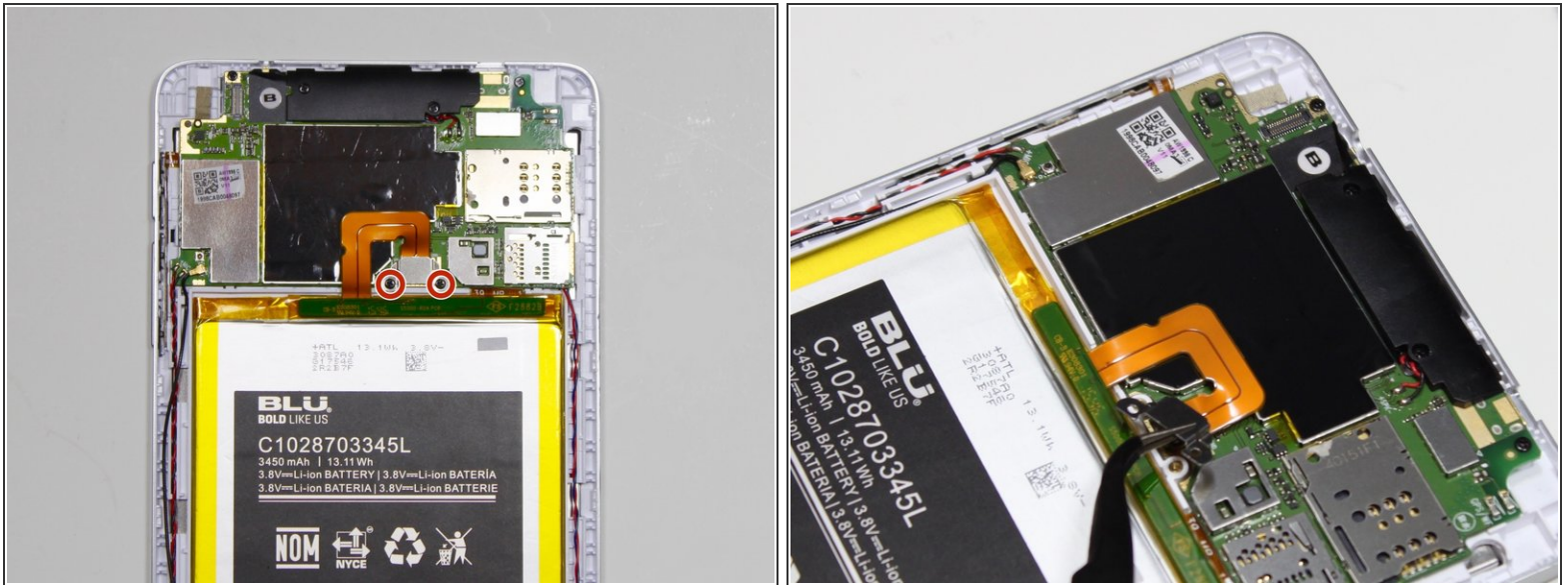
Prereq only; disconnect the battery before anything else.

---

### TOOLS:

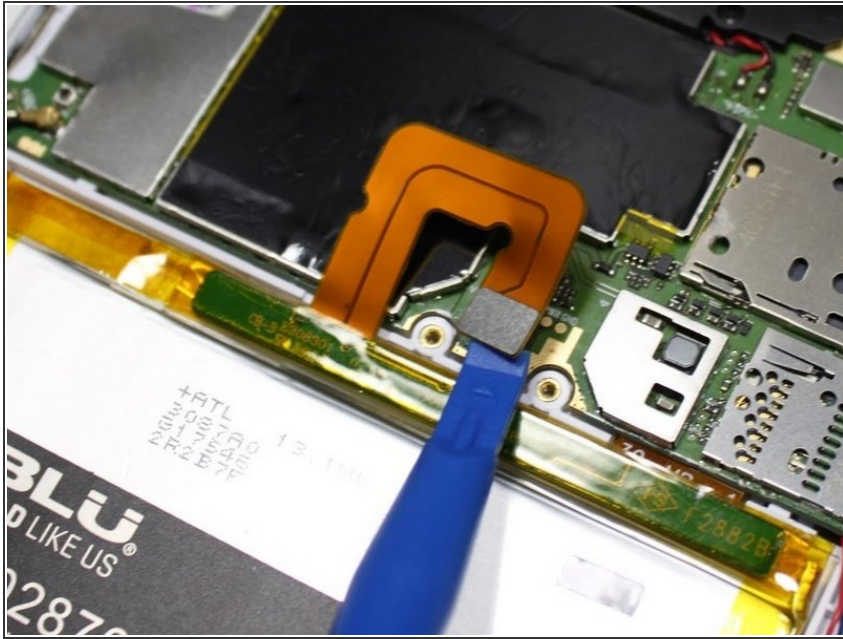
- [Phillips #00 Screwdriver](#) (1)
-

## Step 1 — Battery Connection



- Using the PH00 screw driver, remove the two 3mm screws.
- ⓘ These screws may be covered by small, round black stickers. Remove the stickers to continue.
- Remove the metal clip that connects the battery ribbon to the motherboard by lifting up. Precision tweezers work best for this part.
- ☞ Be sure to only grab the metal clip with the tweezers, not the connector underneath.

## Step 2



- Disconnect the battery connector using a plastic opening tool or the flat end of a spudger.

To reassemble your device, follow these instructions in reverse order.