



# Canon PowerShot SD400 Camera Case Replacement

Replacing the camera case is a simple installation, and can be performed quickly.

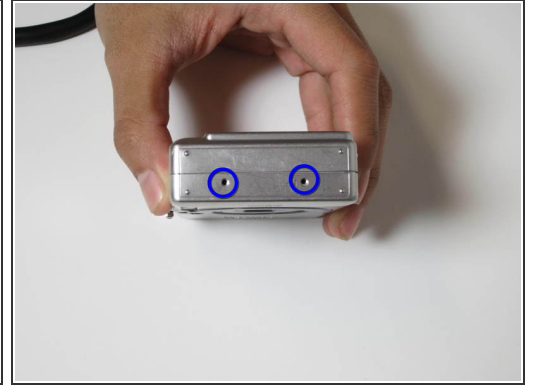
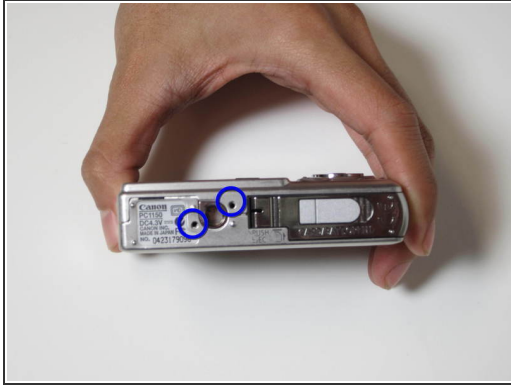
Written By: Yi Huang Ke



 **TOOLS:**

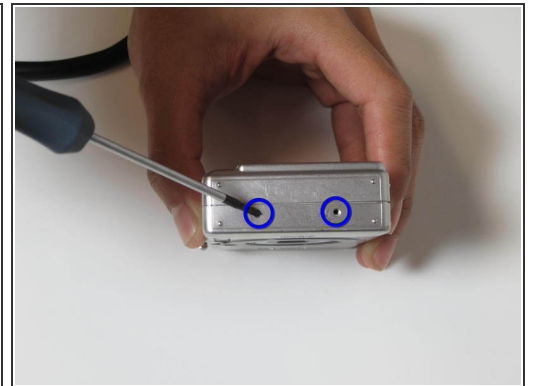
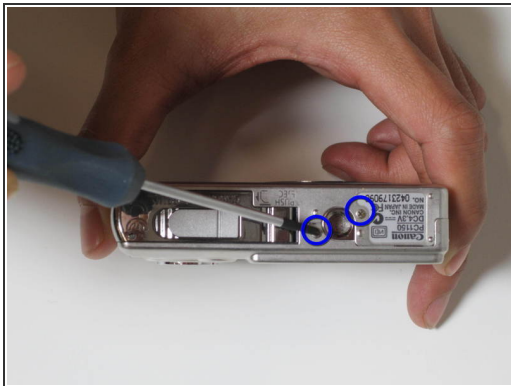
- [Phillips #00 Screwdriver](#) (1)
-

## Step 1 — Camera Case



- There are 6 screws total that you need to remove in order to open the case (bottom and both sides, each has 2 screws)

## Step 2



- Carefully remove the screws using a screwdriver and put them somewhere safe so they will not get lost.

### Step 3



- Open the case gently. The wrist strap plate and disk pieces will fall out during the process. The second picture shows what wrist strap plate and disk looks like (The circled parts).
- Replace the broken camera case with the new one.

To reassemble your device, follow these instructions in reverse order.

This document was last generated on 2017-07-19 07:25:03 AM.