



LG K10 Rear Camera Replacement

This video shows you how to repair LG K10 rear facing camera.

Written By: Witrigs

LG K10 Rear Facing Camera Repair Guide



 **TOOLS:**

- [Spudger](#) (1)
- [Tweezers](#) (1)
- [Phillips #00 Screwdriver](#) (1)
- [iFixit Opening Picks set of 6](#) (1)

 **PARTS:**

- [LG K10 Rear Facing Camera Replacement](#) (1)

Step 1 — Rear Camera



- Power off the device
- Remove the backing

Step 2



- Remove the battery

Step 3



- Unscrew every screw of the bottom of the phone and use guitar picks to remove the plastic frame of the phone

Step 4



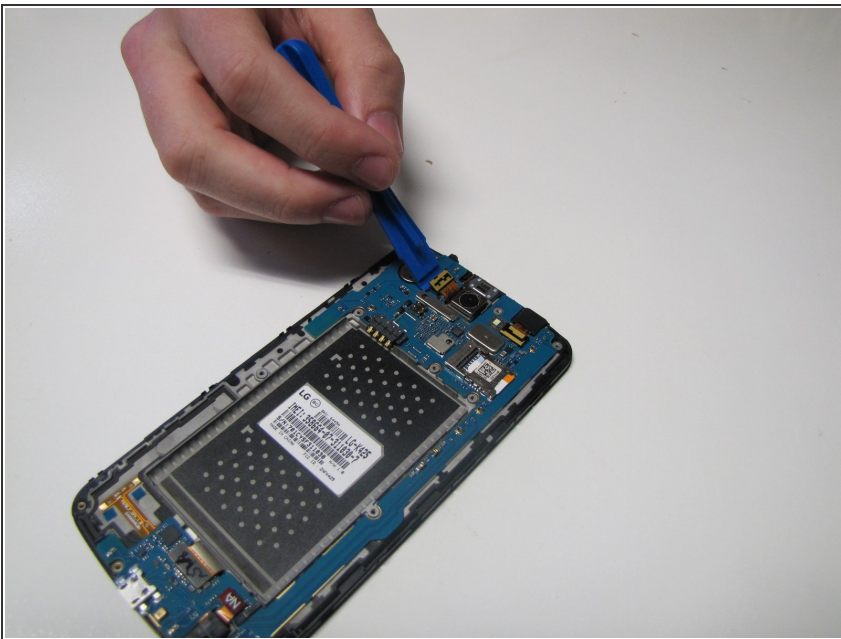
- With a pick lift the side of the phone, in order to remove the backside
- ⓘ Repeat this step on all sides of the phone

Step 5



- Once the back is completely off, you now have complete access to the rear camera
- ⓘ You also now have access to the rear/ front speakers, and motherboard

Step 6



- Insert a plastic opening tool under the edge of the rear camera's press-fit connector. Lift the connector up and away from the motherboard to pop the ribbon cable free.
- Remove the rear facing camera.

To reassemble your device, follow these instructions in reverse order.