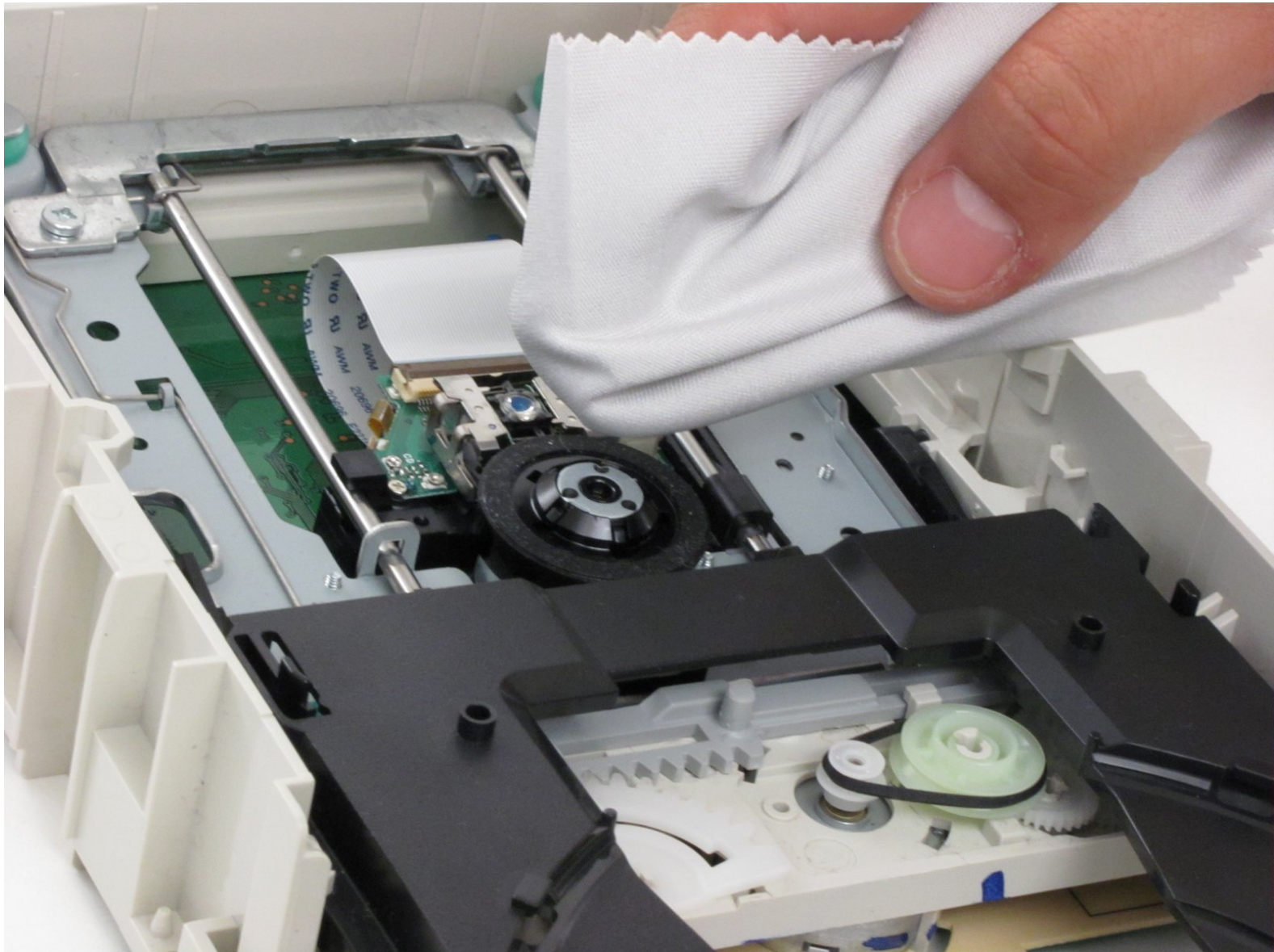




# How to clean Lite-On LightScribe SHM-165H6S lens

Cleaning lens of the drive.

Written By: aaa



## INTRODUCTION

If your drive is having problems reading or writing a disk, dust may have collected on the lens, which will need to be cleaned.

---

### TOOLS:

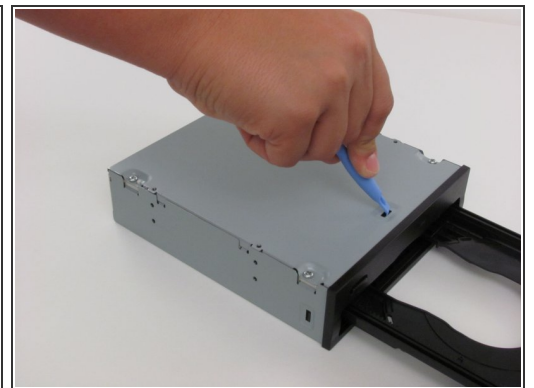
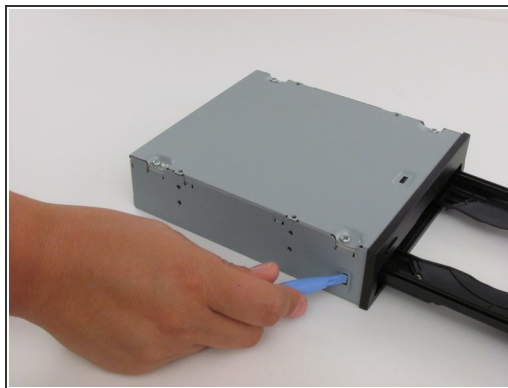
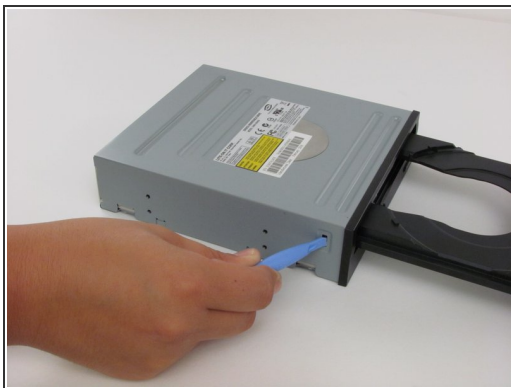
- [Paper Clip](#) (1)
  - [Phillips #2 Screwdriver](#) (1)
  - [iFixit Opening Tools](#) (1)
  - [Soft Cloth](#) (1)
-

## Step 1 — Chassis



- Insert an open paper clip into the small hole on the left side of the faceplate.
- After the tray opens, extend it fully.

## Step 2



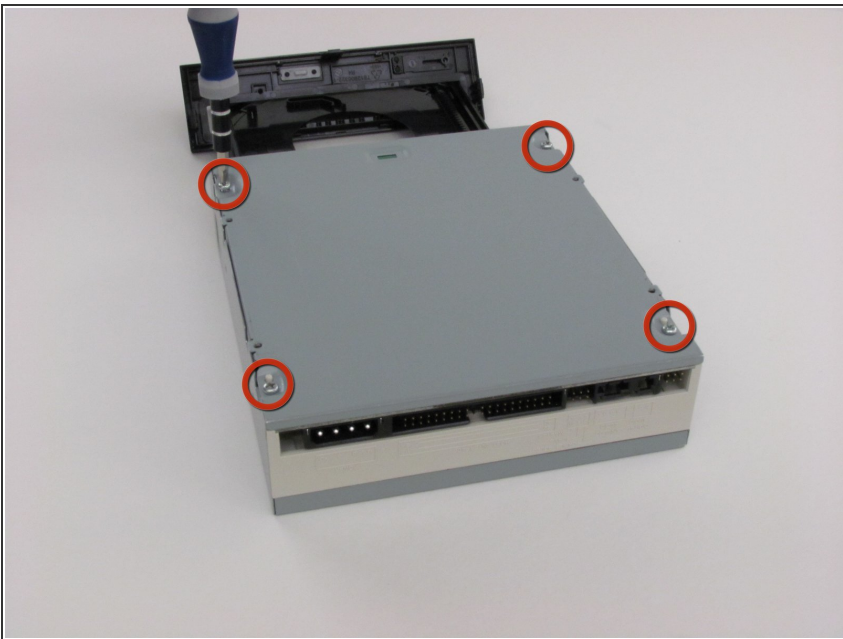
- Use an opening device to push in the black tabs on the left, right and bottom of the outer chassis to unhook the faceplate.

### Step 3



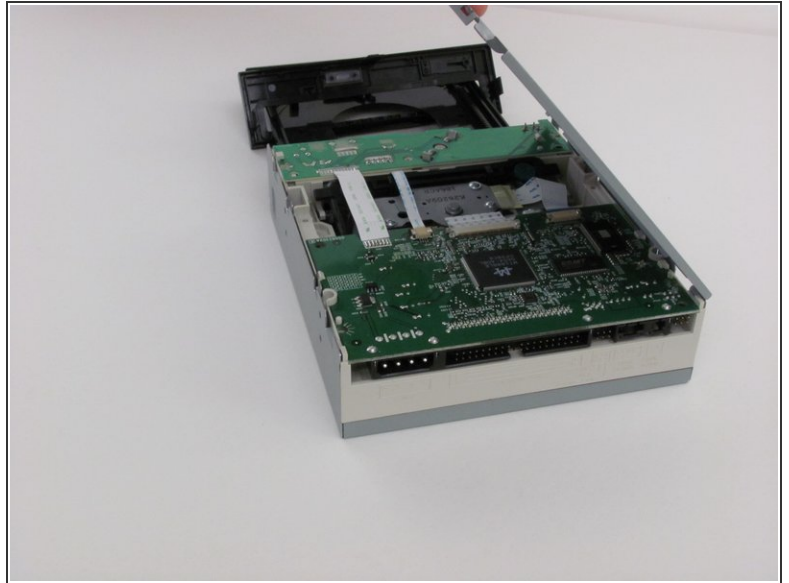
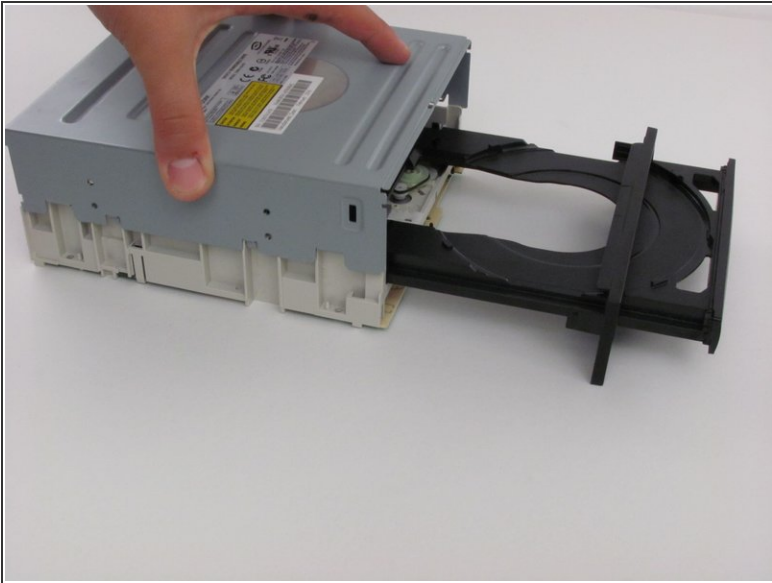
- Pull the faceplate away from the main chassis.

### Step 4



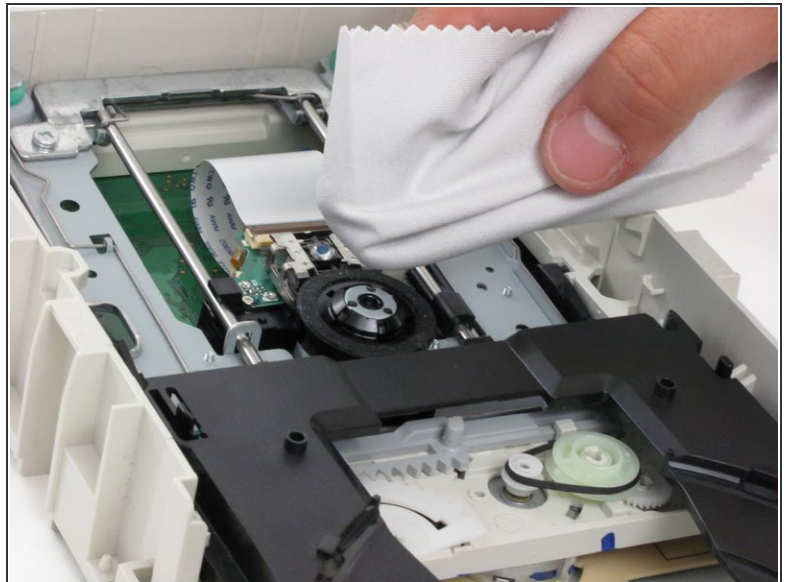
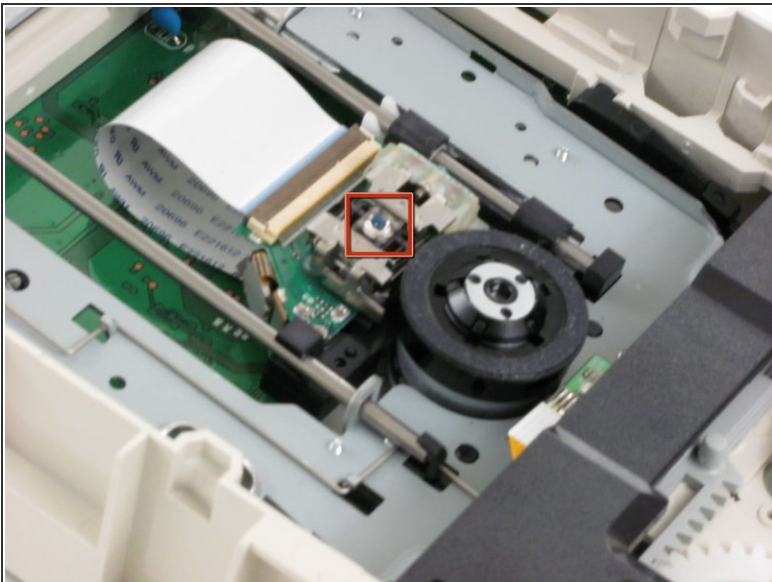
- Unscrew the four 8.5 mm screws on the bottom chassis using a Philips #2 screwdriver.

## Step 5



- Lift the top and bottom chassis straight up in order to remove them.

## Step 6 — How to clean Lite-On LightScribe SHM-165H6S lens



- Clean the lens.

To reassemble your device, follow these instructions in reverse order.

