



Samsung Glyde Antenna Replacement

Installation procedure for the Samsung Glyde internal antenna.

Written By: Cameron Law



INTRODUCTION

This guide will provide a step by step procedure for installing the internal antenna.

TOOLS:

- [Phillips #00 Screwdriver](#) (1)
 - [iFixit Opening Tools](#) (1)
-

Step 1 — Battery



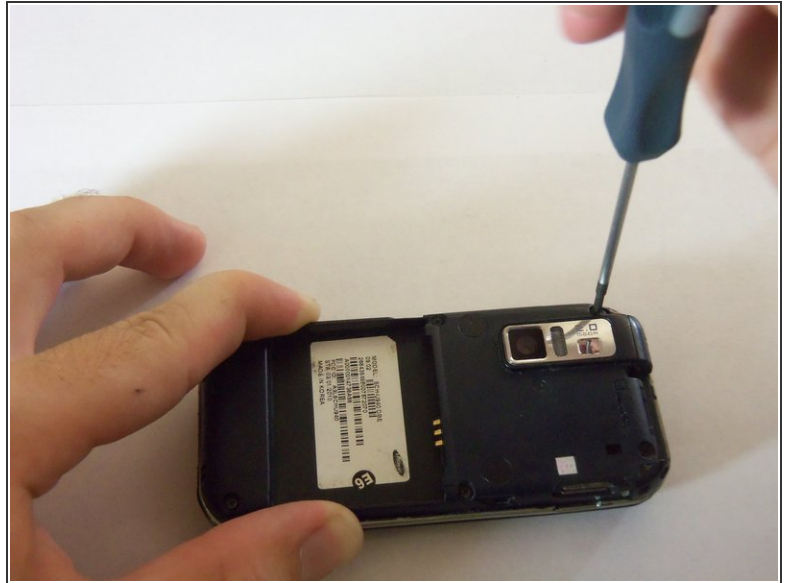
- Using your thumb, press down and slide the back cover away from the camera.

Step 2



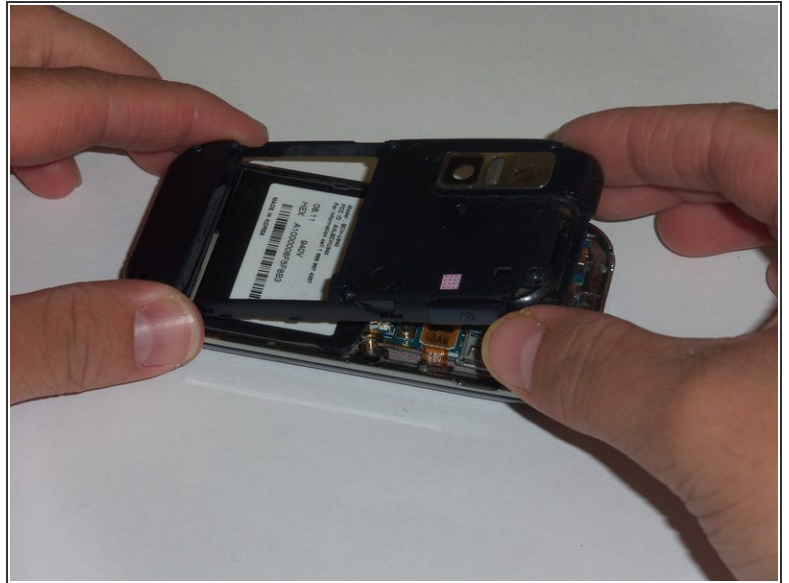
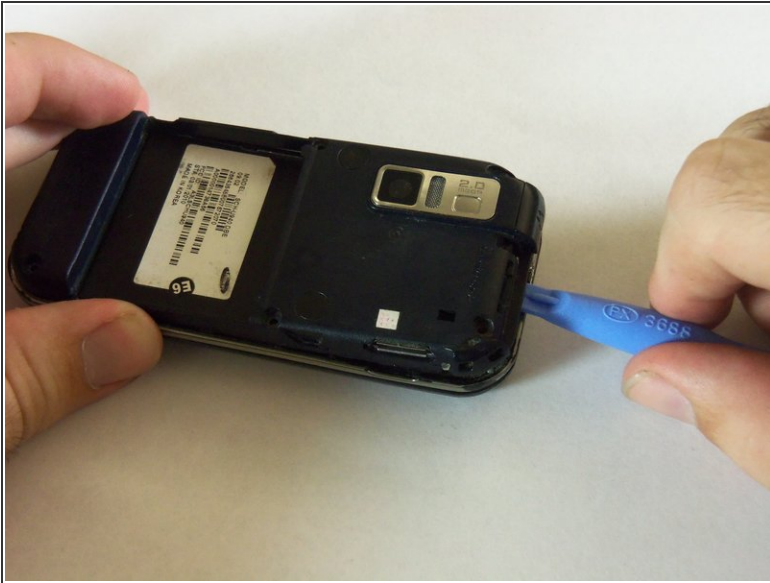
- Remove the battery from the phone by using your plastic opening tool to find a gap at any edge of the battery and lifting the battery up.

Step 3 — Antenna



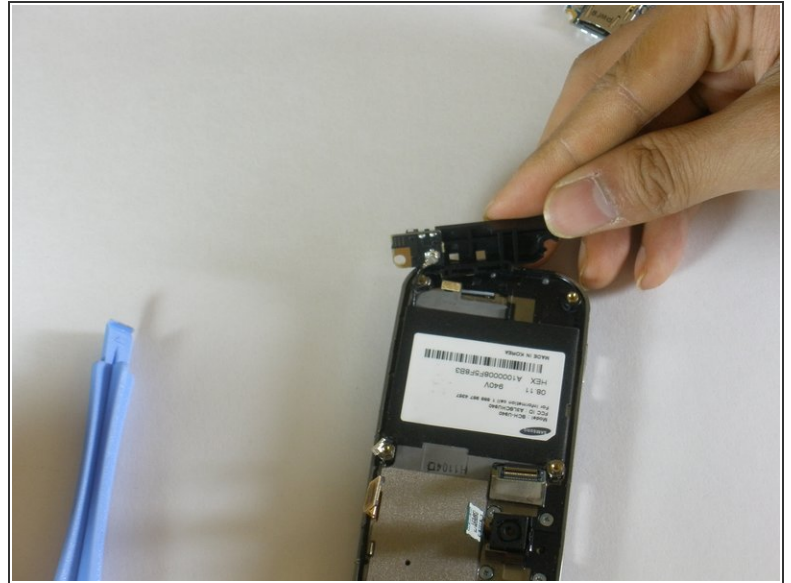
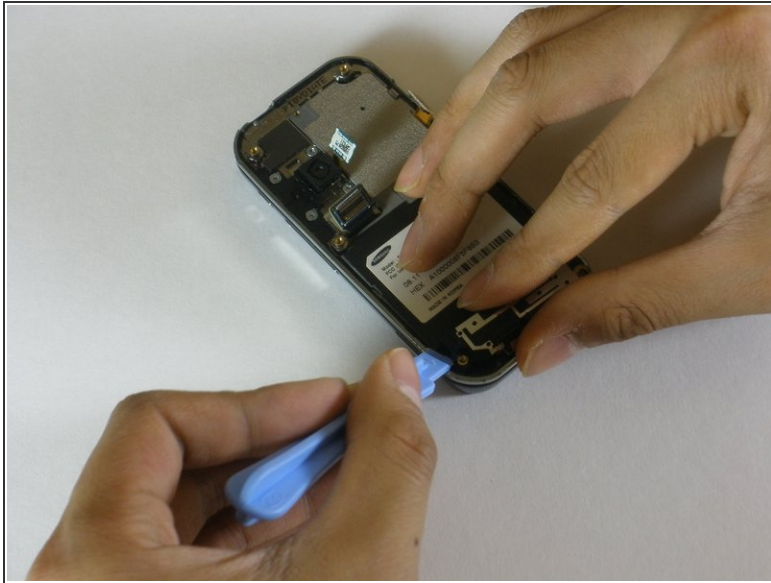
- Using a Phillips #00 screwdriver, remove the six 4mm screws holding the back case together.

Step 4



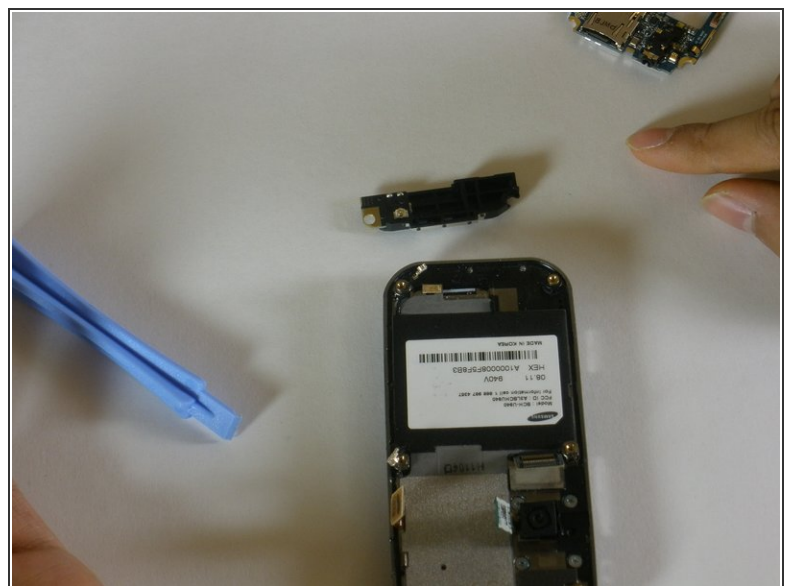
- Use a plastic opening tool to pry the case off. To do this, find a gap on any side of the phone, top preferably, and slip the tip of the tool in the gap.
- Now use moderate strength and slowly maneuver the tool around the outside until the case becomes loose.
- Using your fingers, take the case off.

Step 5



- The antenna is located on the bottom of the phone. It is the small rectangular shaped object sticking out on one of the ends.
- Use a plastic opening tool to prop the antenna out. To do so, slip the tip of the tool on one of the edges of the antenna. Use moderate pressure to pry the antenna out.

Step 6



- Using a plastic opening tool, disconnect the connector leading from the antenna to the phone.

To reassemble your device, follow these instructions in reverse order.

This document was last generated on 2019-07-08 11:58:27 PM.