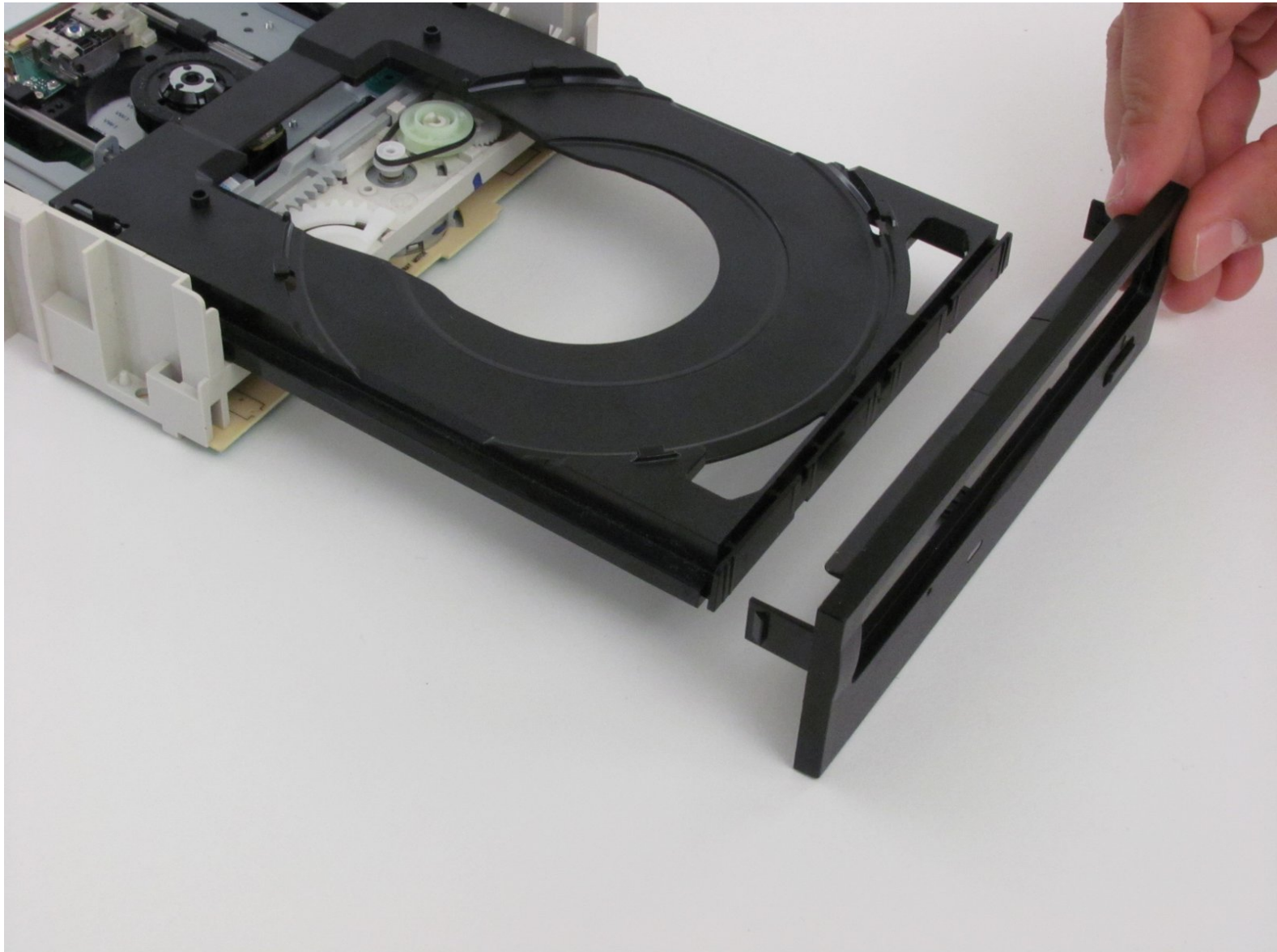




Lite-On LightScribe SHM-165H6S Faceplate/Eject button Replacement

Replacing the faceplate of the drive.

Written By: aaa



INTRODUCTION

If the faceplate has become broken or cracked, you may want to replace it.

TOOLS:

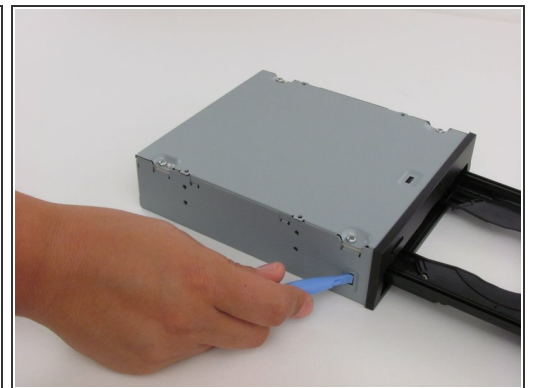
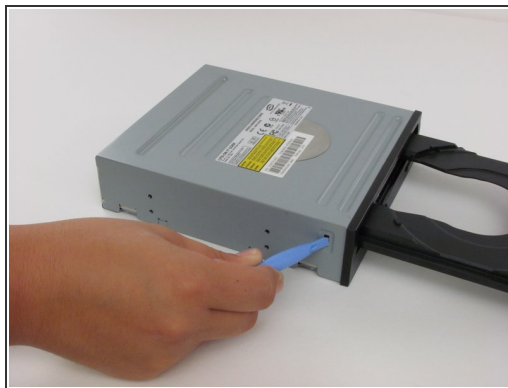
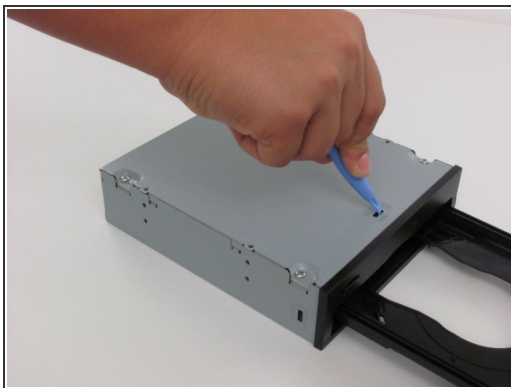
- [Paper Clip](#) (1)
 - [iFixit Opening Tools](#) (1)
-

Step 1 — Faceplate/Eject button



- Insert an open paper clip into small hole on left side of faceplate.
- The tray should click open, use your hands to gently extend it fully.

Step 2



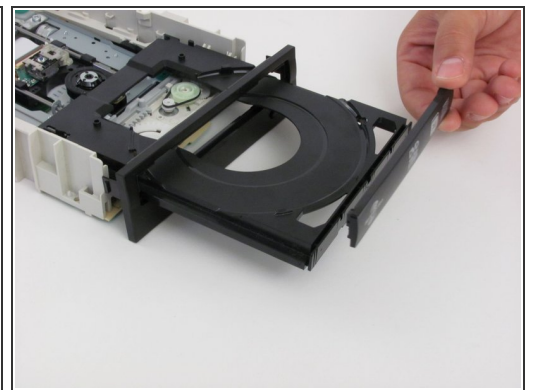
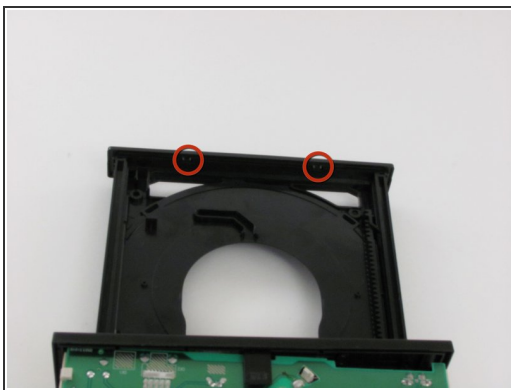
- Push in black tabs on left, right and bottom of outer chassis to unhook faceplate.

Step 3



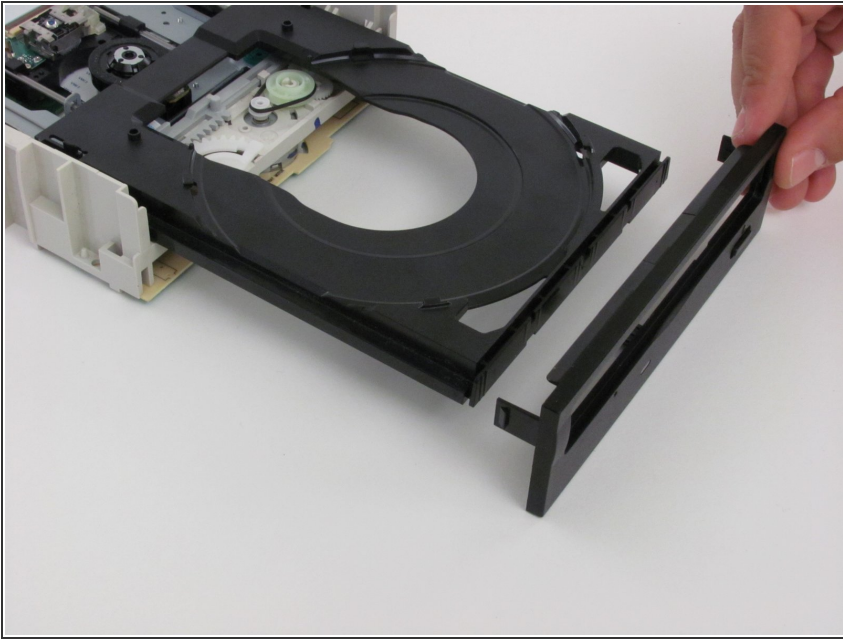
- Pull face plate away from main chassis.

Step 4



- Locate the two tabs on the underside of the tray cover.
- Pry the tabs loose and remove cover.

Step 5



- Remove and replace faceplate.

To reassemble your device, follow these instructions in reverse order.