



# why! W670SZQ1 Replacement Hard Disk (mass storage)

Written By: Felice Suglia

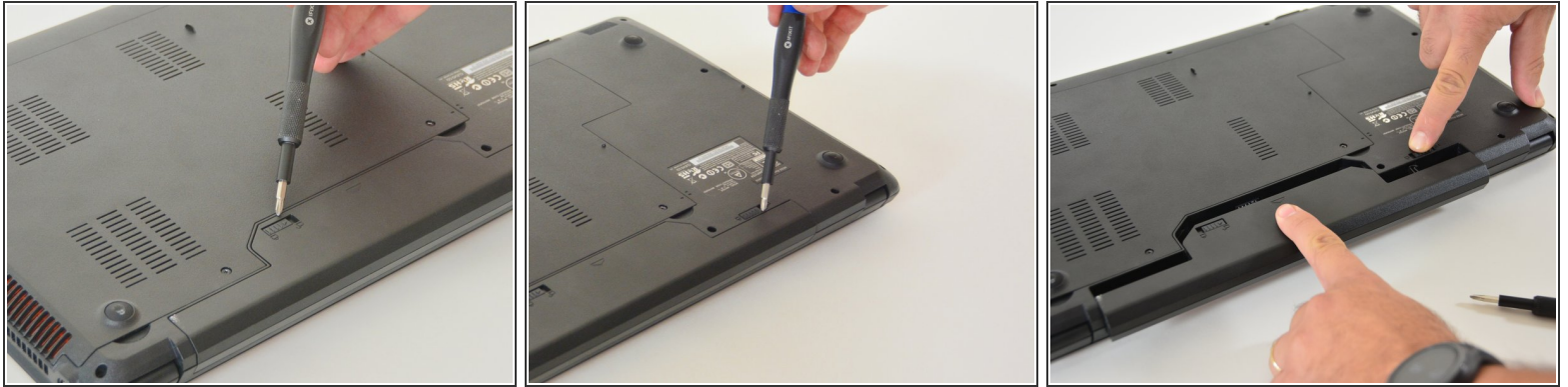




## PARTS:

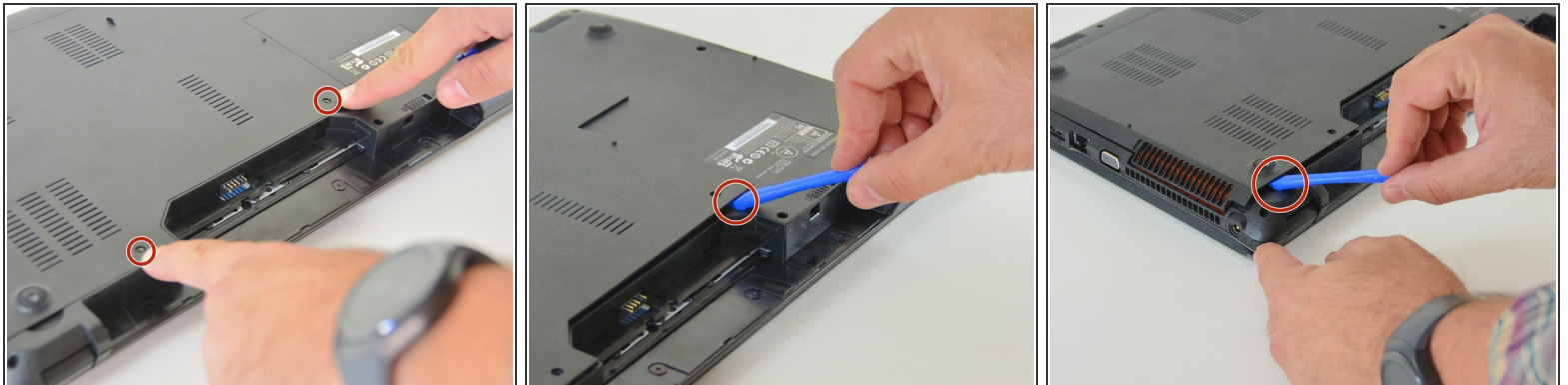
- [New Item](#) (1)
  - [New Item](#) (1)
-

## Step 1 — The Batteries



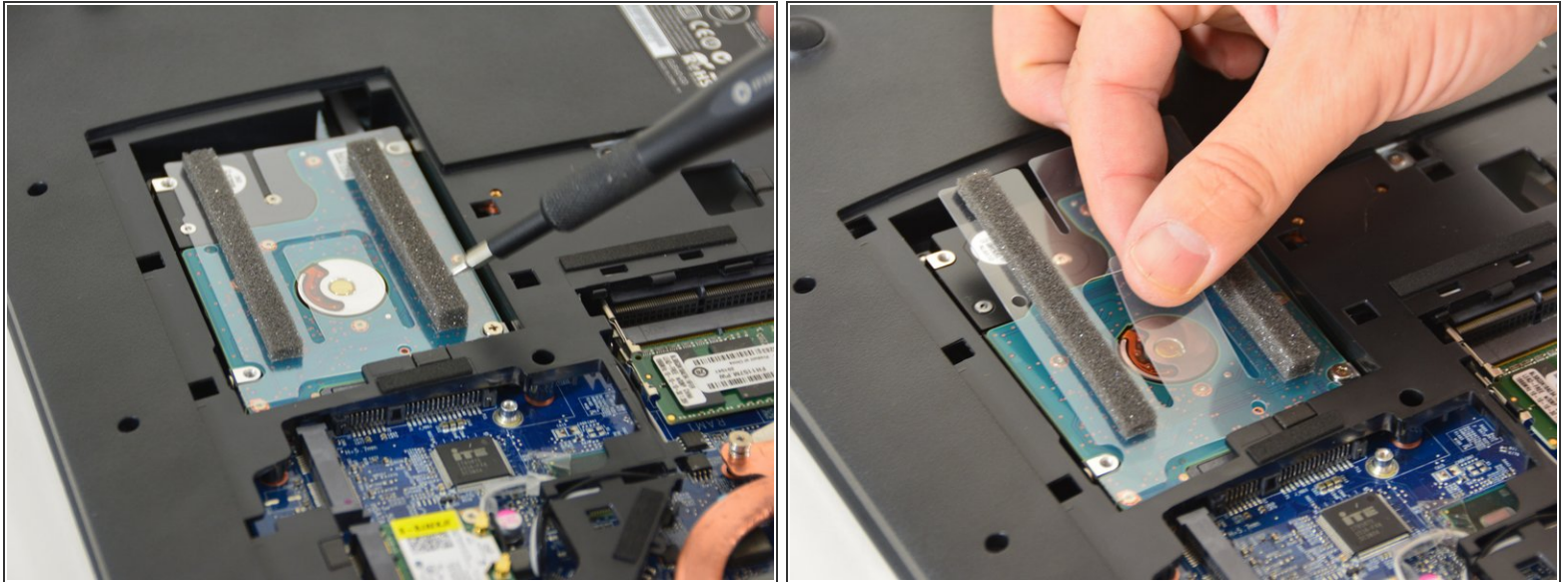
- Unlock the lock latch on the left.
- Unlock the lock latch on the right.
- Remove the battery while holding the lock latch unlocked.

## Step 2 — Access to Major Components



- Using the Philips # 0 screwdriver, unscrew the 2 screws from the bottom cover.
- Lift the bottom right cover with the iFixit Opening Tool.
- Lift the lower left cover with the iFixit Opening Tool.
- Finally clear the bottom cover completely to access the main components.

### Step 3 — Hard disk (mass storage)



- Locate the hard drive with its plastic tab.
- Remove the HDD from its SATA port using the plastic tab

To reassemble your device, follow the instructions in reverse order.