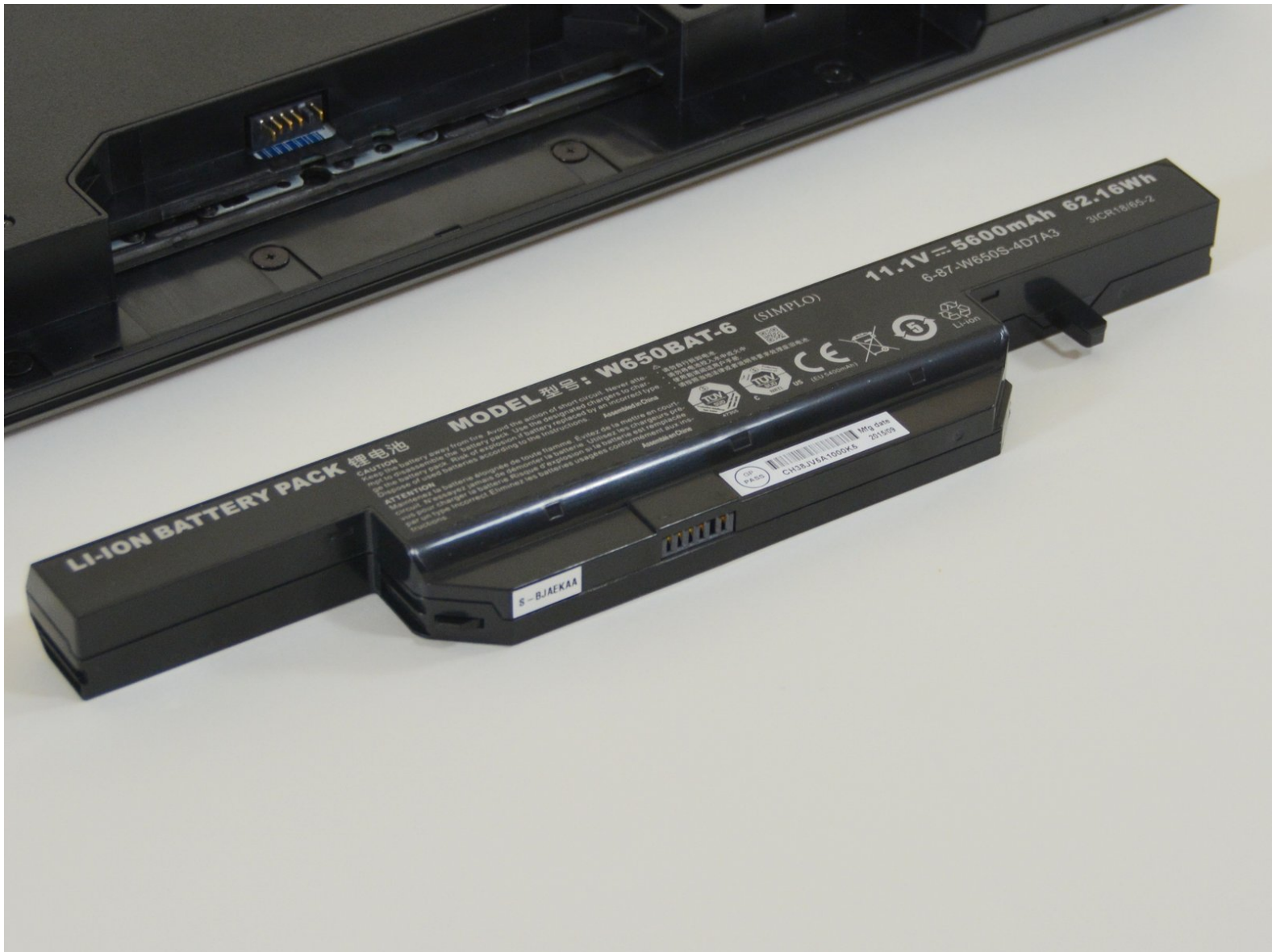




why! W670SZQ1 The Batteries

Before any intervention, it is recommended to remove the battery

Written By: Felice Suglia



INTRODUCTION

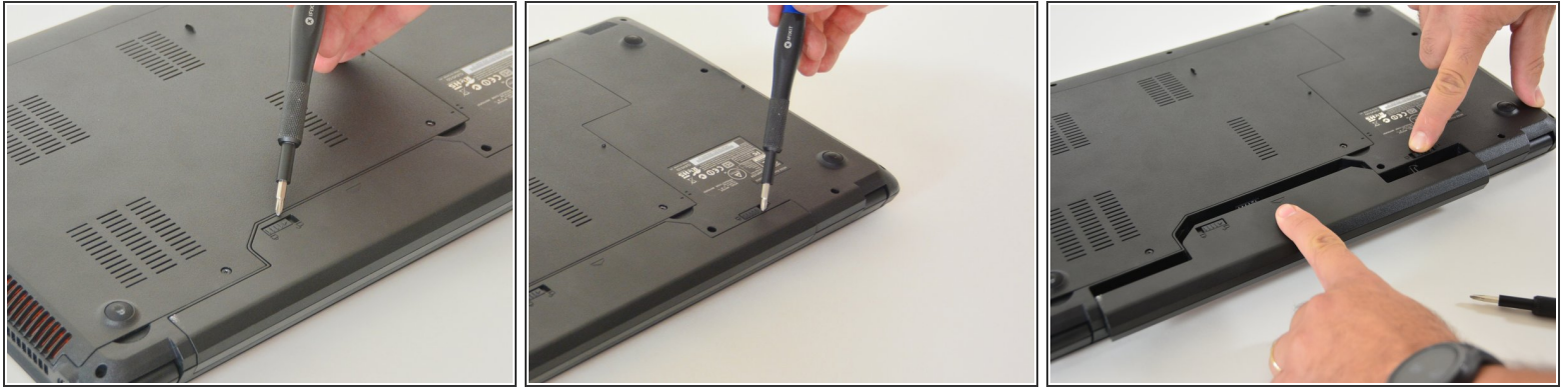
Before any intervention, it is recommended to remove the battery



PARTS:

- [New Item](#) (1)
 - [New Item](#) (1)
-

Step 1 — The Batteries



- Unlock the lock latch on the left.
- Unlock the lock latch on the right.
- Remove the battery while holding the lock latch unlocked.

To reassemble your device, Follow these instructions in reverse order.

This document was last generated on 2019-01-15 05:44:55 AM.