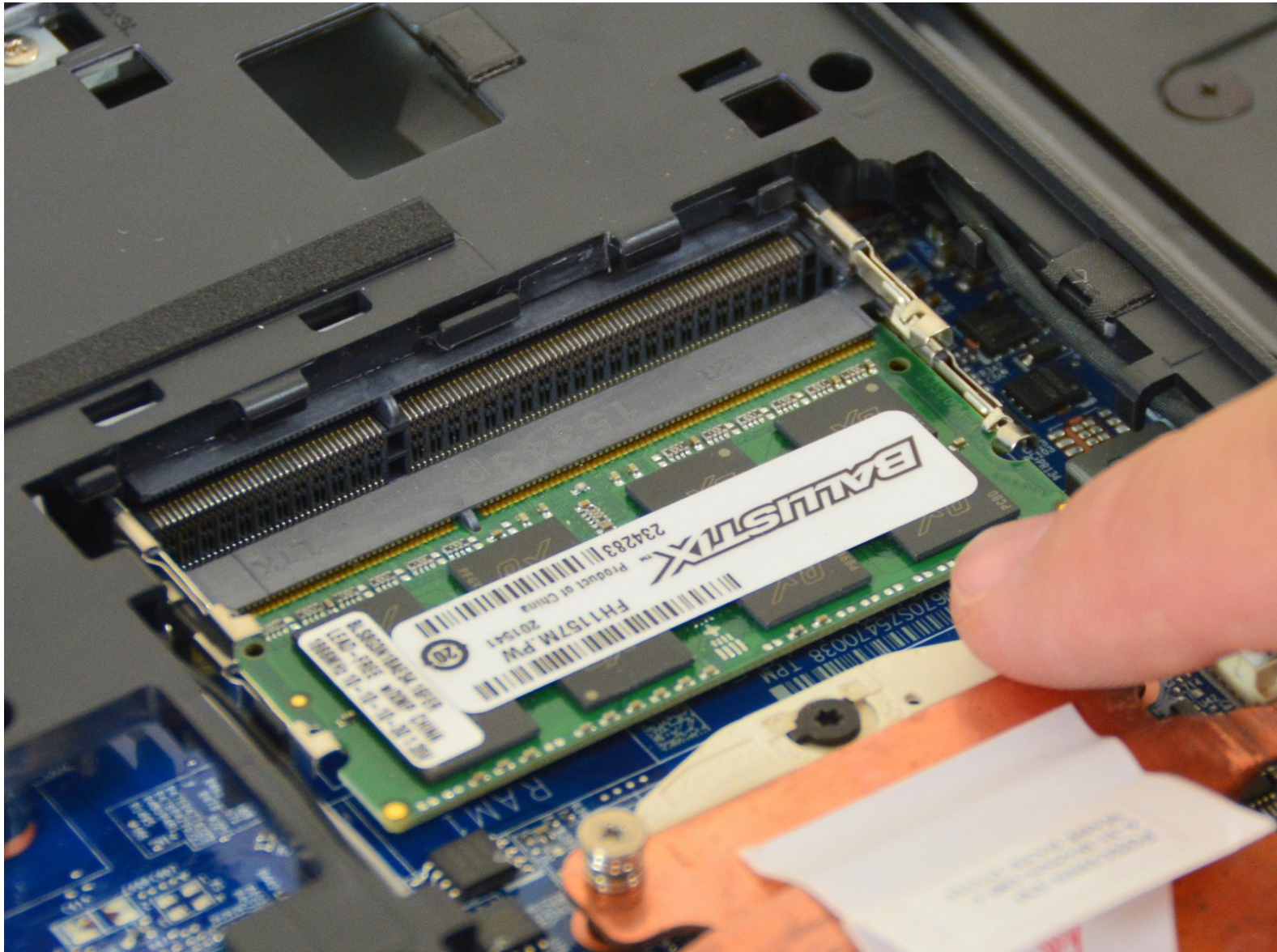




why! W670SZQ1 Replacement RAM Memory Extension

Write a short summary.

Written By: Felice Suglia



INTRODUCTION

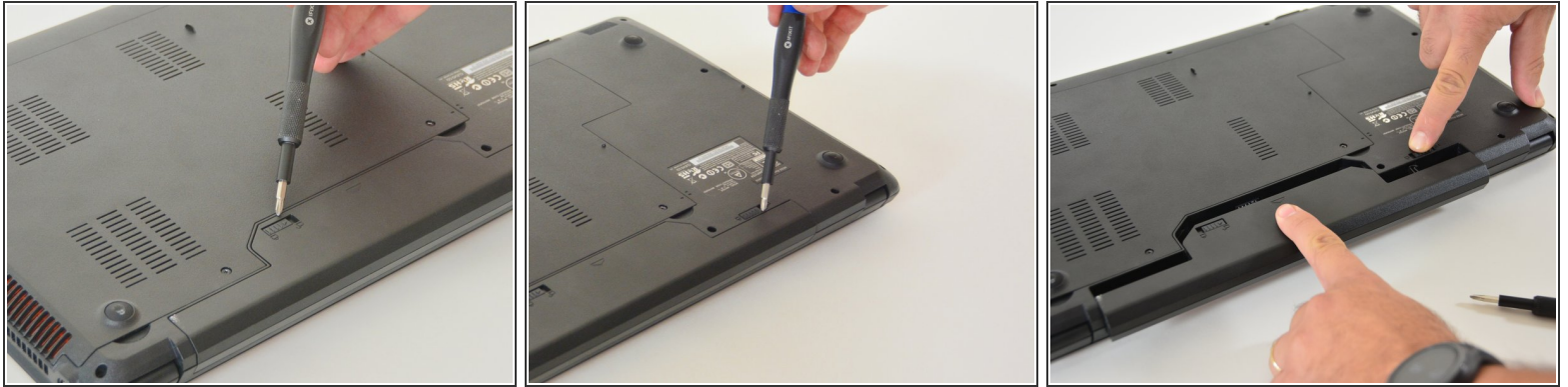
Describe what you will do.



PARTS:

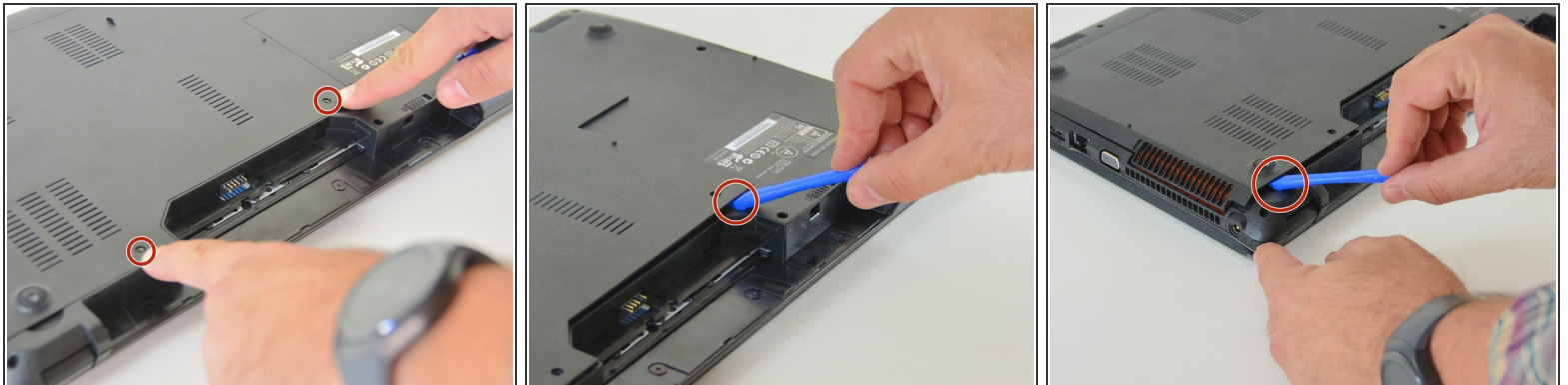
- [New Item](#) (1)
 - [New Item](#) (1)
-

Step 1 — The Batteries



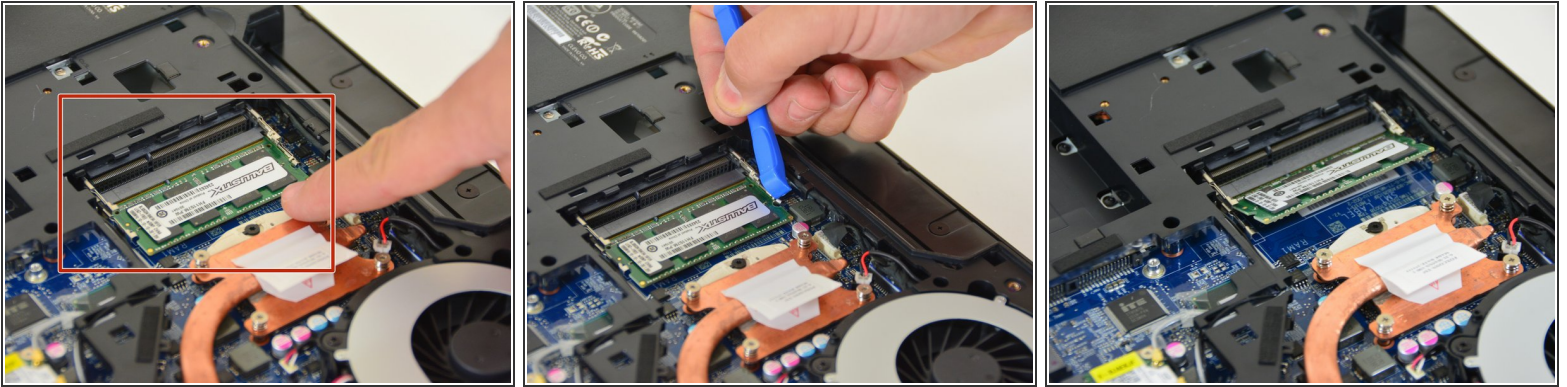
- Unlock the lock latch on the left.
- Unlock the lock latch on the right.
- Remove the battery while holding the lock latch unlocked.

Step 2 — Access to Major Components



- Using the Philips # 0 screwdriver, unscrew the 2 screws from the bottom cover.
- Lift the bottom right cover with the iFixit Opening Tool.
- Lift the lower left cover with the iFixit Opening Tool.
- Finally clear the bottom cover completely to access the main components.

Step 3 — RAM Memory



- Locate the RAM card in its slot.
- Spread the leaf springs that hold the memory module in place (left and right).
- Remove the memory module (RAM) from its connector.

To reassemble your device, Follow these instructions in reverse order.