

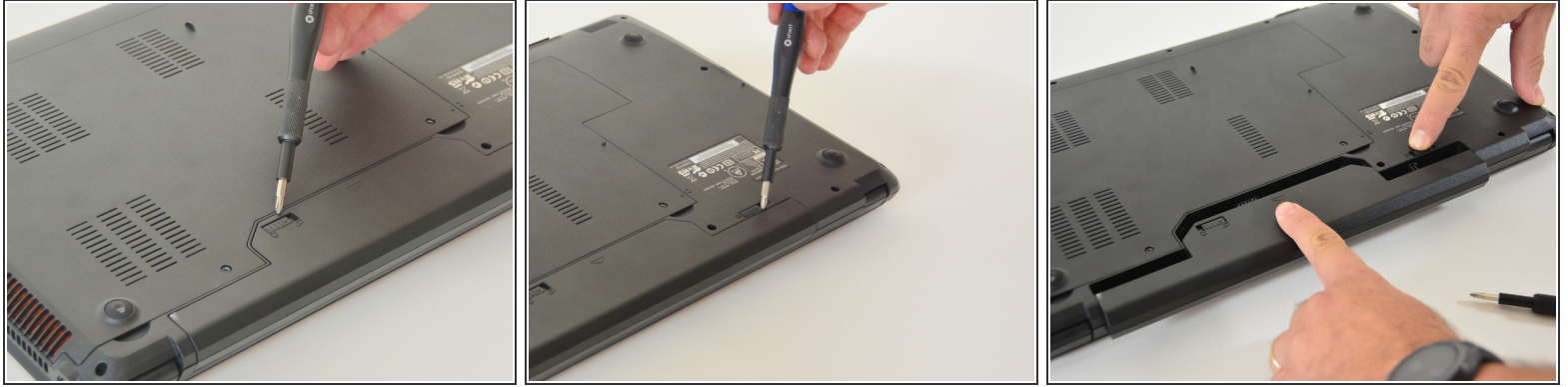


# why! W670SZQ1 Replace accumulator

Written By: Felice Suglia



## Step 1 — accumulator



- Open the latch of the accumulator on the left side.
- Open the battery latch on the right side.
- Remove the accumulator by simultaneously holding the right-hand latch open.

Repeat the steps in order to reassemble your device.

This document was last generated on 2018-06-15 08:38:23 AM.