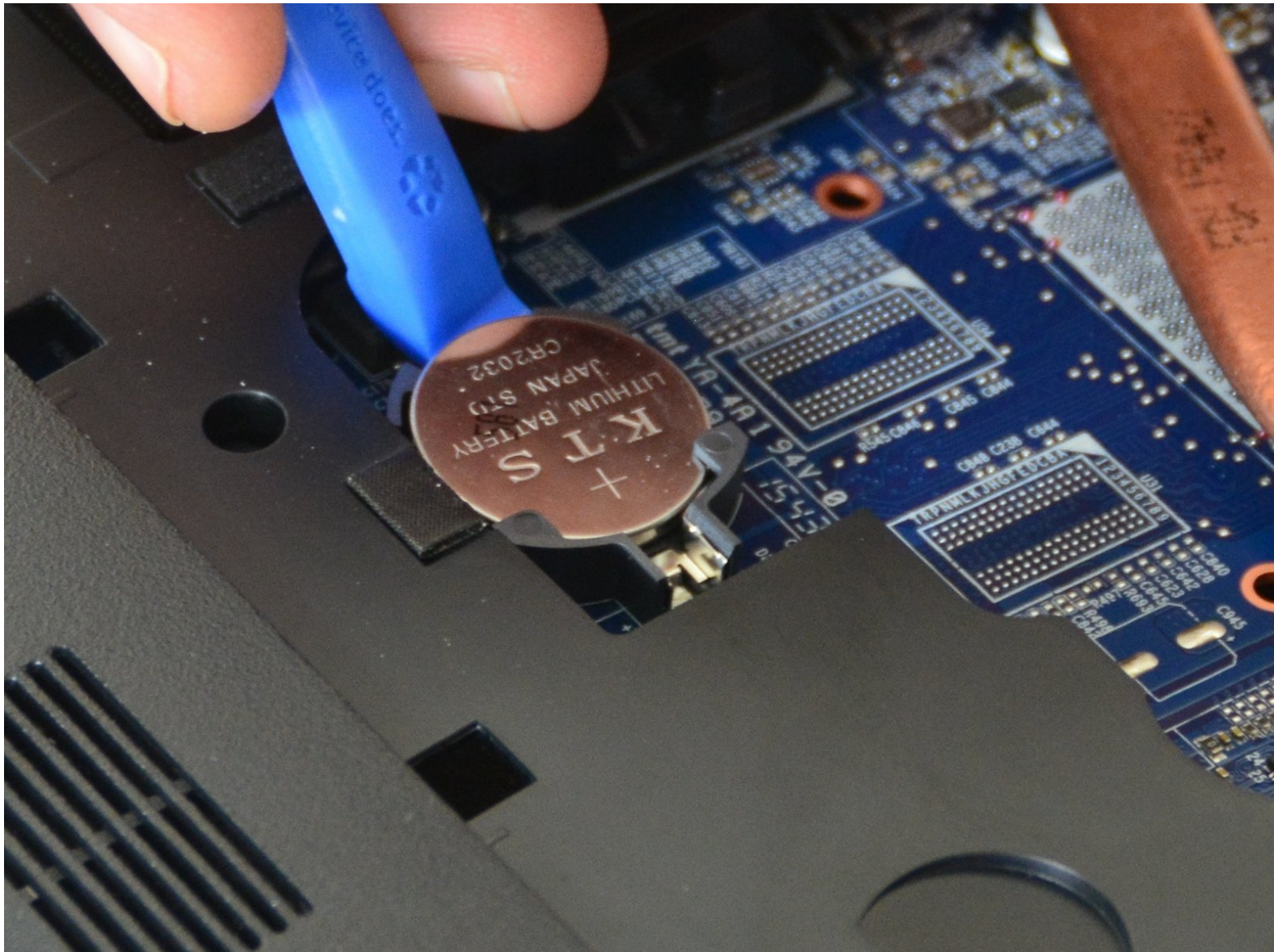


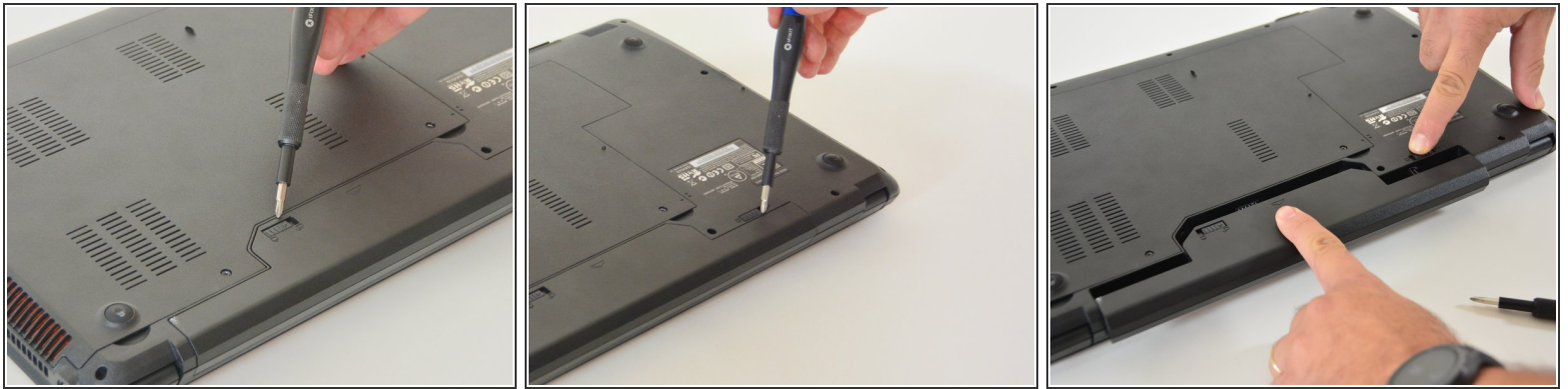


# Replacement of the W670SZQ1 BIOS Battery

Written By: Felice Suglia

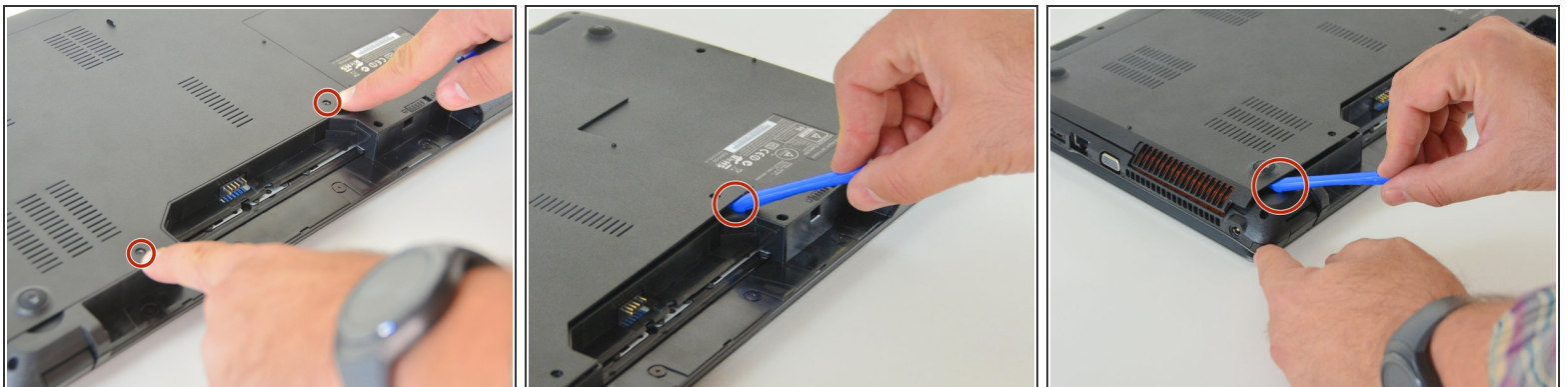


## Step 1 — accumulator



- Open the latch of the accumulator on the left side.
- Open the battery latch on the right side.
- Remove the accumulator by simultaneously holding the right-hand latch open.

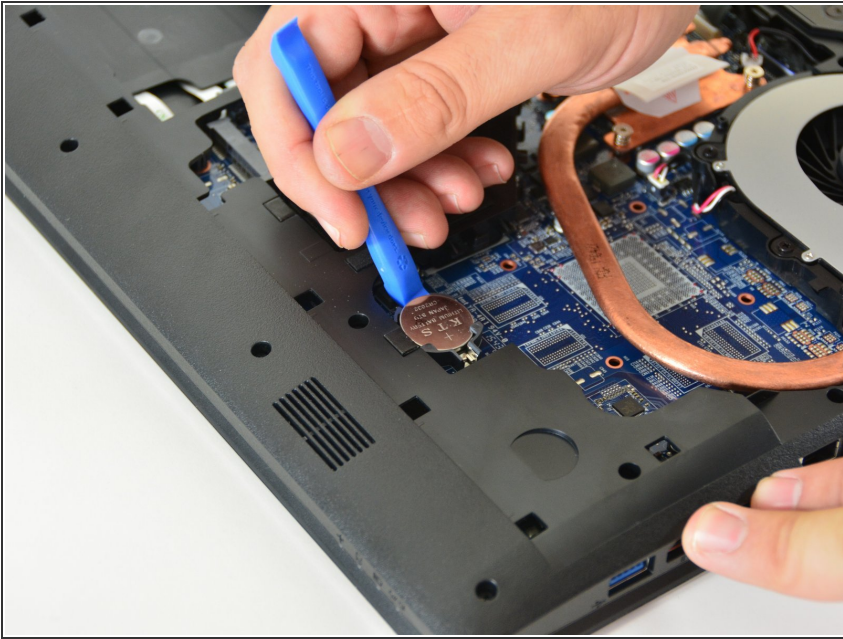
## Step 2 — Access to the most important components



- Use the Philips screwdriver to remove the two screws at the bottom of the cover.
- Lift the cover at the bottom right with the iFixit Opening Tool
- Lift the cover at the bottom left with the iFixit Opening Tool
- Finally, remove the cover to gain access to the most important components.



### Step 3 — BIOS battery



- Be careful removing the BIOS battery from its holder.
- Please do not throw the battery in the garbage. In Switzerland, the electrical shops are obliged to accept all batteries and accumulators for disposal.

## Replacing the W670SZQ1 BIOS Battery

This document was last generated on 2019-08-17 10:31:44 AM.