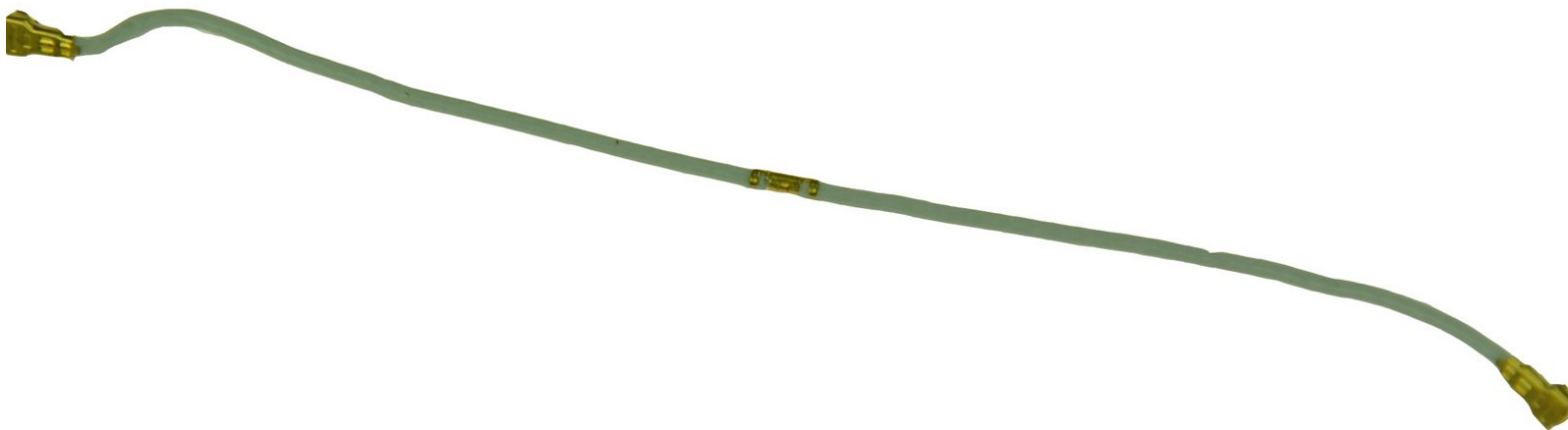




# Samsung Captivate Antenna Cable Replacement

This guide will show you how to install a new antenna cable.

Written By: Drew Bentz



---

## INTRODUCTION

If your Samsung Captivate is not connecting to the network, one problem could be a faulty antenna cable. Replacing this part is very simple and can be accomplished by anyone.

---

### TOOLS:

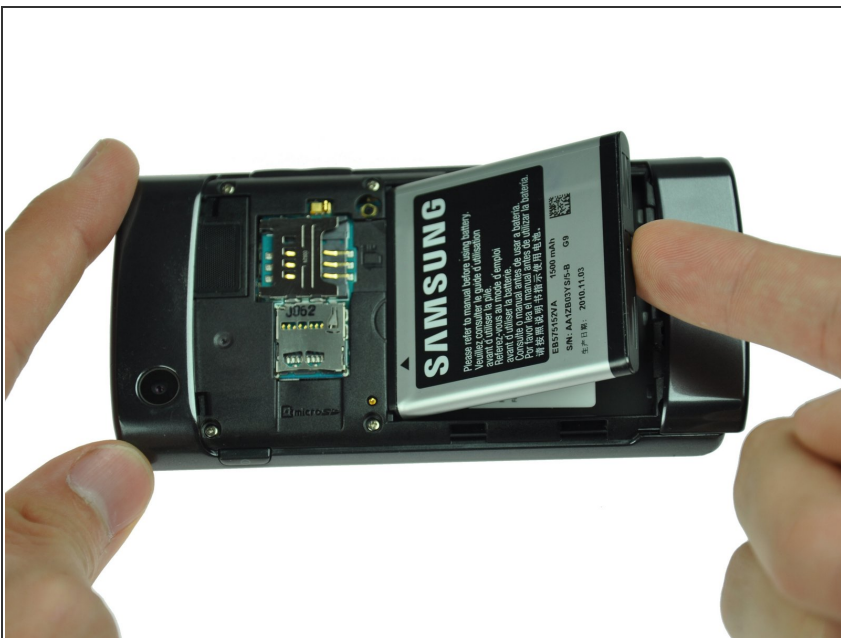
- [Phillips #000 Screwdriver](#) (1)
  - [Spudger](#) (1)
-

## Step 1 — Battery



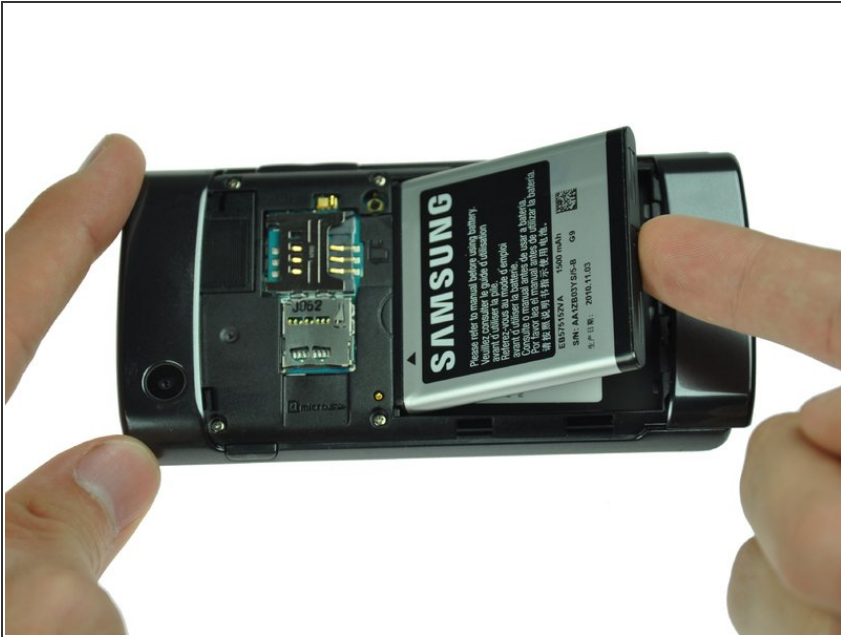
- Remove the back cover by pressing on the bottom section of the phone and sliding the bottom piece downward.
- Lift up the back cover.

## Step 2



- Place your finger on the bottom of the battery and lift to remove.

### Step 3



- Replace the old battery with the new one.

### Step 4 — Rear Case



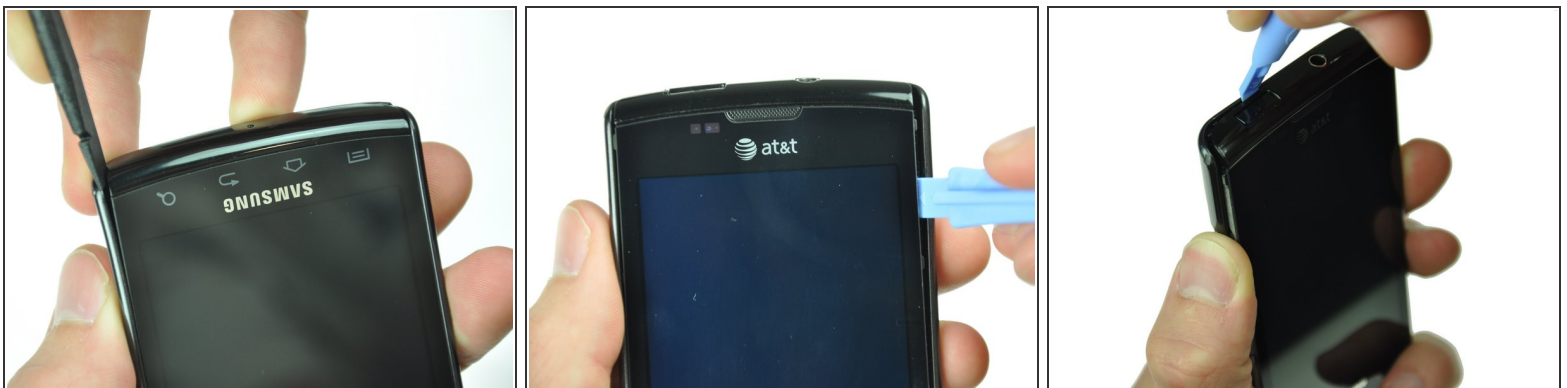
- Insert the spudger underneath the bottom section of the phone.
- Gently lift and push the spudger to slide the bottom section down to reveal two hidden screws.

## Step 5



- Remove the six 4.5mm #000 Phillips screws.

## Step 6



- Starting at a bottom corner, use the spudger to separate the rear case from the front display.
- Move the spudger towards the top on both sides. The plastic opening tool is easier to use for this step.

**⚠** Be careful when detaching the top. Free each side, stopping short of the center of the cover. Apply backward pressure on both corners with a finger applying pressure on the center, and slide the whole back cover toward the bottom of the device. Note: forcing the cover can result in cracked plastic.



## Step 7



- Separate the rear case from the phone.

## Step 8 — Antenna Cable



- Use a spudger tool to pry up the antenna cable from the connector on the motherboard.
- Pry up the other end of the cable from the connector on the antenna array.

To reassemble your device, follow these instructions in reverse order.