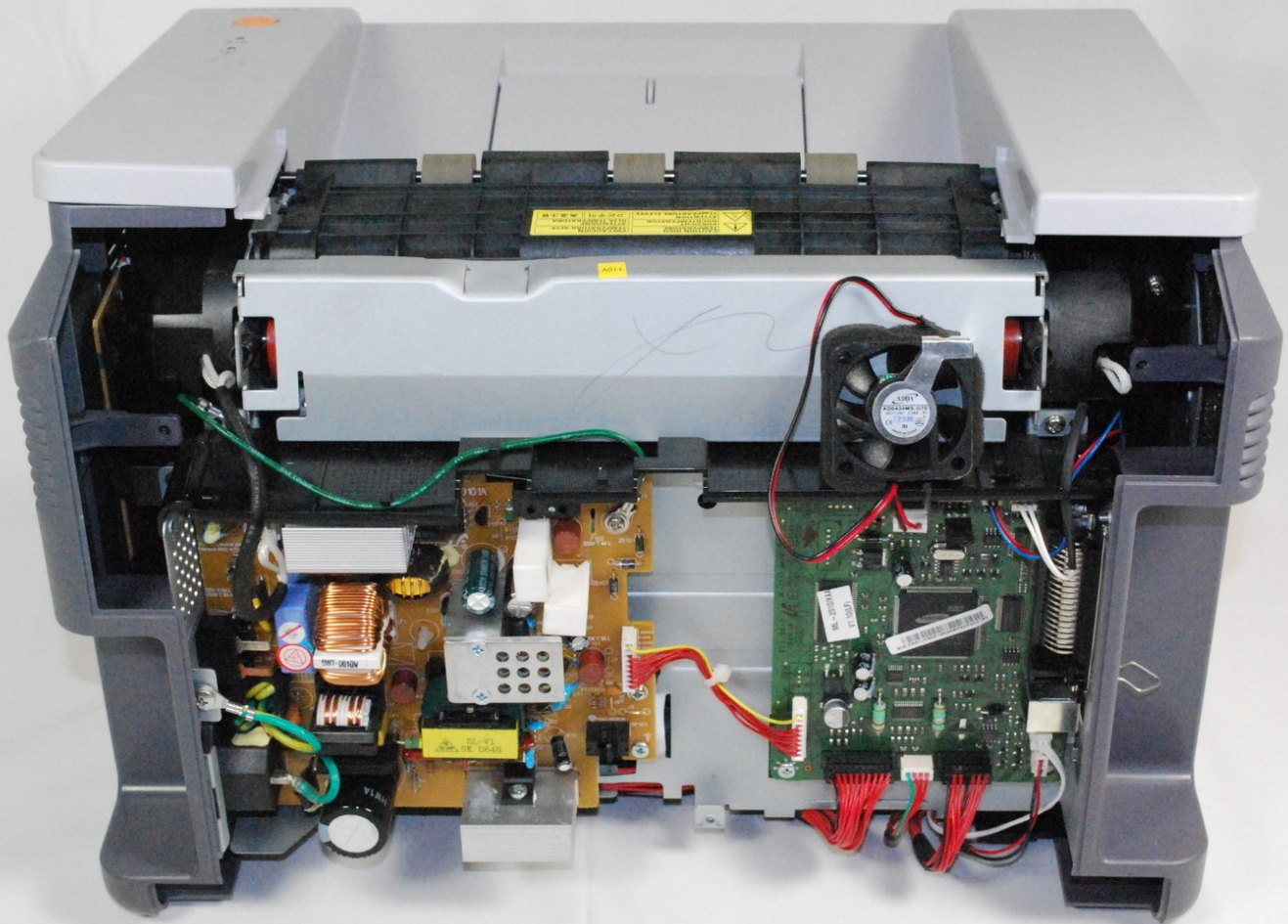




# Removing Samsung ML2510 Back Panel

This guide will help you to remove the printer's rear casing for access to its interior parts.

Written By: bbaustin



---

## INTRODUCTION

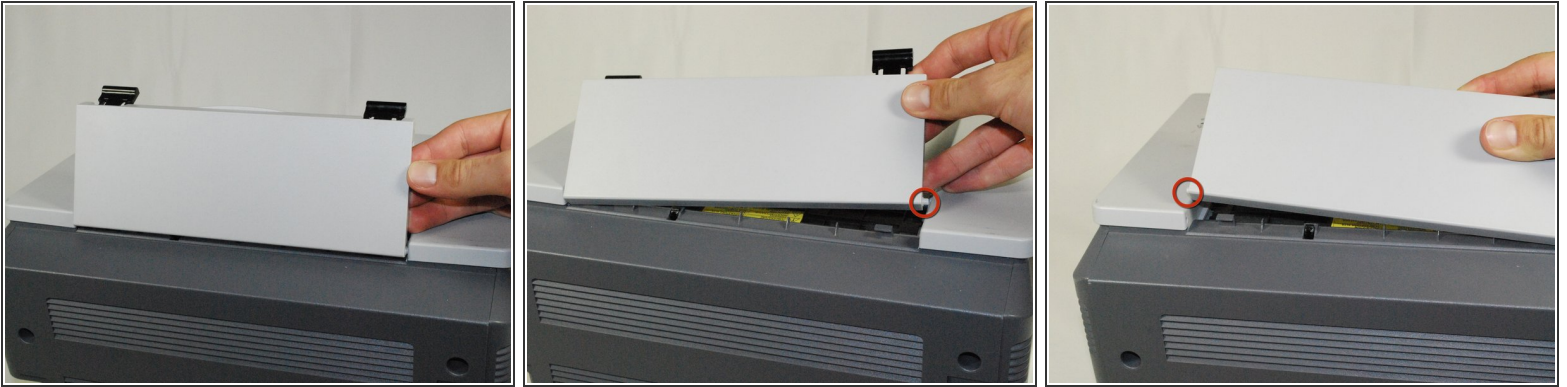
This guide will show how to remove the printer's rear casing to access the interior of the machine.

---

### TOOLS:

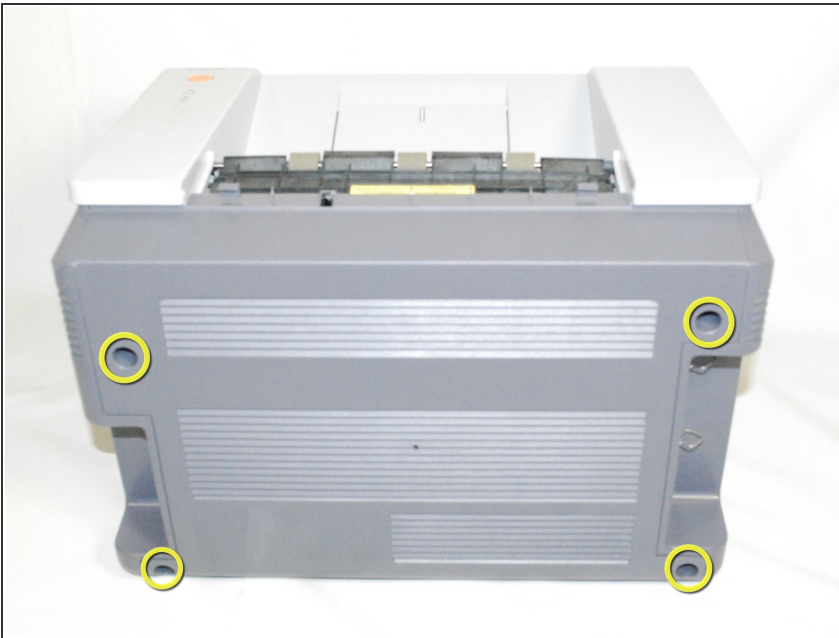
- [Phillips #2 Screwdriver](#) (1)
-

## Step 1 — Back Panel



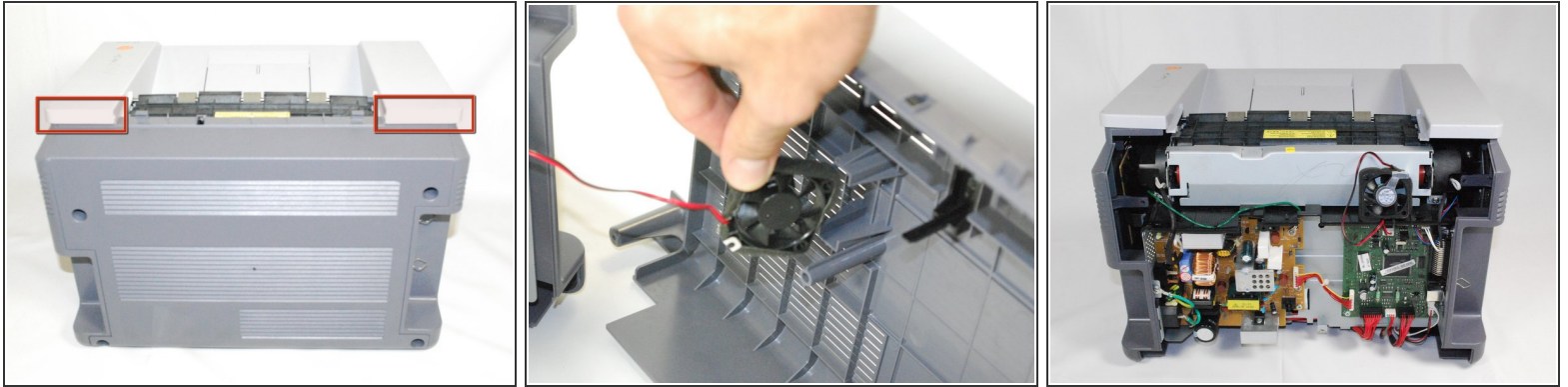
- Remove the hinged top panel by taking the small pins at the bottom of the panel out of their holes.

## Step 2




- Using a Phillips #2 screwdriver, remove the four 1" long, Phillips, PH#2 screws on the back of the printer.

### Step 3



- Gently lift the top panel while simultaneously pulling off the back panel.

 Before pulling out the back panel entirely, make sure to remove the rear cooling fan from its slot.

To reassemble your device, follow these instructions in reverse order.