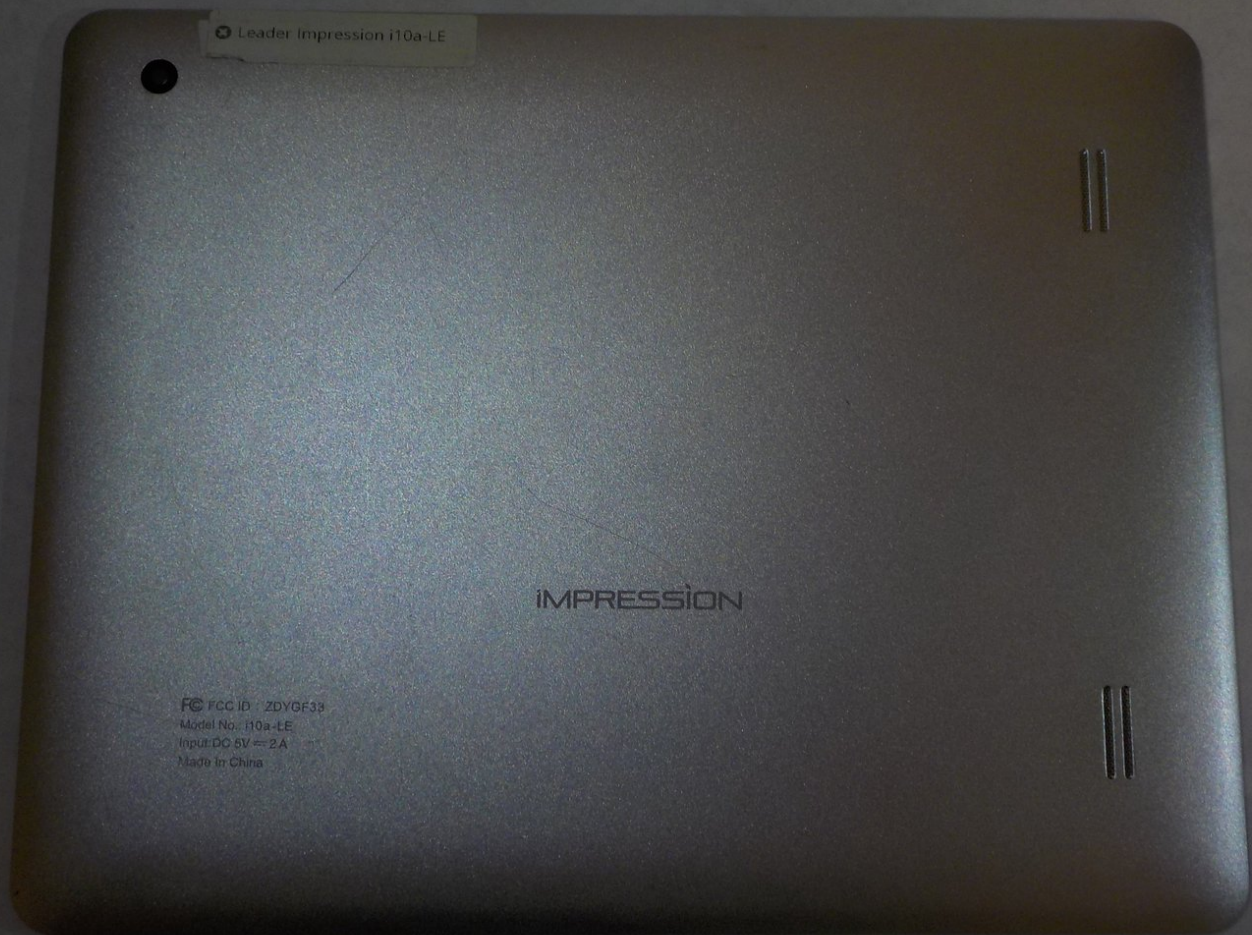




Leader Impression i10A-LE Back Facing Camera Replacement

Replacing the back facing camera to take pictures with your Leader Impression i10A-LE.

Written By: Crystal Dorrian



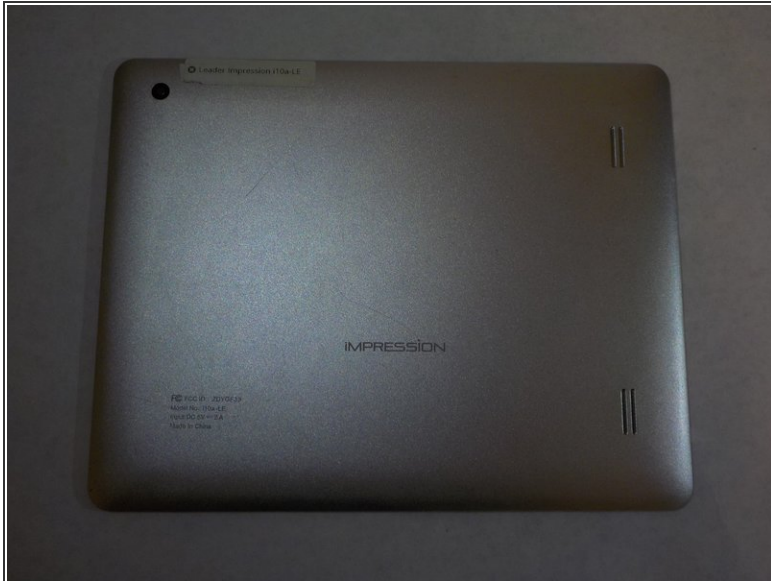
INTRODUCTION

This replacement guide will teach you how to remove and replace the back facing camera to your Leader Impression i10A-LE tablet. This fix can take anywhere from 15-25 minutes.

TOOLS:

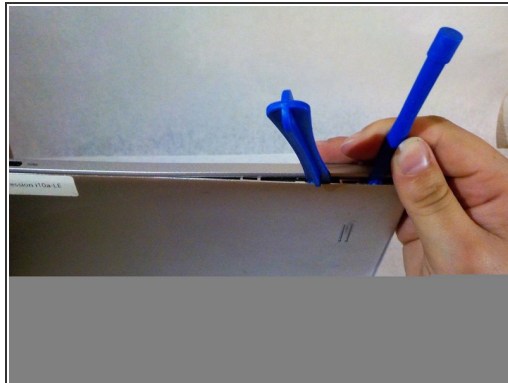
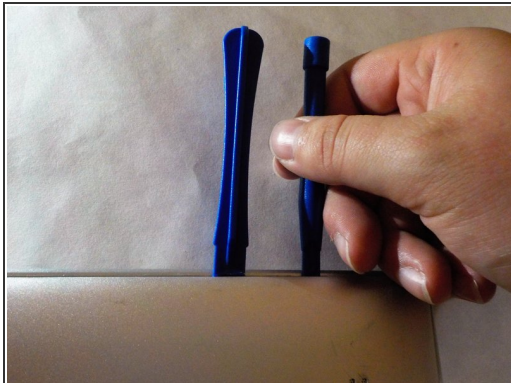
- [iFixit Opening Tools](#) (1)
 - [Tweezers](#) (1)
-

Step 1 — Back Facing Camera



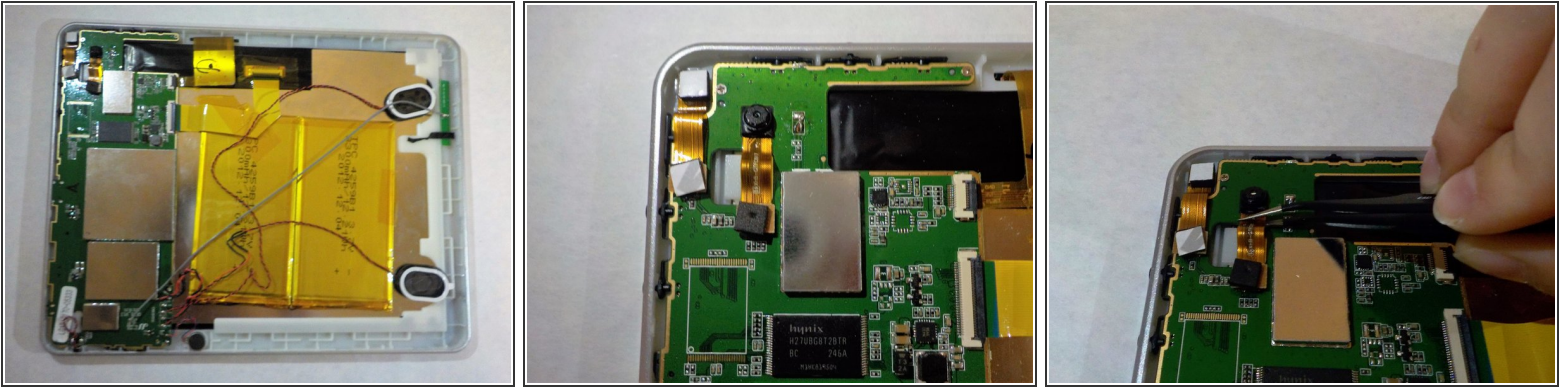
- Start with your Leader Impression i10A-LE with the word "Impression" closest to you and the camera in the top left corner.

Step 2



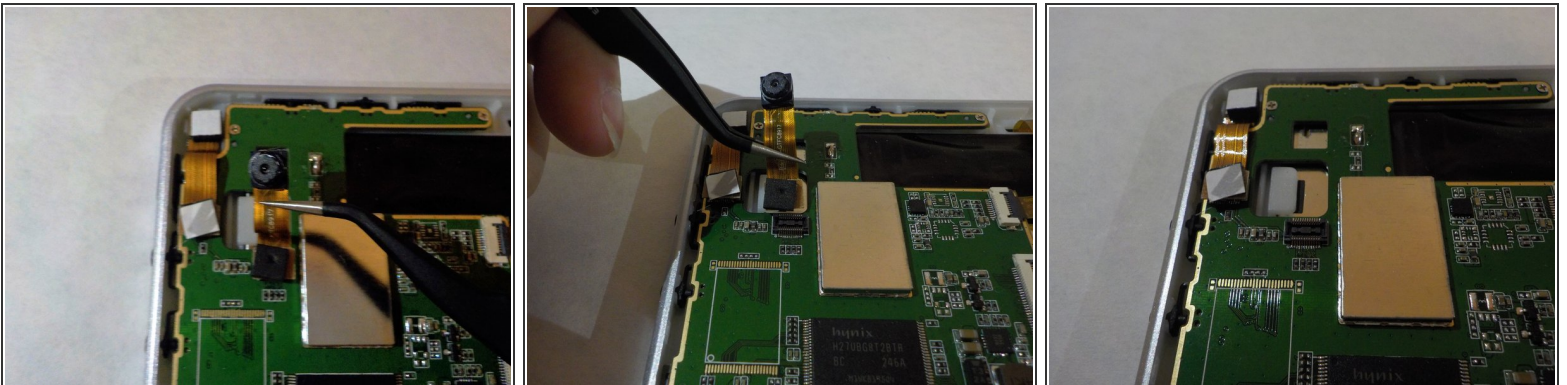
- Start by prying the back off by using plastic opening tools.
- Using the plastic tools slide the flat end into the device.
- Gently pry the back piece until you hear a popping noise.
- Once the back is loose, remove it from the device and set aside.

Step 3



- Once the back is off, locate the back facing camera.
- The camera will be in the top left corner.
- Using the precision tweezers that are bent, gently grab the strip below the camera.
- slowly lift up until the camera lifts from its spot.

Step 4



- Continue slowly lifting with the bent precision tweezers.
- The bottom half of the camera strip will pop out.

To reassemble your device, follow these instructions in reverse order.