



# Blackberry Curve 8320 SIM Card Replacement

This guide shows you how to remove and replace the Blackberry Curve 8320's SIM Card.

Written By: Christopher Aiello



## INTRODUCTION

The guide will show you how to:

- Remove the battery
- Replace the SIM card

## Step 1 — Battery



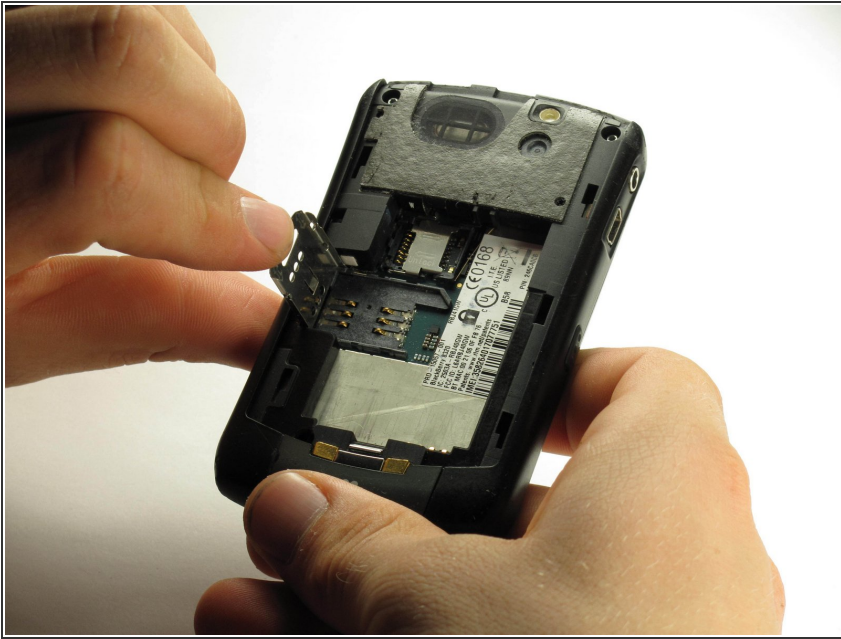
- ① Hold the phone with the back facing you.
- Press the silver tab down and remove the cover.

## Step 2



- Pull up on the top edge of the battery to remove it.

## Step 3 — SIM Card



- Push and slide the bottom-most metal SIM card cover to the left and up to unlock it.
- Remove the SIM card.
- Insert a replacement SIM card, if needed.

To reassemble your device, follow these instructions in reverse order.

This document was last generated on 2019-07-21 01:01:47 PM.