



# Blackberry Curve 8320 microSD Card Replacement

This guide shows you how to install expandable memory in the microSD bay of the Blackberry Curve 8320.

Written By: Christopher Aiello



## INTRODUCTION

This guide will show you how to:

- Remove the battery
- Replace the microSD card

## Step 1 — Battery



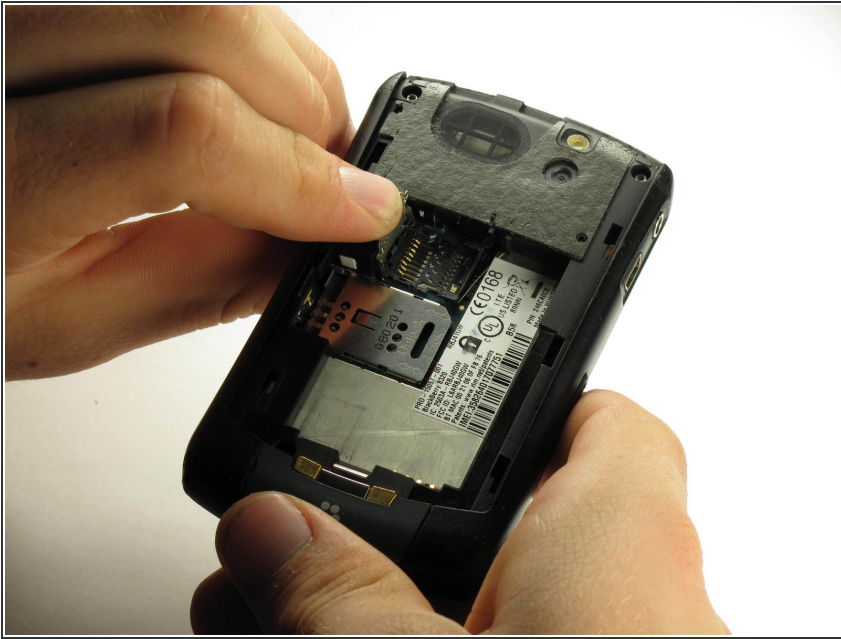
- ① Hold the phone with the back facing you.
- Press the silver tab down and remove the cover.

## Step 2



- Pull up on the top edge of the battery to remove it.

### Step 3 — microSD Card



- Push and slide the topmost metal microSD card cover to the left and up to unlock it.
- Remove the microSD card.
- Insert a replacement microSD card into the slot, if needed.

To reassemble your device, follow these instructions in reverse order.

This document was last generated on 2019-07-22 11:45:27 PM.