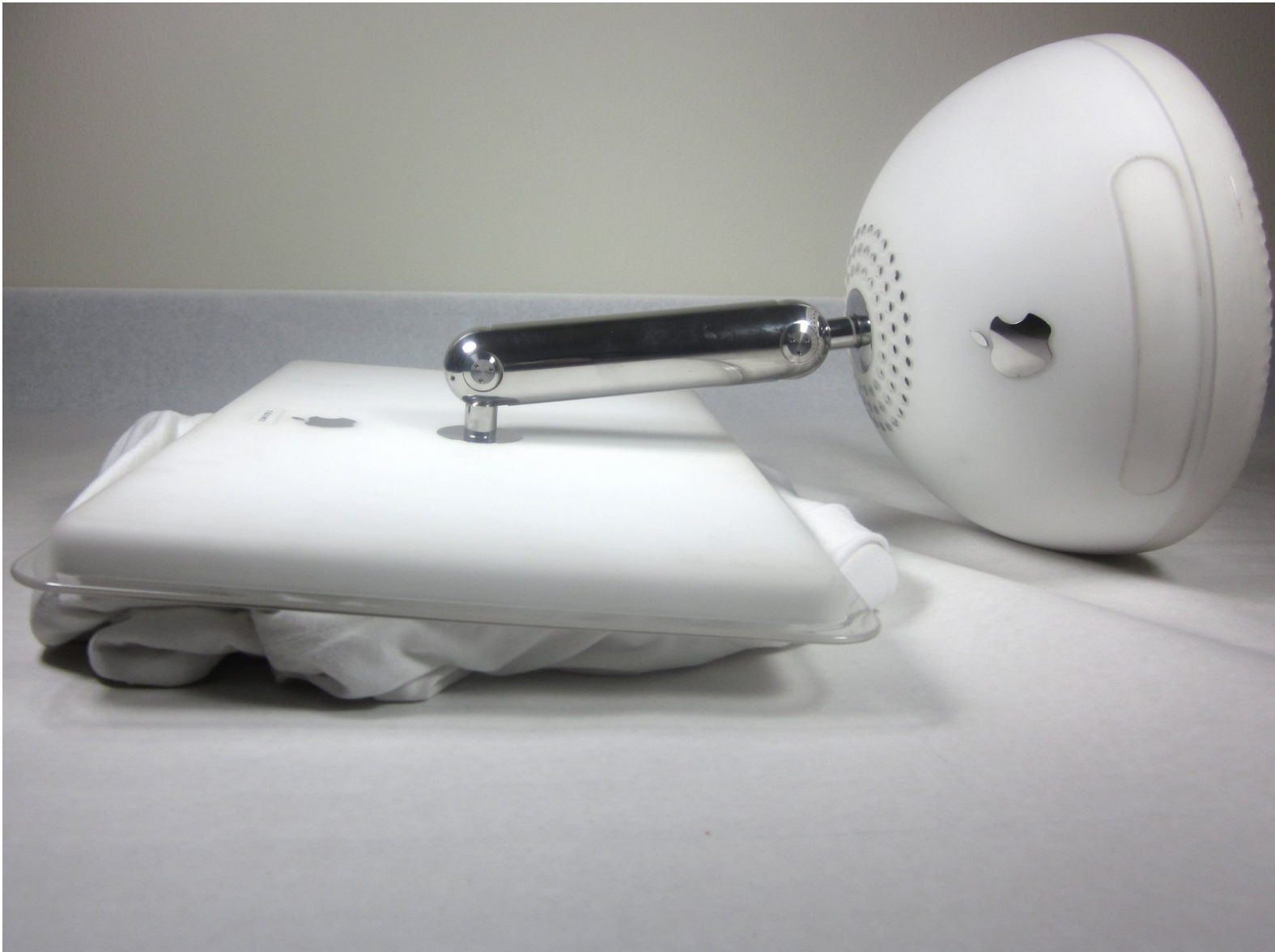




iMac G4 17 800 MHz EMC 1936 Bottom Plate Replacement

How to remove first bottom plate in iMac G4 17 800 MHz EMC 1936.

Written By: David Hunter



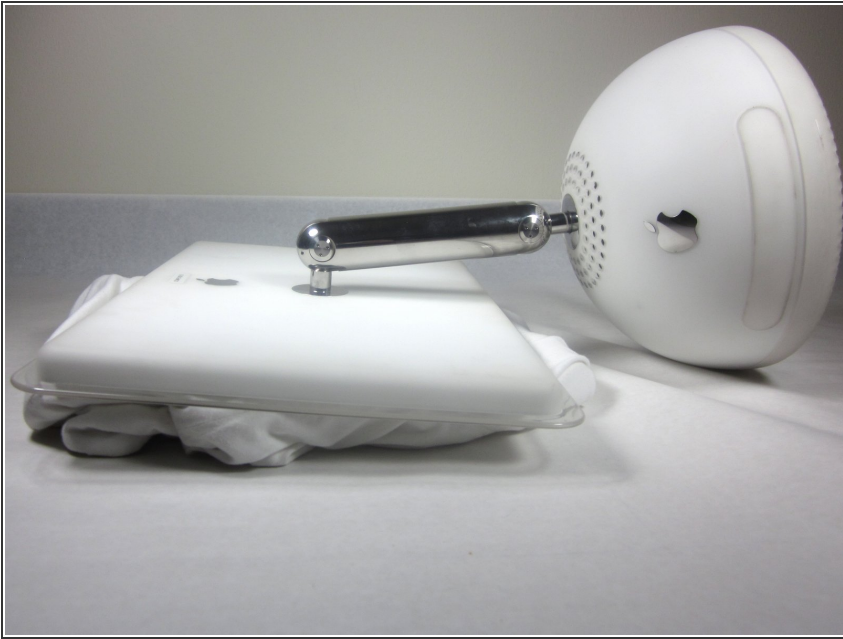
INTRODUCTION

Removing the first bottom plate will reveal the bottom housing, RAM, and airport card.

TOOLS:

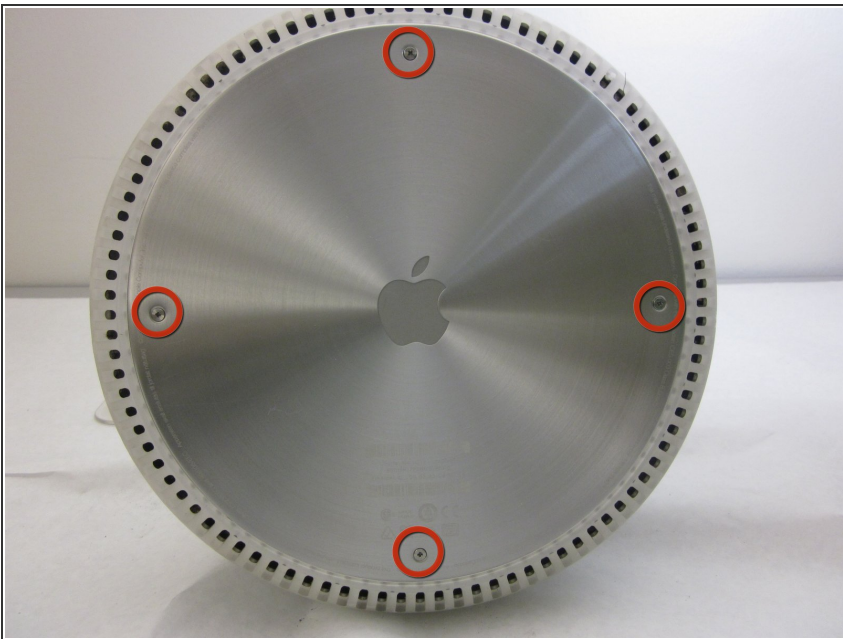
- [Phillips #0 Screwdriver](#) (1)
-

Step 1 — Bottom Plate



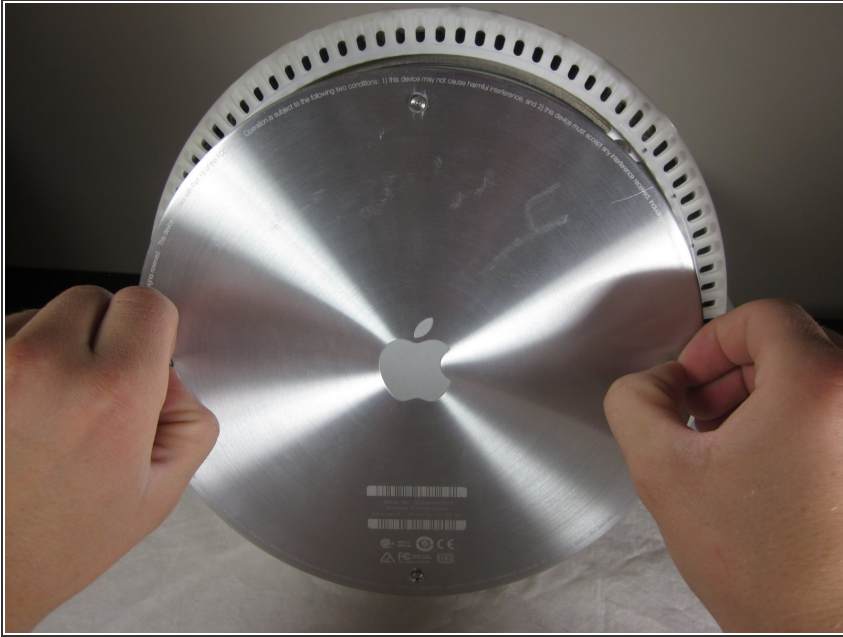
- Unplug all the cables from the computer, including the power cable. Lay the computer face-down, supporting the neck and base with a soft cloth under the screen.

Step 2



- Loosen the four Phillips #0 screws.

Step 3



- Carefully remove the base access panel.

To reassemble your device, follow these instructions in reverse order.