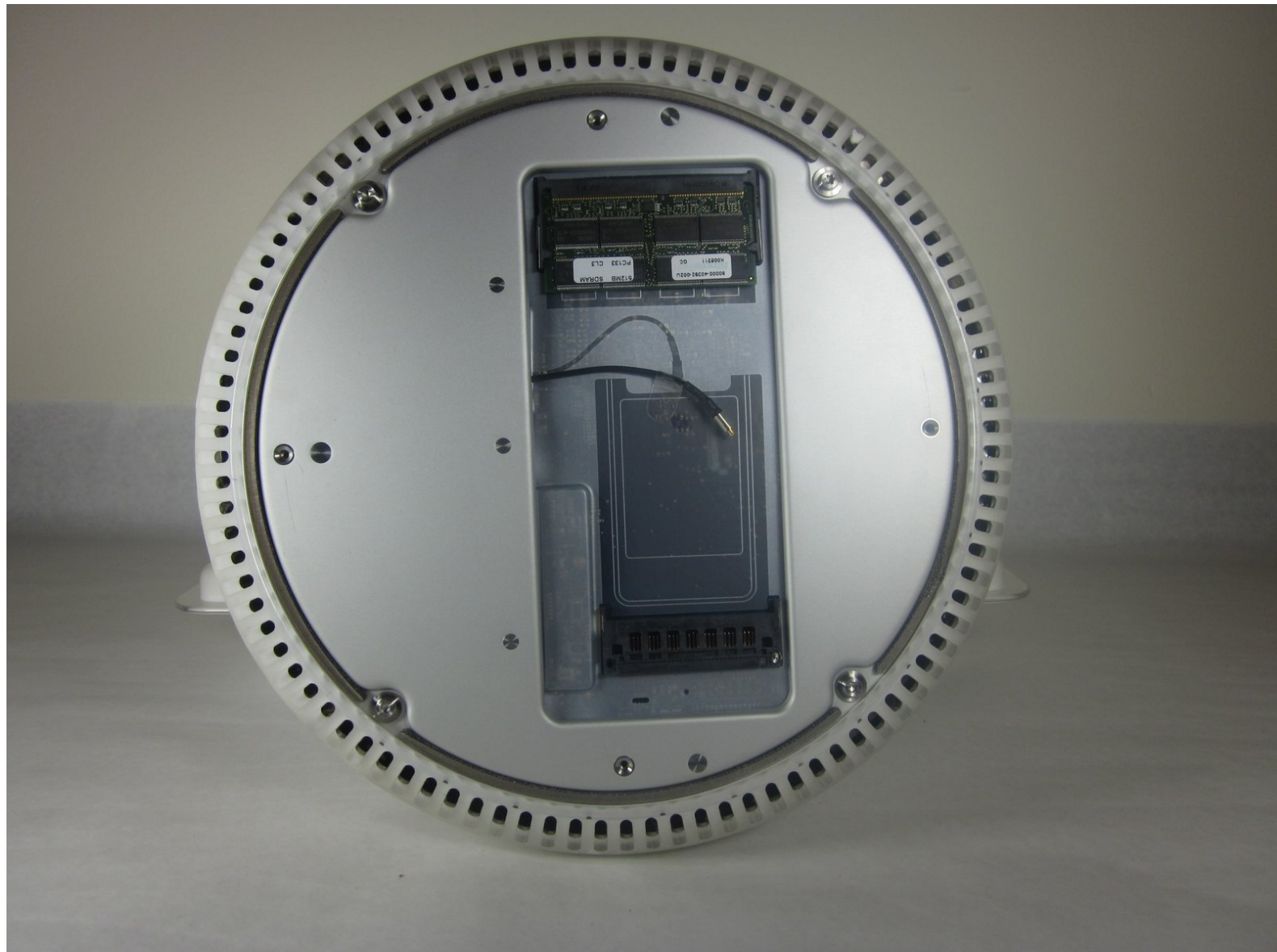




iMac G4 17 800 MHz EMC 1936 Airport Card Replacement

Removing the Airport Card from Computer

Written By: David Hunter



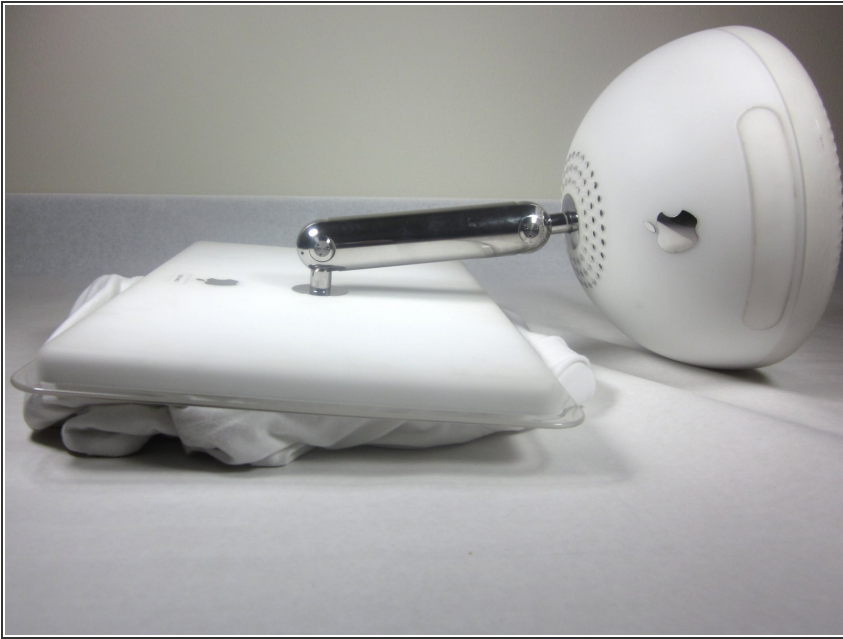
INTRODUCTION

Remove all electrical wires from the computer, and lay the computer flat on its screen. The computer should rest on a smooth, padded surface.

TOOLS:

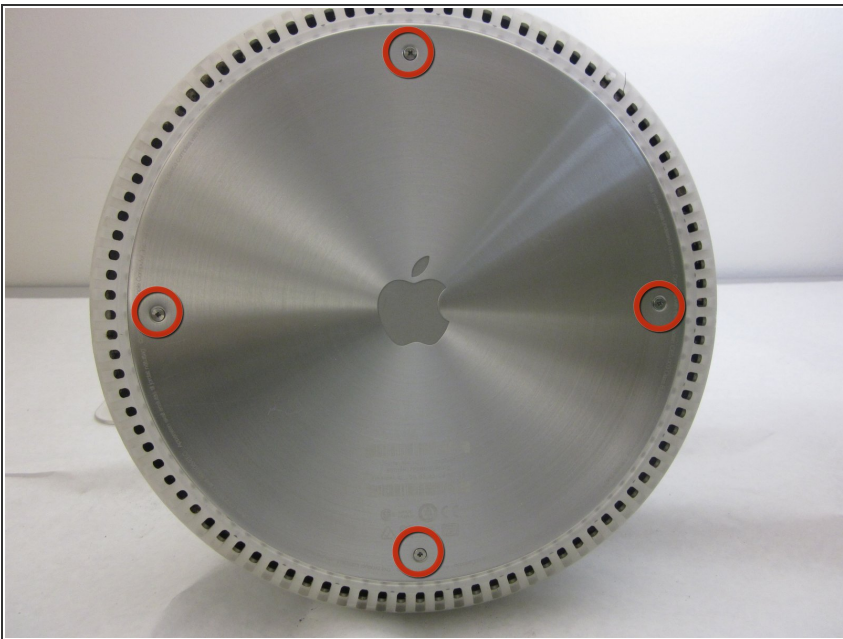
- [captive screw](#) (1)
 - [Phillips #0 Screwdriver](#) (1)
-

Step 1 — Bottom Plate



- Unplug all the cables from the computer, including the power cable. Lay the computer face-down, supporting the neck and base with a soft cloth under the screen.

Step 2



- Loosen the four Phillips #0 screws.

Step 3



- Carefully remove the base access panel.

To reassemble your device, follow these instructions in reverse order.

This document was last generated on 2019-01-15 08:36:33 AM.