



# iMac G4 17 800 MHz EMC 1936 Bottom Plate Housing Replacement

Remove bottom housing

Written By: Justin



---

## INTRODUCTION

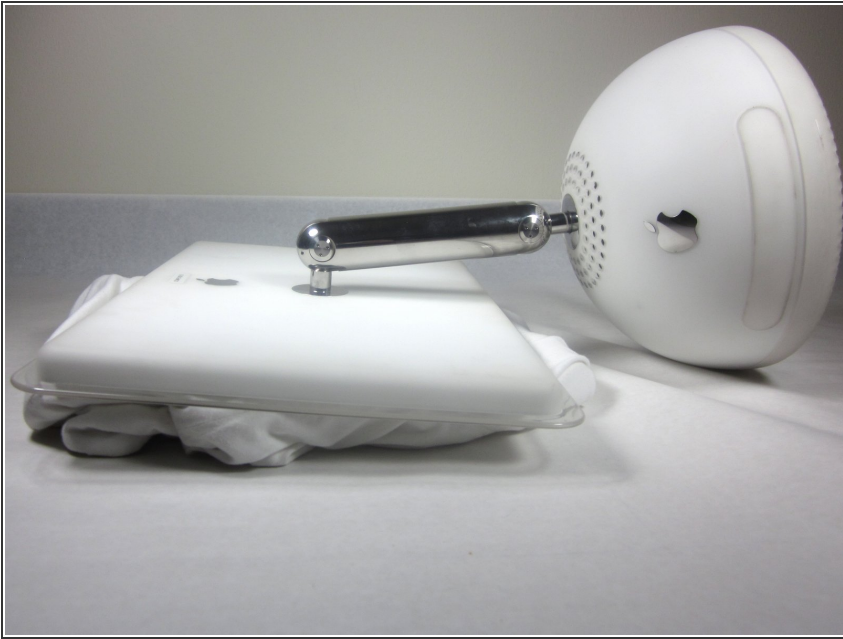
Remove bottom housing to reveal the inside of the iMac.

---

### TOOLS:

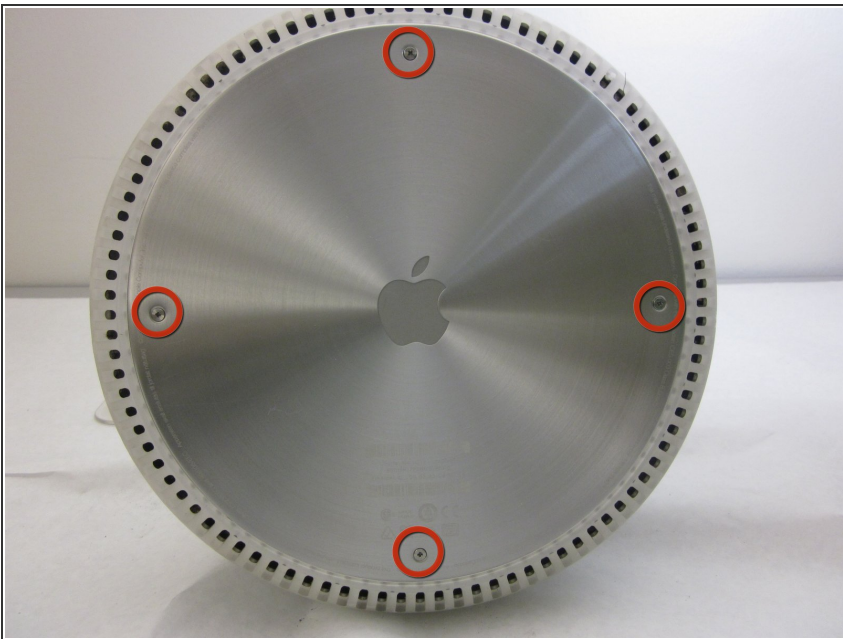
- [T15 Torx Screwdriver](#) (1)
-

## Step 1 — Bottom Plate



- Unplug all the cables from the computer, including the power cable. Lay the computer face-down, supporting the neck and base with a soft cloth under the screen.

## Step 2



- Loosen the four Phillips #0 screws.

### Step 3



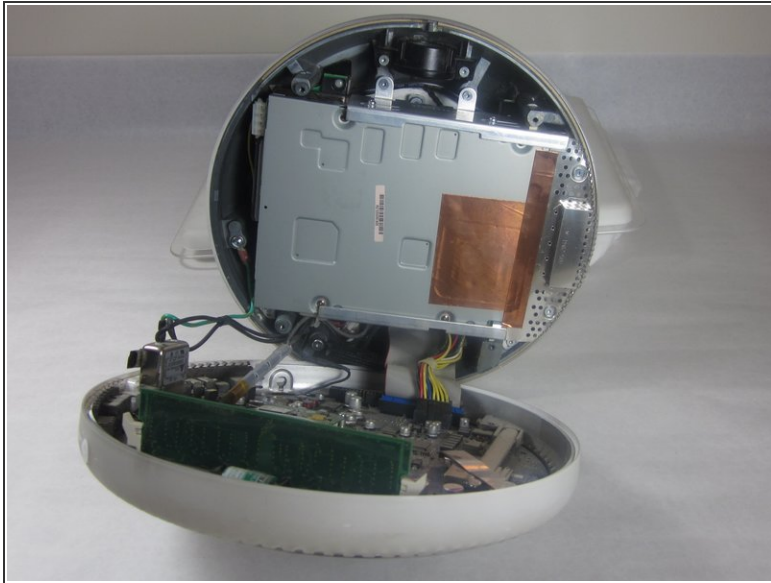
- Carefully remove the base access panel.

### Step 4 — Bottom Plate Housing



- Remove the four 25mm T-15 screws.

## Step 5



- Open the housing plate.
- ⚠ Be gentle with the wires still connected to the logic board so as not to ruin the cables.
- A fixed plug connector between the logic board and upper unit will cause some resistance. Pull gently but firmly.

To reassemble your device, follow these instructions in reverse order.