



# Sony Clie PEG-TG50 Battery Replacement

This guide will show how to remove and replace the battery for the Sony Clie PEG-TG50. Use this to replace and view the device battery.

Written By: Alyson



## INTRODUCTION

Before taking apart your device, make sure that you have the proper tools to do so. We used a small screwdriver to remove the screws because they are so tiny. Also, make sure that you are working in an area that is clean and clear of debris so you can see all the parts of your device as you take it apart.

---



### TOOLS:

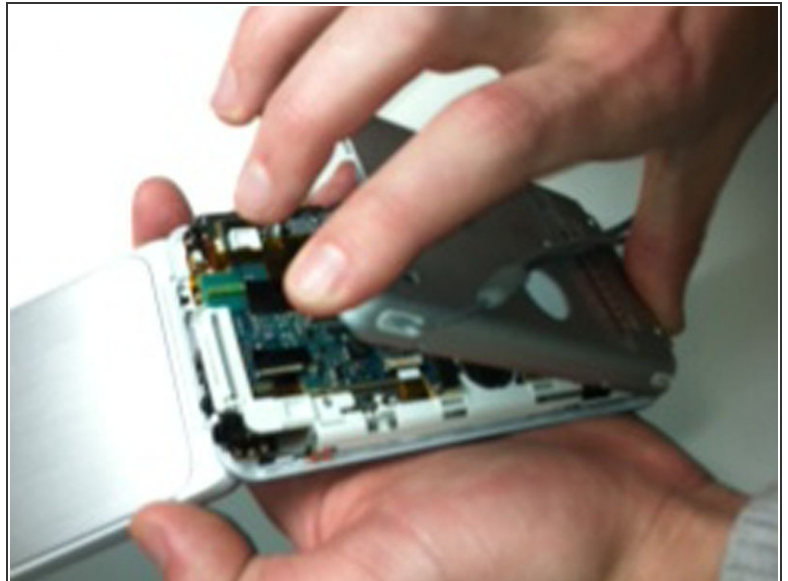
- [Phillips #00 Screwdriver](#) (1)
-

## Step 1 — Battery



- Remove screws on the black plate and the side of the device.

## Step 2



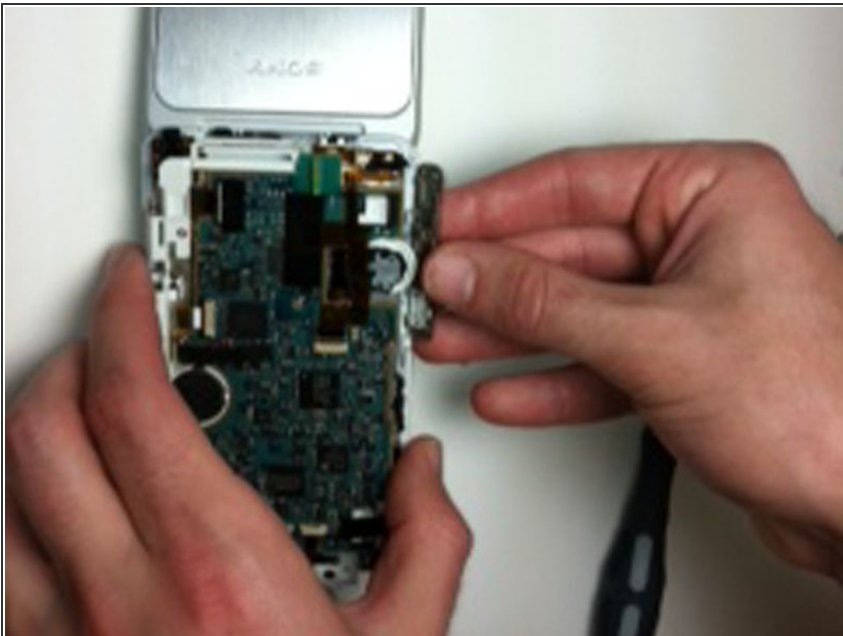
- Remove the small top grey piece from the back plate
- Detach the back plate from the rest of the device.

### Step 3



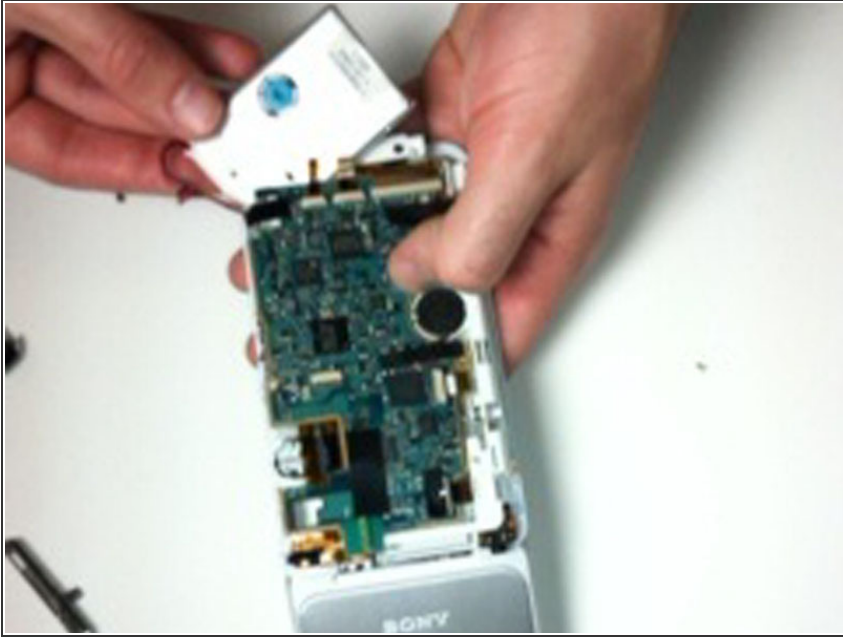
- Loosen and remove the screws on the motherboard.

### Step 4



- Remove volume rocker from side panel of device.

## Step 5



- Loosen the battery from the motherboard.
- Replace battery with a new one.

## Step 6



- Insert the new battery into the device.

To reassemble your device, follow these instructions in reverse order.