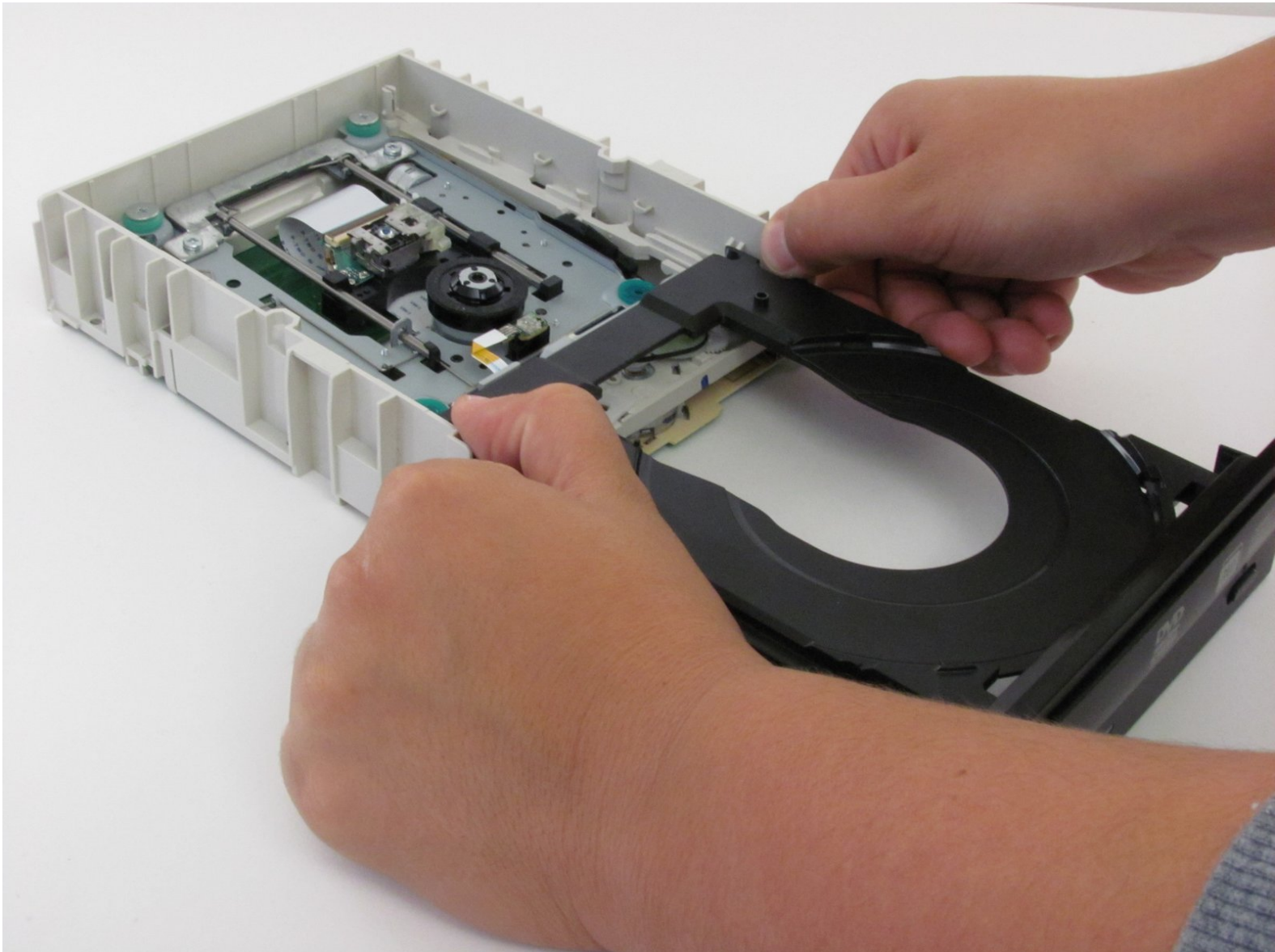




Lite-On LightScribe SHM-165H6S Disc Tray Replacement

This guide is for replacing the disk tray for the drive.

Written By: James Biggs



INTRODUCTION

If the disc tray has fallen out of alignment or has broken, you will need to replace it.

TOOLS:

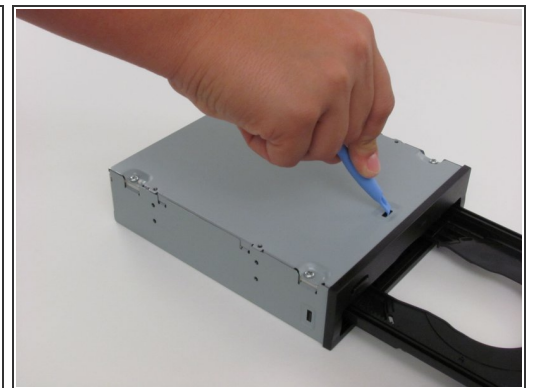
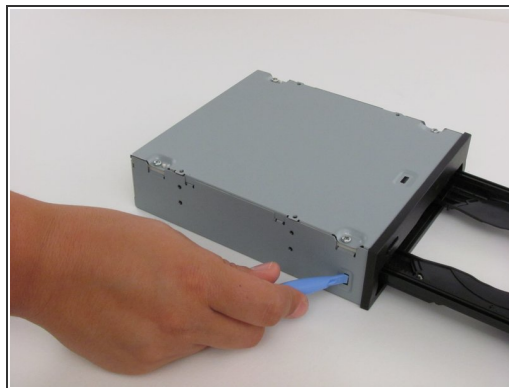
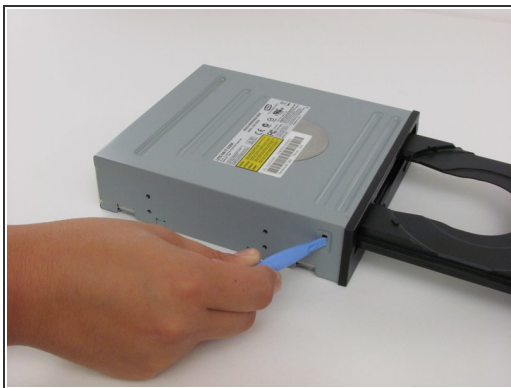
- [Paper Clip](#) (1)
 - [Phillips #2 Screwdriver](#) (1)
 - [iFixit Opening Tools](#) (1)
-

Step 1 — Chassis



- Insert an open paper clip into the small hole on the left side of the faceplate.
- After the tray opens, extend it fully.

Step 2



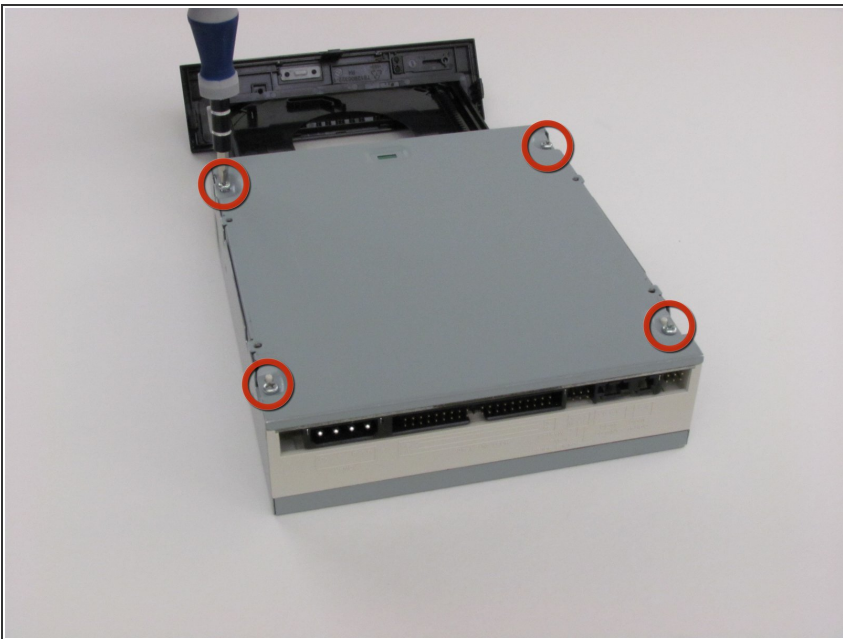
- Use an opening device to push in the black tabs on the left, right and bottom of the outer chassis to unhook the faceplate.

Step 3



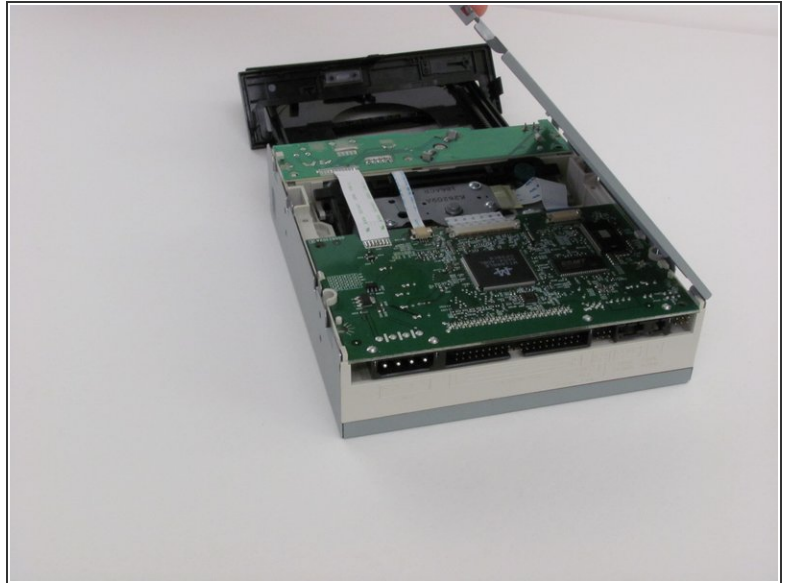
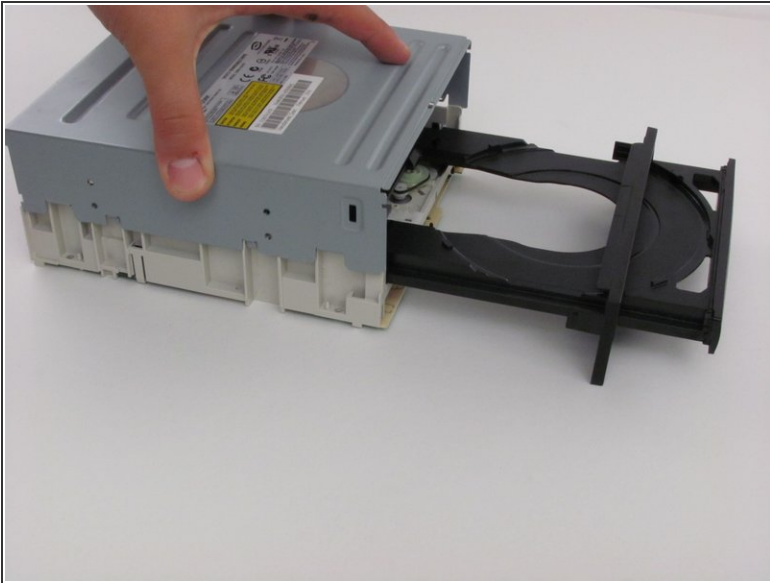
- Pull the faceplate away from the main chassis.

Step 4



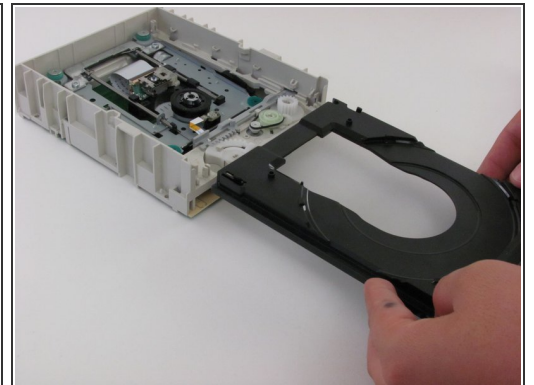
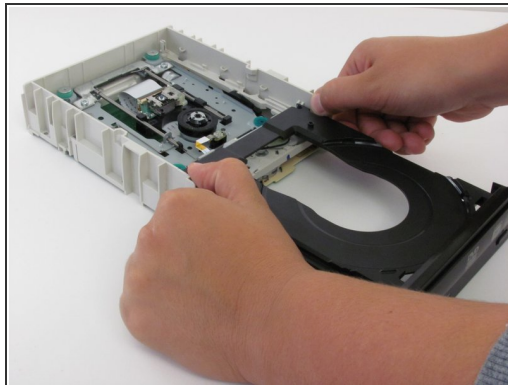
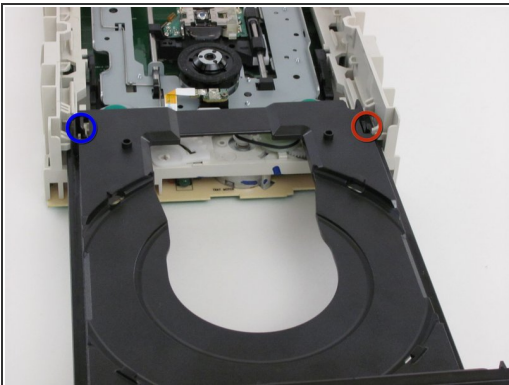
- Unscrew the four 8.5 mm screws on the bottom chassis using a Philips #2 screwdriver.

Step 5



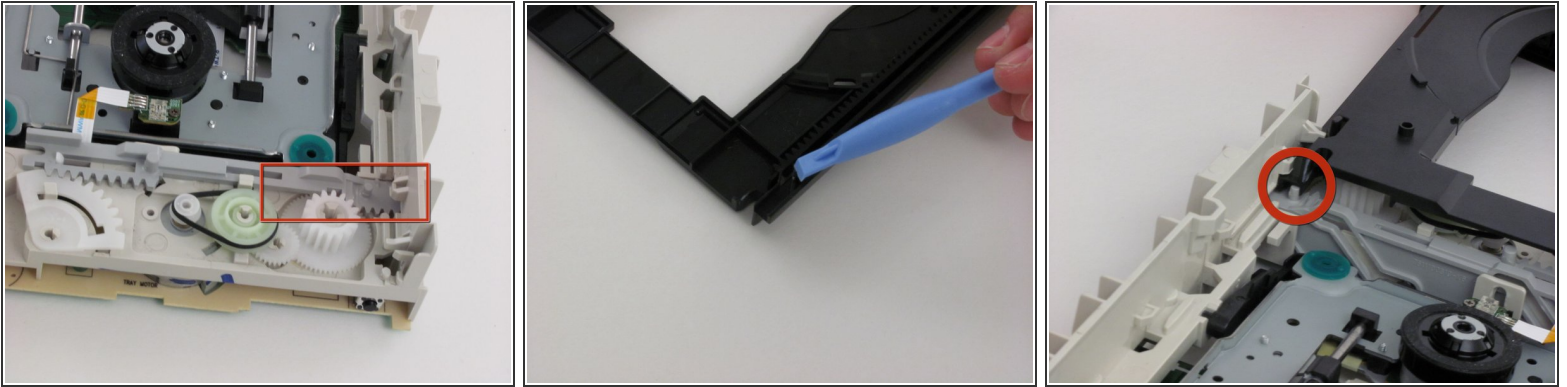
- Lift the top and bottom chassis straight up in order to remove them.

Step 6 — Disc Tray



- Extend the tray fully.
- Push the tab on the right side to the left.
- Push the tab on the left side to the left.
- Remove the tray carefully.

Step 7



- Guide the replacement tray under the beige tabs.
- Make sure the grey piece is slid to the right, so the grey nob is under the right-hand groove of the tray.
- Check to see that the tray extends and closes smoothly.

To reassemble your device, follow these instructions in reverse order.

This document was last generated on 2019-07-14 02:15:02 PM.