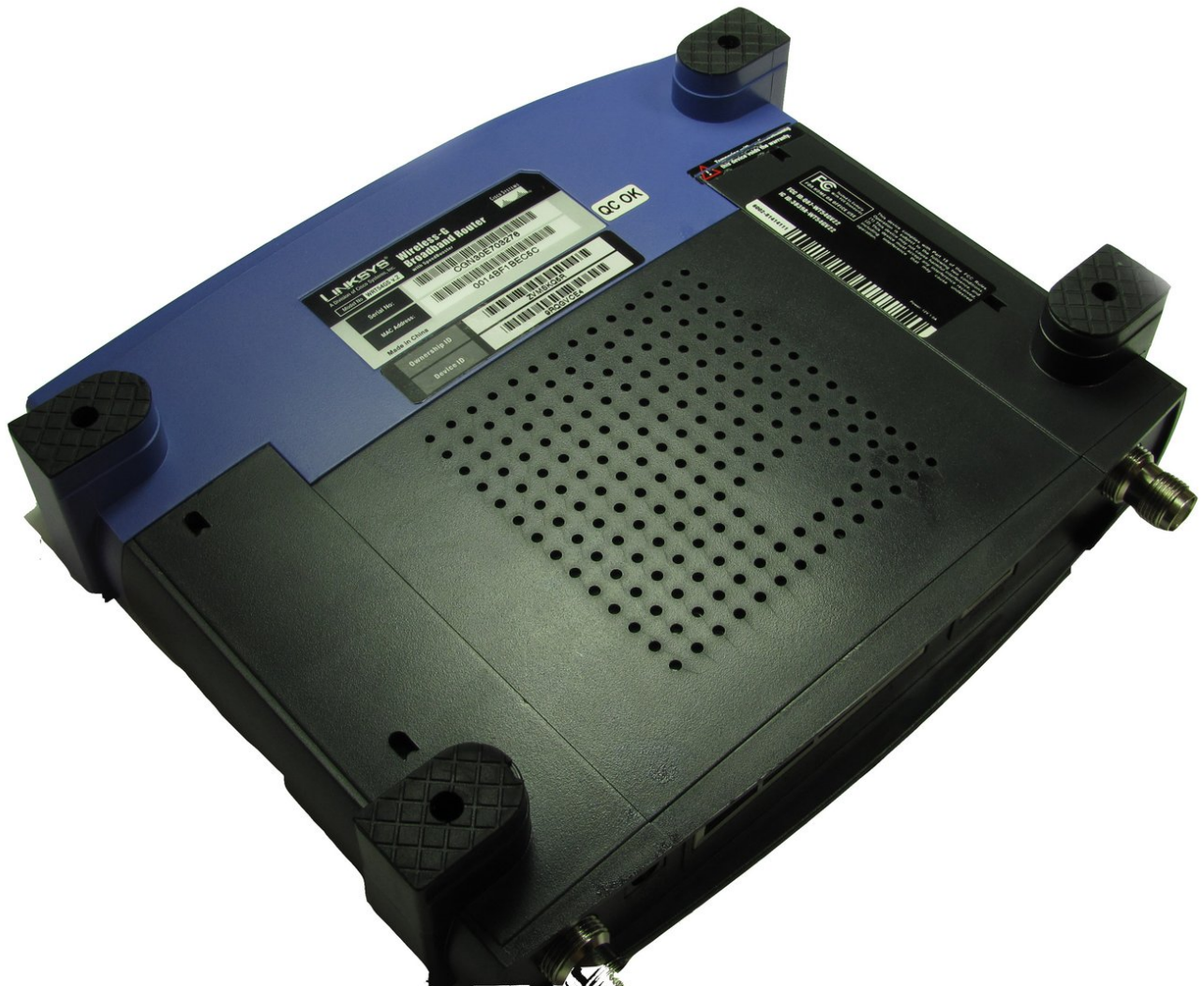




# Linksys WRT54GS v2 Front Case Replacement

In this guide you will remove the router's front case.

Written By: Allian Roman



---

## INTRODUCTION

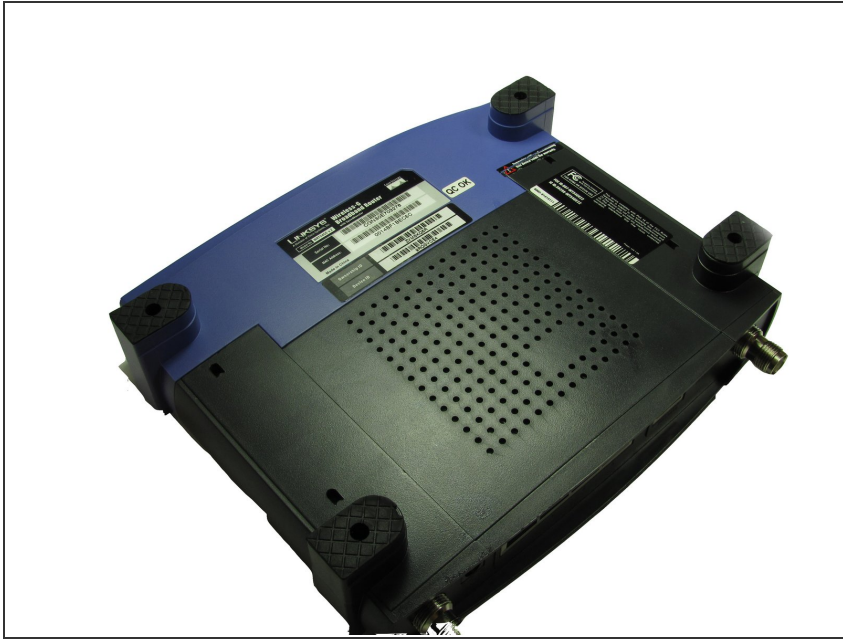
In this guide you will remove the router's front case and begin to have access to the router's internal components.

---

### TOOLS:

- [Metal Spudger](#) (1)
  - [Phillips #2 Screwdriver](#) (1)
  - [iFixit Opening Tools](#) (1)
-

## Step 1 — Front Case



- Turn the router over so that all four of its feet are facing upwards.

## Step 2



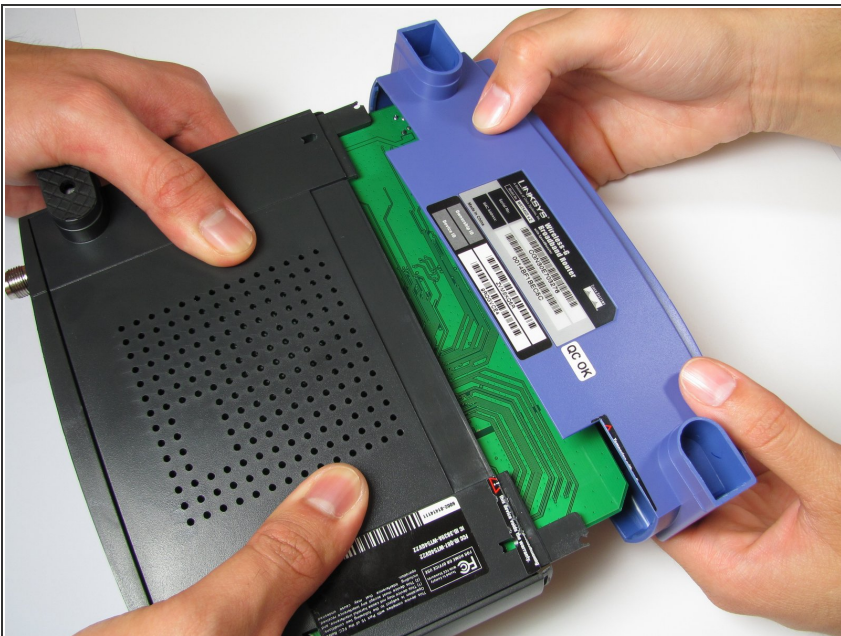
- Remove the rubber inserts inside the the two purple feet located on the router's front case.
- This may be a challenge, so try the following two methods:
  - Use a plastic opening tool. Insert the flat end of the tool into the seam and slowly pry the rubber feet out.
  - Use a metal spudger. Insert the point of the metal spudger directly into the hole of the rubber feet and pry the insert out.

### Step 3



- Use a Phillips #2 Screwdriver to remove the two 5.8 mm screws holding the front case to the motherboard.

### Step 4



- Squeeze the sides of the router's backcase inward and pull off the purple front case. It is helpful to have a second person assist you for this step.

To reassemble your device, follow these instructions in reverse order.