



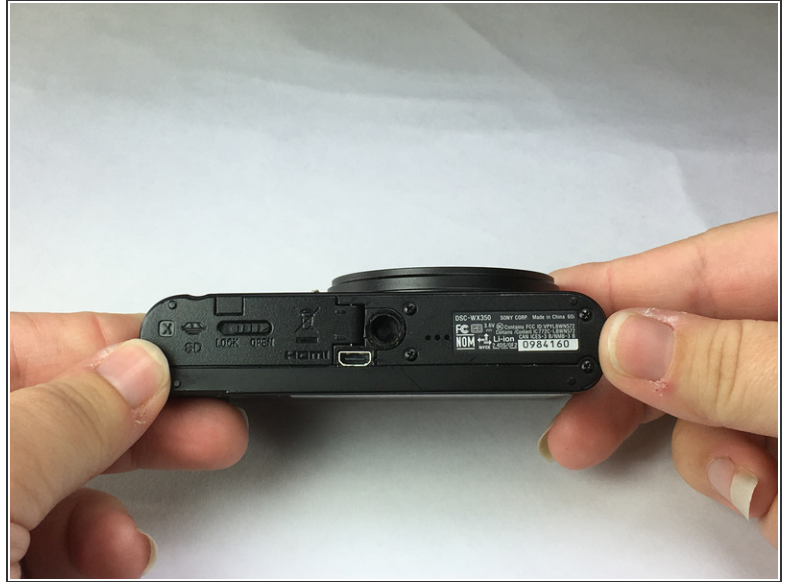
# Sony Cyber-shot DSC-WX350 Battery Replacement

This guide is a step-by-step instruction manual on how to replace the battery in this camera.

Written By: Jit Banerjee



## Step 1 — Battery



- Turn the camera upside down, with the camera screen facing toward you, find the switch labeled "Lock" and "Open".
- Move the switch to the position labeled "Open"
- ⚠ Be careful, the hinge will quickly swing upward so to avoid damage, hold the end of the switch

## Step 2



- Insert the battery into the camera

To reassemble your device, follow these instructions in reverse order.

This document was last generated on 2017-09-25 02:08:26 PM.