



# Toy Farm House Teardown

This will break down the process of tearing down a toy farm house.

Written By: JOVAN CALDERON



---

## INTRODUCTION

This will break down the process of tearing down a toy farm house.

---

### TOOLS:

- [Phillips #0 Screwdriver](#) (1)
-

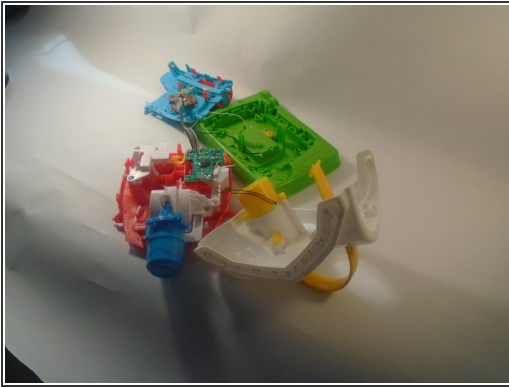
**Step 1 — Front, side, and back of the house.**

- This is the toy farm house that will be torn down.

**Step 2 — Side and bottom of the house.**

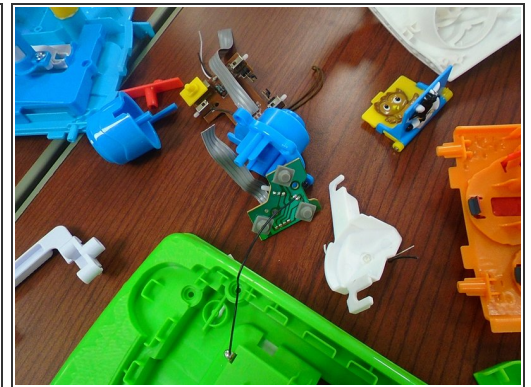
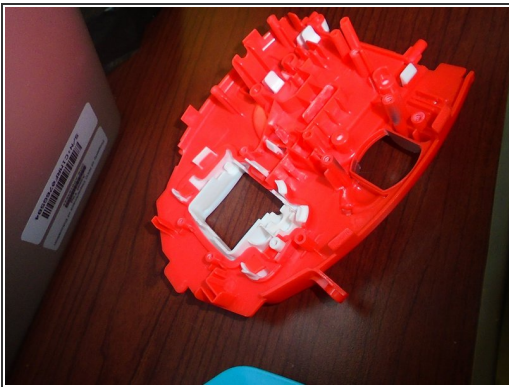
- This is the front and back of the toy houses.

### Step 3 — Teardown



- Unscrew all screws on the outside and inside and the farm house will end up like this.

### Step 4 — Teardown from The Inside.



- After the teardown from the outside, you remove the screws from the inside, and cut the electronic wires, disabling the ability to have it working.