



LG G5 Front Panel Assembly

This guide will give instructions on how to remove the front panel assembly from the body of the phone.

Written By: Joshua Zalmanowitz



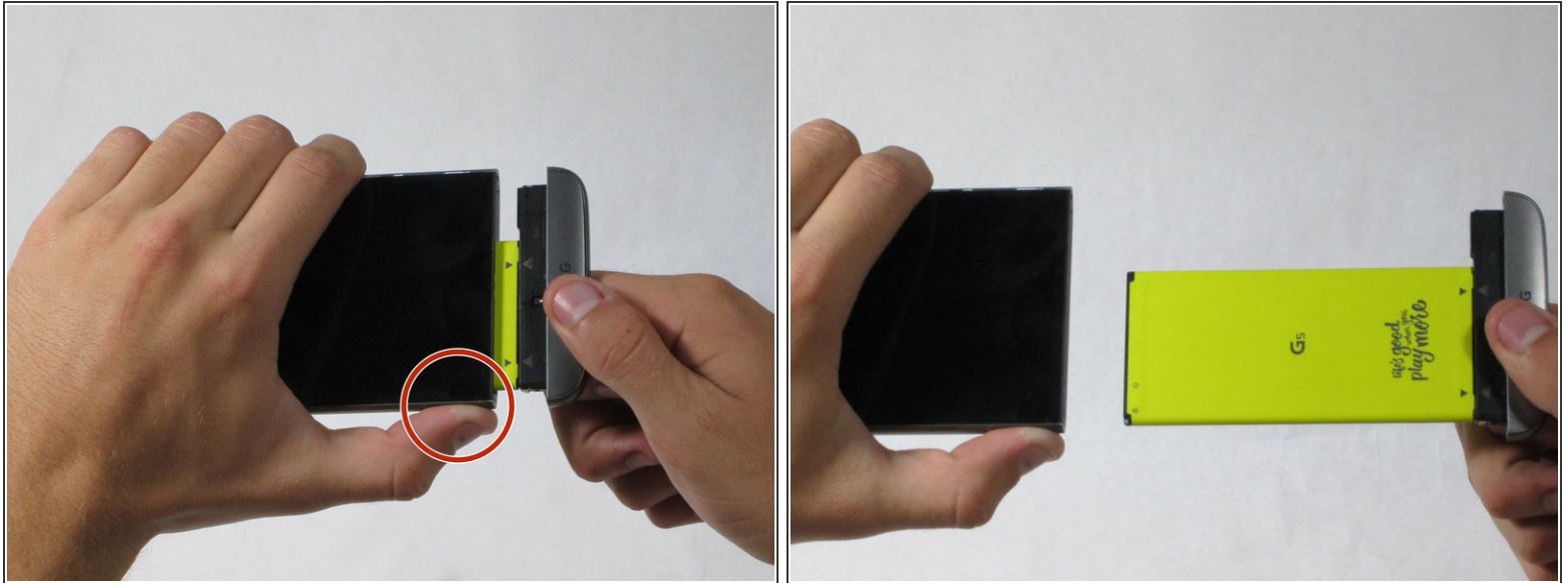
INTRODUCTION

Use this guide to remove your LG G5's front panel assembly. This involves separating the screen from the body of the phone. If you are trying to replace any components within the LG G5, you'll need to follow this guide first!

TOOLS:

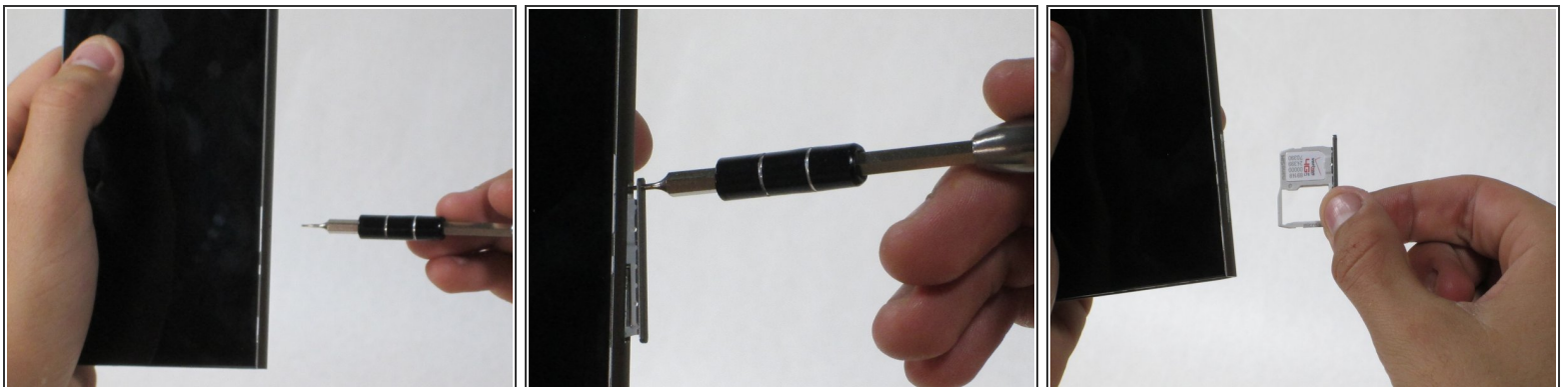
- [Spudger](#) (1)
 - [Phillips #00 Screwdriver](#) (1)
 - [iFixit Opening Tools](#) (1)
 - [SIM Card Eject Tool](#) (1)
-

Step 1 — Front Panel Assembly



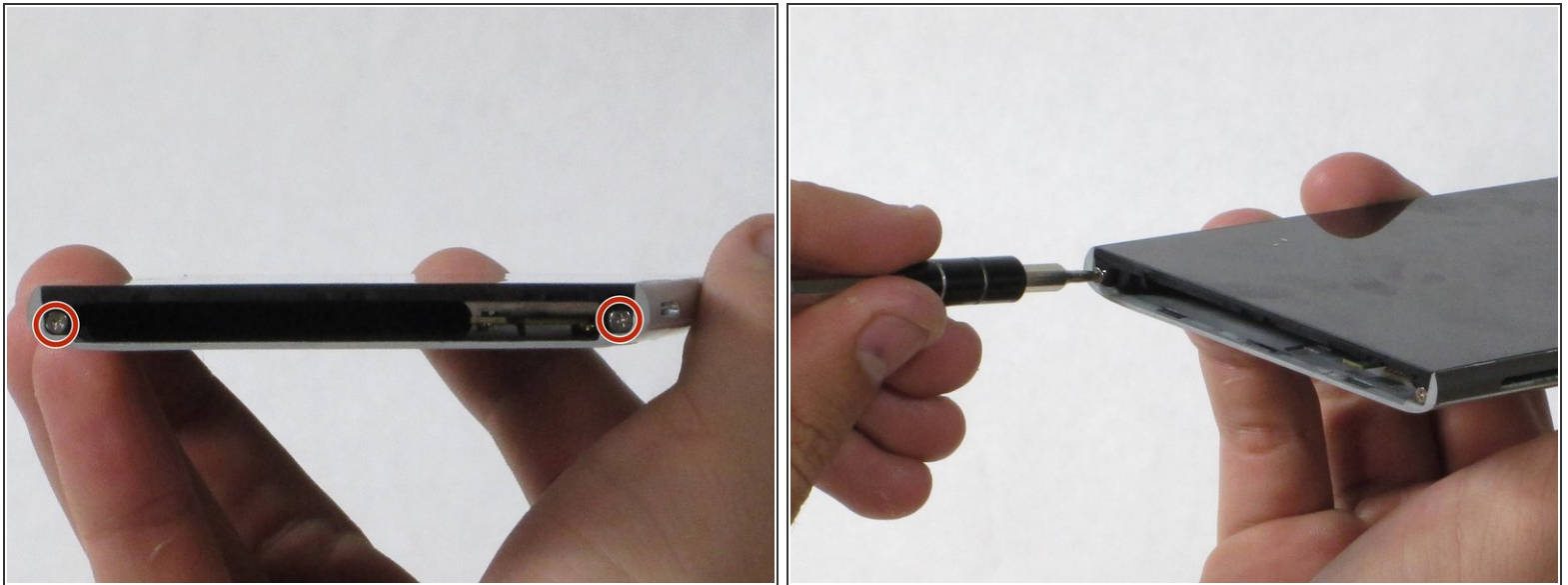
- While holding the battery release button, pull the bottom end of the phone out of the body.

Step 2



- Insert the sim card eject tool (0.8mm sim card eject head) into the small hole on the sim card tray.
- Press inward with some force to eject the tray.
- Pull the sim card tray out of the phone.

Step 3



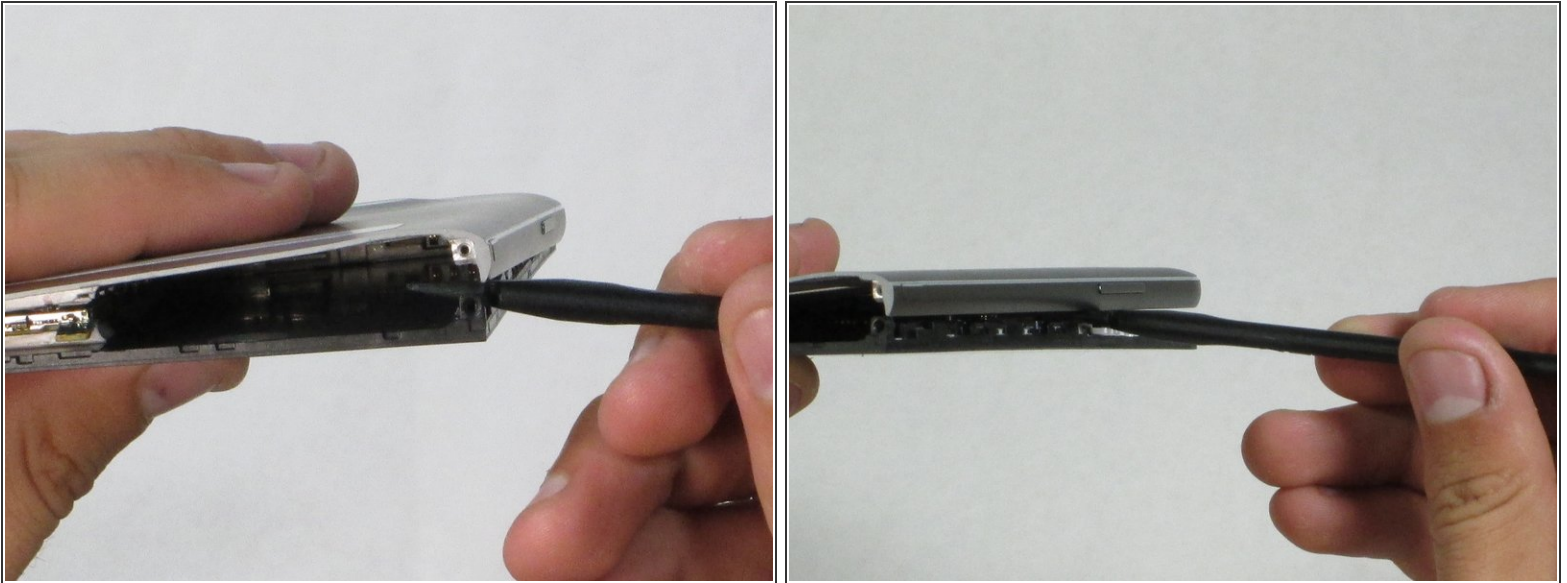
- Remove the two 5.5mm Phillips #00 screws from the base of the phone.

Step 4



- Insert the plastic opening tool into the seam between the glass screen and the metal body.
- Pry the glass from the body only a slight amount.

Step 5



- Insert the Spudger into the now open space between the body and screen.
 - Push inward to separate the screen even more.
 - Slowly slide the nylon spudger up the edge the phone till the screen pops out of the body.
- When putting the screen back in, press the edges down from the top of the phone to the bottom. The screen should "pop" into place.

Step 6



- Peel the screen away from the body. The two parts should be completely separated.

Now you can access all the inner components of the phone!

To reassemble your device, follow these instructions in reverse order.