



# Boosted Board 1st Generation Remote Battery Replacement

Remove and replace the battery from your Boosted Board 1st Generation hand remote.

Written By: Kevin Manko



---

## INTRODUCTION

There is nothing more irritating than halfway through your ride your remote dies. Even though today's battery technology keeps improving, batteries eventually die. Luckily batteries are relatively easy to replace.

This guide will instruct you how to properly disassemble your remote and replace the battery. Keep in mind the area around scroll wheel has levers and moving parts inside, so be cautious while opening and closing the remote.

---

### TOOLS:

- [Soldering Iron](#) (1)
  - [Phillips #0 Screwdriver](#) (1)
-

## Step 1 — Remote Battery



**⚠** Before disassembling your remote, be sure it is powered off.

- Remove the four 17.57mm screws from the bottom of the case with a PH0 screwdriver.

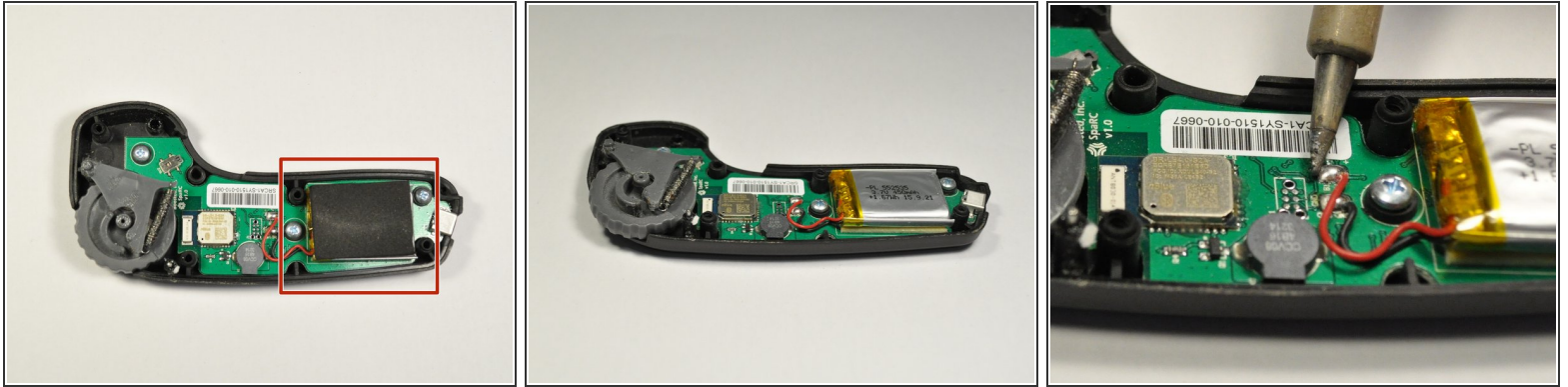
## Step 2



- Carefully separate the two halves of the casing by pulling them apart at the seam.

**i** Be sure to keep the scroll wheel, lever and buttons attached to the housing.

## Step 3



- Remove the rectangular black adhesive foam on top of the battery by peeling it away from the battery.
- Desolder the battery connections from the circuit board.
- Replace the dead battery with a new 3.7 volt lithium polymer battery.
- ⓘ Refer [here](#) for more information how to desolder the battery.

To reassemble your device, follow these instructions in reverse order.