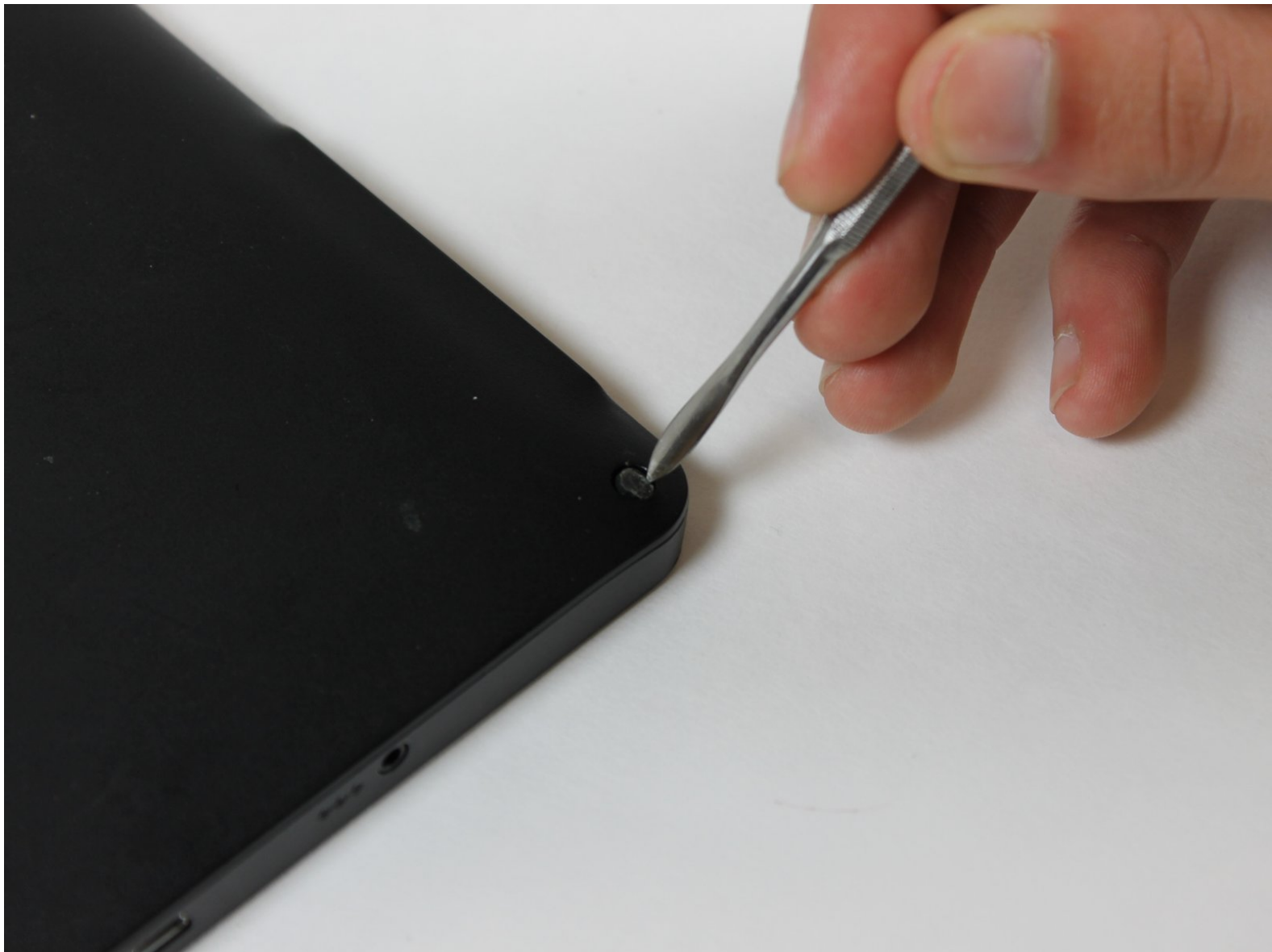




# Pandigital Super Nova Battery Replacement

How to replace the battery of your Pandigital Super Nova.

Written By: pfcprice



---

## INTRODUCTION

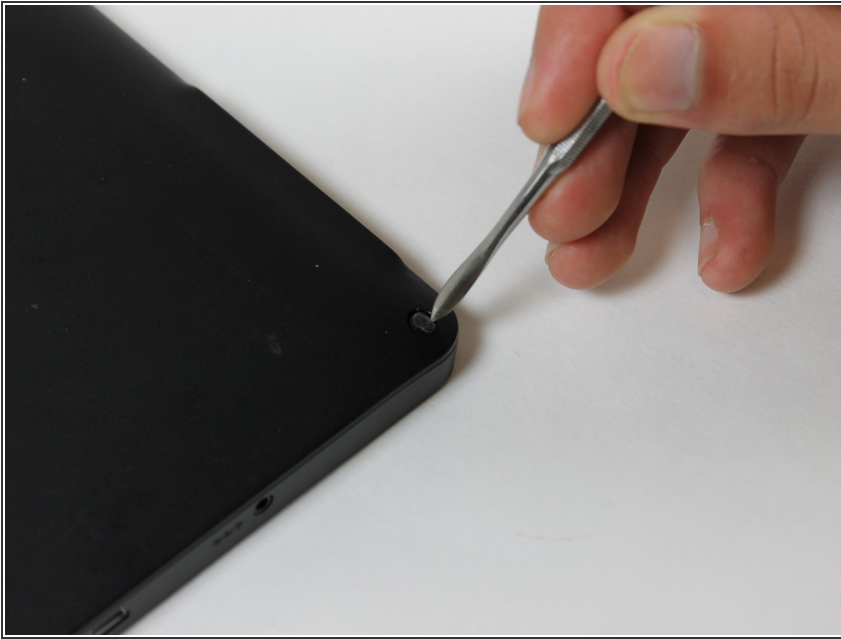
This guide demonstrates how to remove and replace a Pandigital Super Nova battery and preserve the function of your device.

---

### TOOLS:

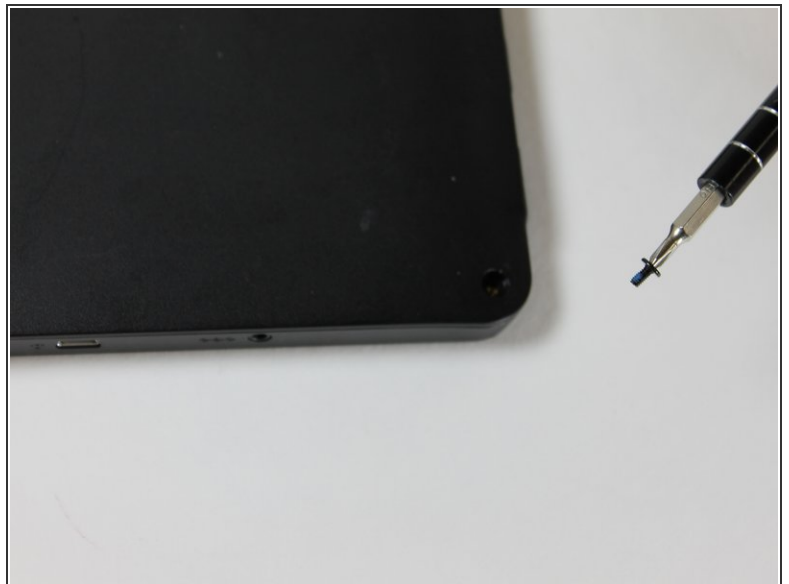
- [Metal Spudger Set](#) (1)
  - [Phillips #0 Screwdriver](#) (1)
  - [Tweezers](#) (1)
  - [iFixit Opening Tools](#) (1)
-

## Step 1 — Battery



- Remove the screw covers from each corner of the back side of the device.
- Set aside.

## Step 2



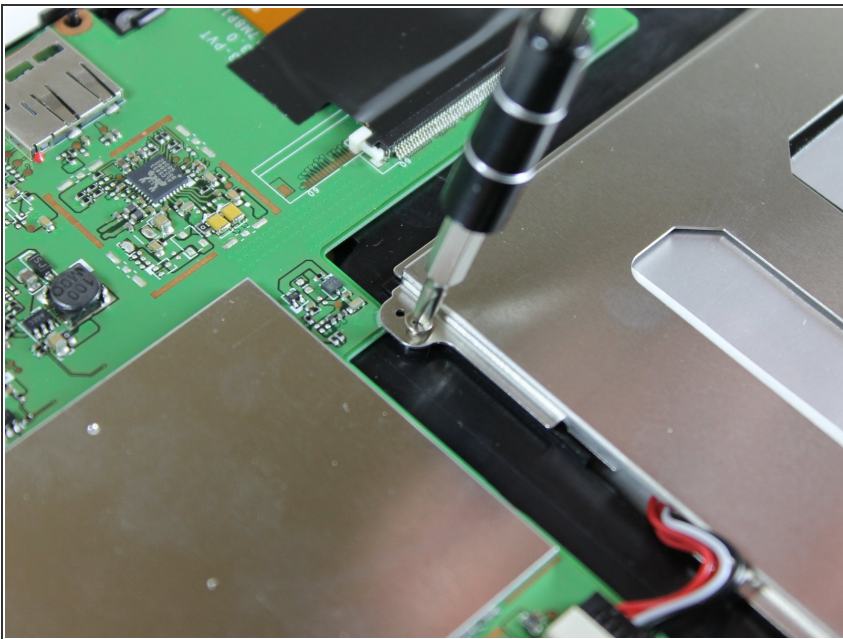
- Using a Philips screwdriver, remove all four .15 mm screws from each corner.
- Set aside.

### Step 3



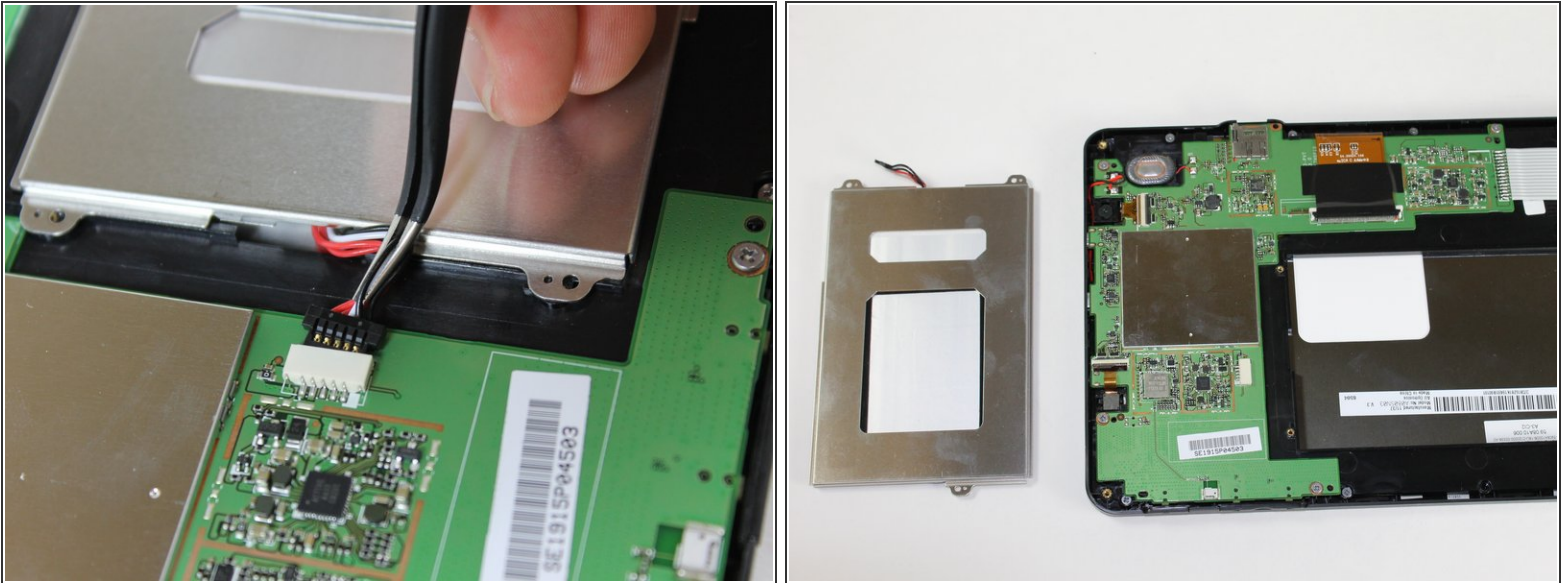
- Using the plastic opening tool, remove the back cover of the device.

### Step 4



- Remove the three .11 mm screws that hold the battery in place.
- Set aside.

## Step 5



- Unplug the battery and remove from device.
  - ⚠ Avoid touching the motherboard as it is fragile.

To reassemble your device, follow these instructions in reverse order.