



# Creative Zen Vision M Battery Replacement

If the Creative Zen Vision M is not charging the battery may need to be replaced.

Written By: Kirstie G



---

## INTRODUCTION

This guide will demonstrate how to replace a faulty battery. Tools needed are: 1mm Phillips head screwdriver and a blunt flat edged tool (a plastic card will work). Keep in mind that since the Creative Zen Vision M was released in 2005, and now discontinued, you may have difficulty purchasing a new battery.

---

### TOOLS:

- [Spudger](#) (1)
  - [Flathead Screwdriver](#) (1)
  - [Phillips #0 Screwdriver](#) (1)
-

## Step 1 — Opening the top



- Pop off the top plastic on the device with a flat tool like a flathead screwdriver.
- Unscrew and remove the two exposed Phillips head screws

## Step 2 — Opening the device



- Work your way around the recess of the device with a flat tool like a flathead screwdriver.
- Don't try attempt to open it from the recess between the buttons and the device.



### Step 3 — Detaching the wires from the screen



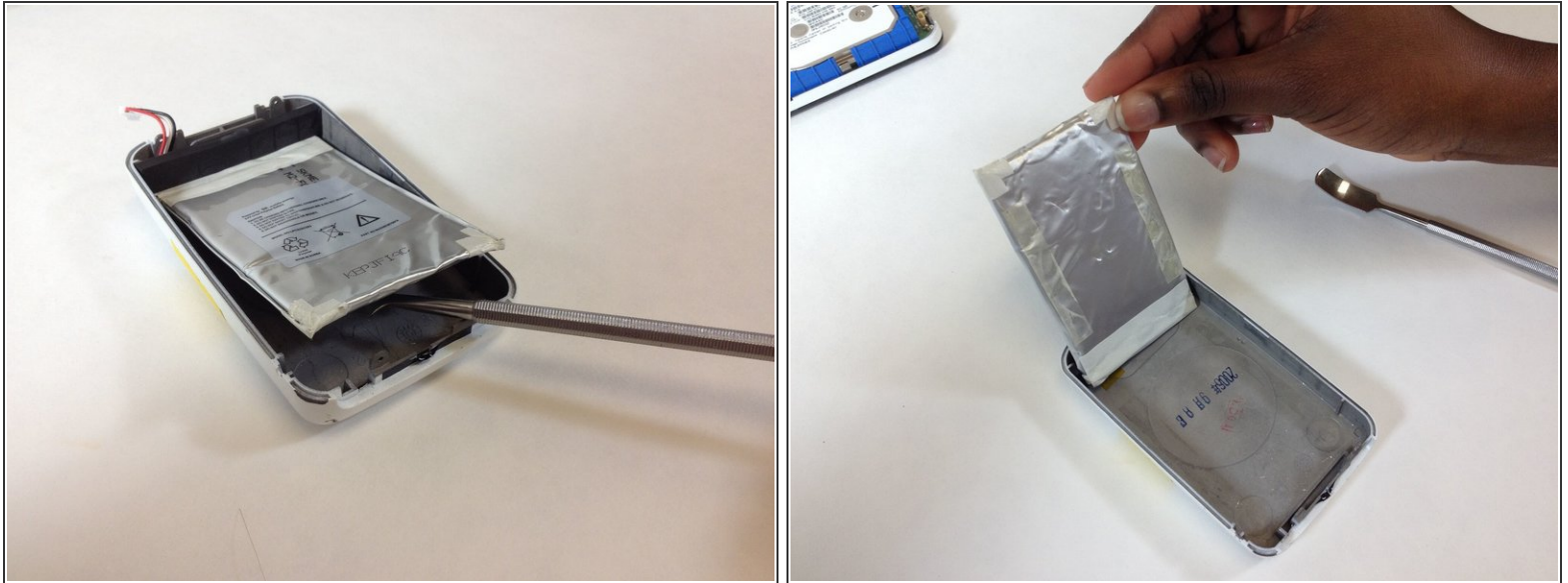
- To detach wires from the screen, gently tug on the wires connected to the battery. They are located on the bottom half of the screen.

### Step 4 — Releasing the battery



- To begin removing the battery, move the wires out from under the black foam at the bottom of the device

## Step 5 — Removing the battery



- Use a plastic opening tool or nylon spudger to lift up the battery.

**i** Battery may be glued on the edges.

**!** The metal spudger is great for serious prying power, but the regular black nylon spudger should be used whenever possible, especially around batteries.

To reassemble your device, follow these instructions in reverse order.