



# Apple Time Capsule Model A1254 Back Plate Replacement

Removing a damaged base plate for an Apple Time Capsule and replacing it.

Written By: Keaton Frahmman



---

## INTRODUCTION

The base plate serves as the under casing for the device. It provide structural security and protection for the internal components. If the base plate is damaged it may put the internal hardware at risk and should be replaced. The rubber covering is held in place by an adhesive and make take some time remove.

---

### TOOLS:

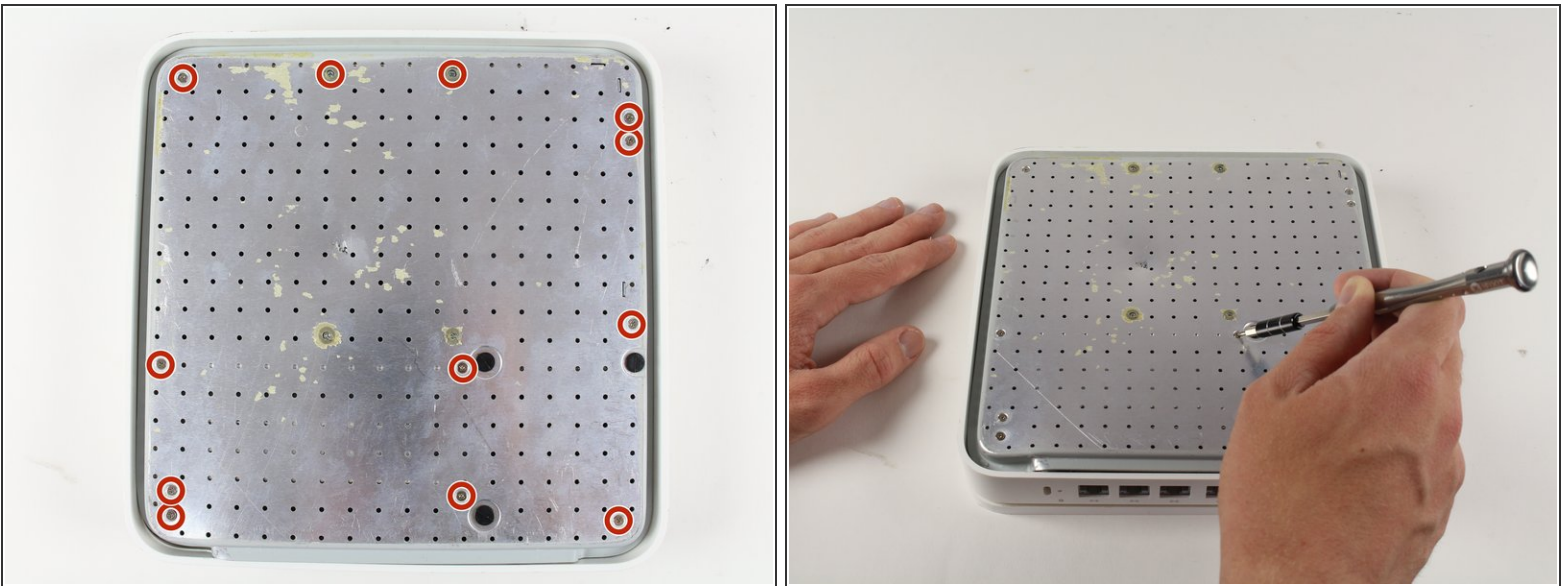
- [Metal Spudger](#) (1)
  - [Phillips #00 Screwdriver](#) (1)
-

## Step 1 — Back Plate



- Turn the device upside down to reveal the rubber section of the back plate. Using a metal spudger, carefully wedge the blunt tip into the space between the aluminum back plate and the rubber, separating the two pieces.
- ⓘ This may take a few minutes to pry the rubber off completely. Once you are able to get a grip on the rubber it is easier to peel it off using your hands.
- ⓘ Don't worry about re-applying adhesive to the rubber; the remaining adhesive has plenty of strength to affix itself to the aluminum.

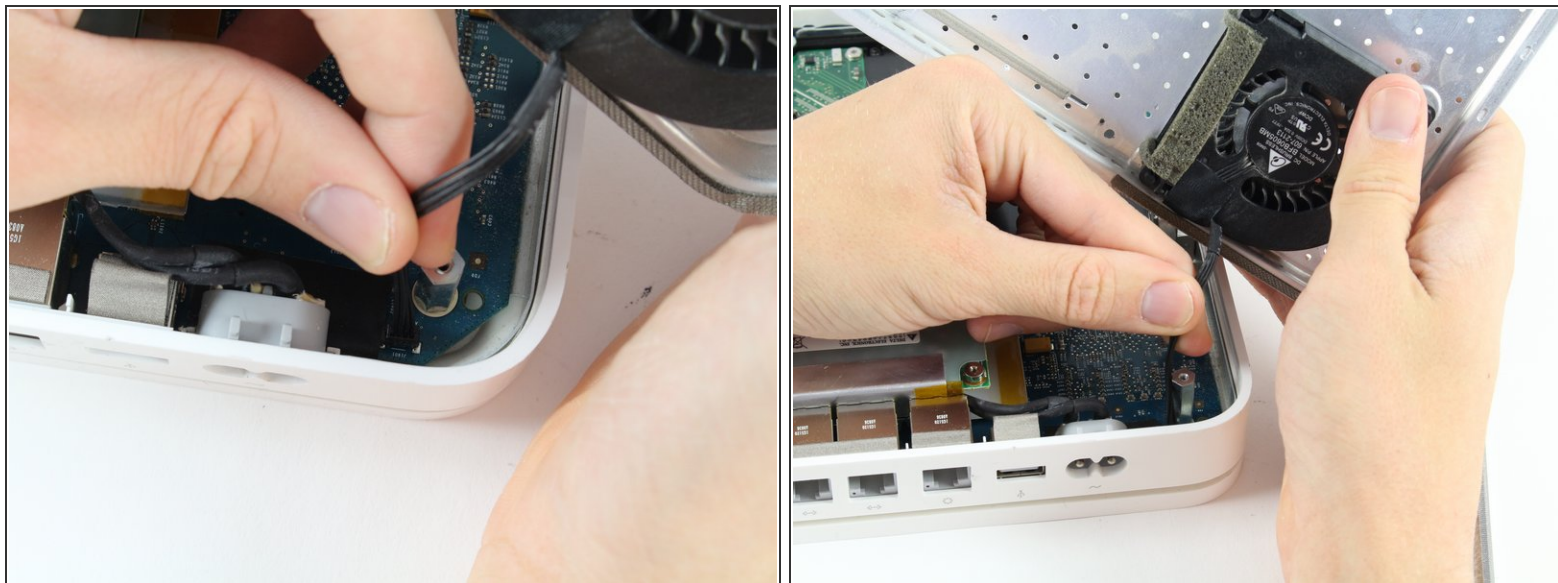
## Step 2



- Remove the ten 3mm screws with a Phillips #00 screwdriver.
- ⓘ The screws with adhesive covering **do not** need to be removed.

This document was generated on 2019-09-18 02:36:49 AM (MST).

### Step 3



- The fan affixed to the back plate is connected to the logic board. A small wire must be detached to fully remove the back plate.
- Pull the base of the wire close to the logic board and the connector will pop off.

To reassemble your device, follow these instructions in reverse order.