



# iPad 2 CDMA LCD Replacement

Prereq only for removing the front panel.

Written By: Phillip Takahashi



## INTRODUCTION

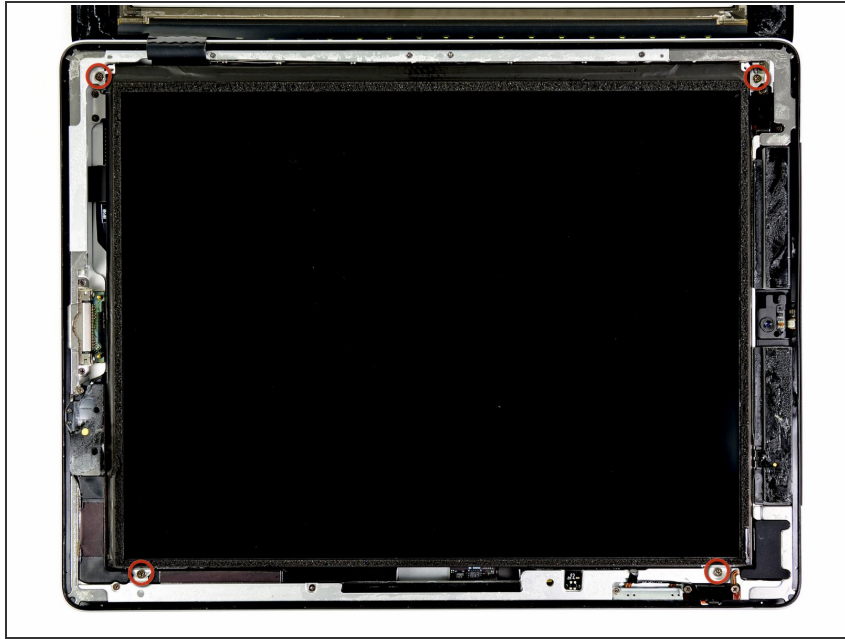
Prereq only for removing the front panel.

---

### TOOLS:

- [Phillips #0 Screwdriver](#) (1)
-

## Step 1 — LCD



- Remove the four 2.0 mm Phillips #0 screws securing the LCD to the rear case.

## Step 2



- The front panel ribbon cables are connected beneath the LCD. To access them, you'll need to temporarily flip the LCD over and out of the way.
  - ⚠ Be very careful when moving the LCD, and do not attempt to remove it from the iPad—its display data cable will remain connected while it is rotated over.
- Lift the LCD from its long edge closest to the volume buttons and gently flip it out of the rear case—like turning the page in a book.
- Set the LCD face down on the front panel.

To reassemble your device, follow these instructions in reverse order.

This document was last generated on 2019-05-19 02:05:52 AM.