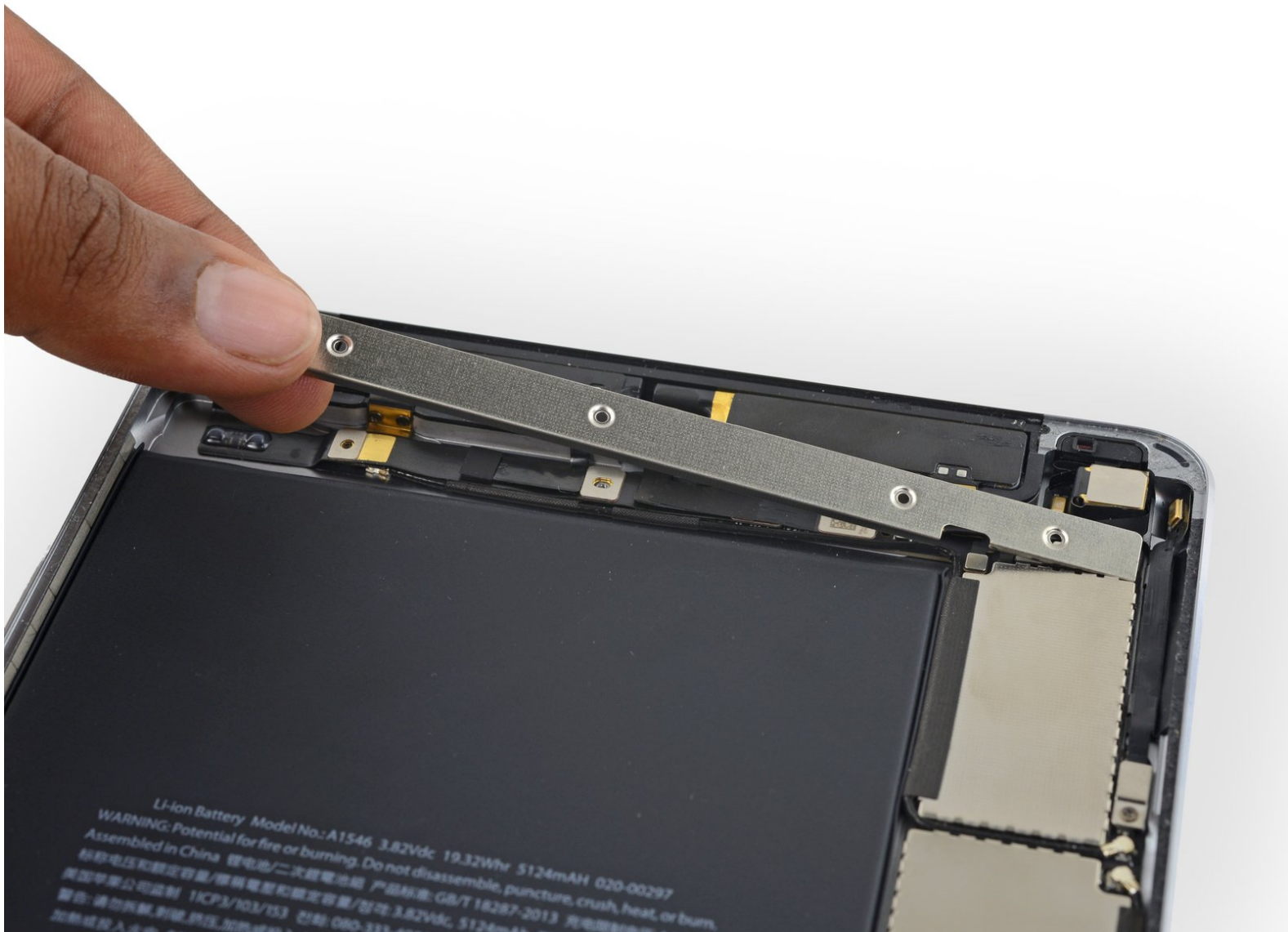




iPad mini 4 LTE Upper Component Bracket Replacement

Prerequisite for removing the upper component cable bracket from the iPad mini 4 LTE.

Written By: Evan Noronha



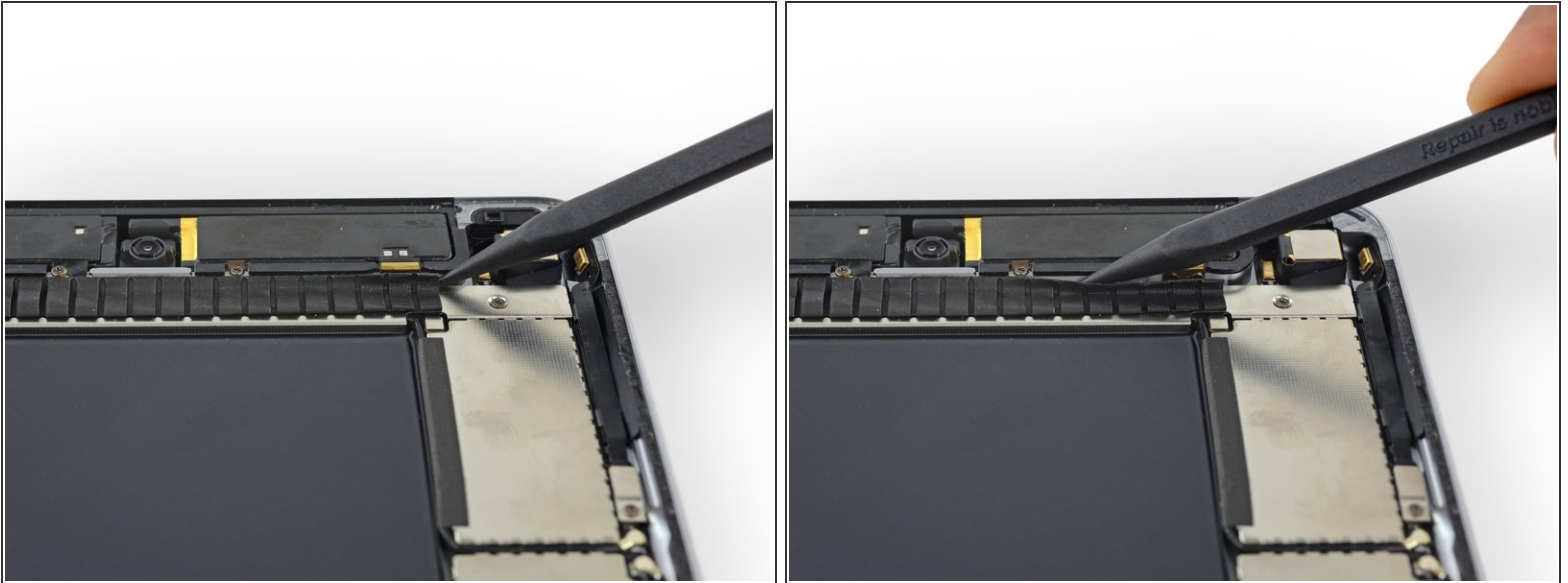
INTRODUCTION

Prerequisite guide for accessing upper components in an iPad mini 4 LTE.

TOOLS:

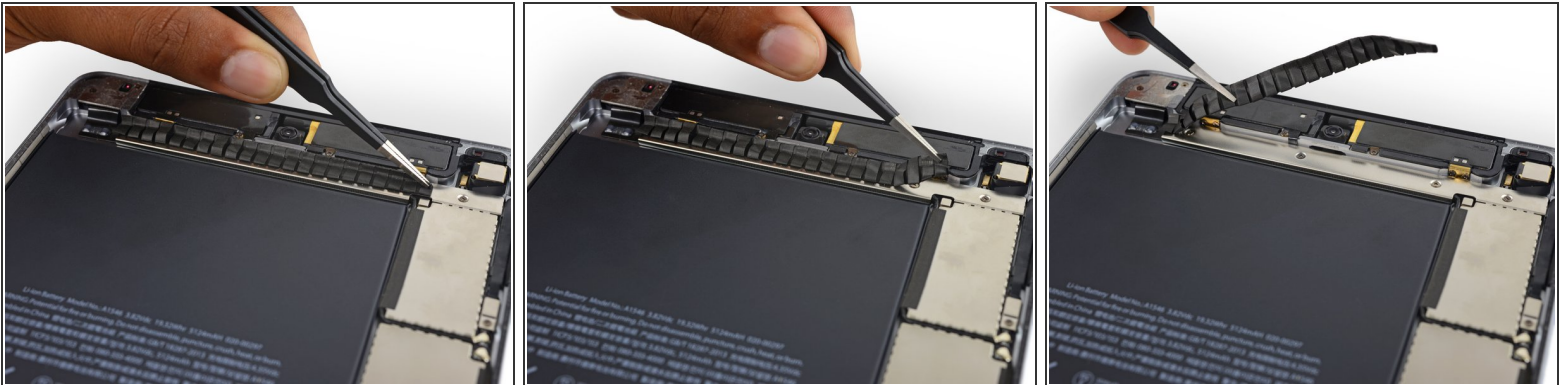
- [Phillips #00 Screwdriver](#) (1)
-

Step 1 — Upper Component Bracket



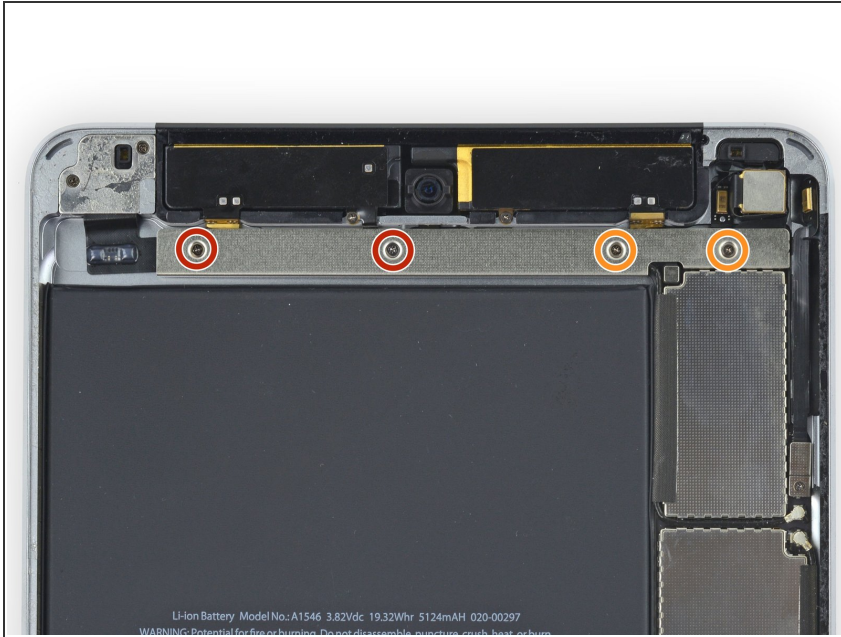
- Run the pointed end of a spudger between the looped tape and the plastic cellular antenna housing to make it easier to peel the tape up.

Step 2



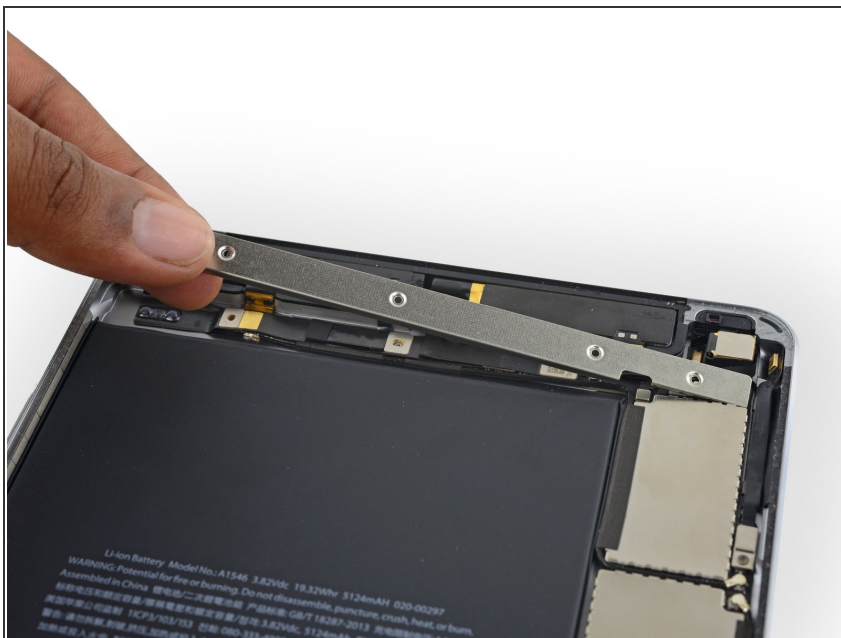
- Use tweezers to peel up the looped tape adhered over the upper component cable bracket.

Step 3



- Remove the following four Phillips screws holding the upper component bracket in place:
 - Two 2.1 mm screws
 - Two 1.2 mm screws

Step 4



- Remove the upper component cable bracket.

To reassemble your device, follow these instructions in reverse order.