



# Nintendo 3DS 2015 SD Card Reader Replacement

Replace the SD card reader on the 3DS 2015.

Written By: Tyler Starr



---

## INTRODUCTION

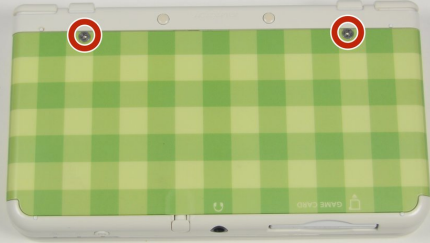
If your device won't read SD cards you may need to replace the SD card reader. Be careful of the three tri-wing screws on the SD card reader, as these are soft and strip easily. Go slow and press down firmly on the screw.

---

### TOOLS:

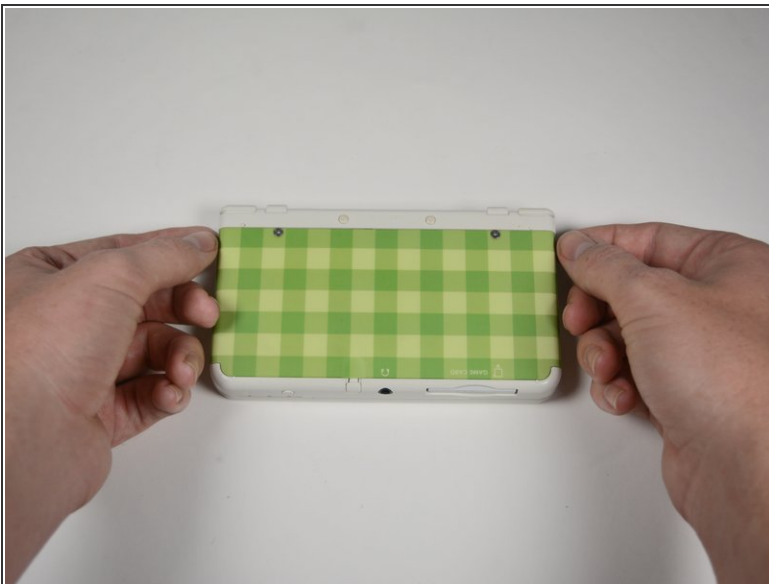
- [Phillips #0 Screwdriver](#) (1)
  - [iFixit Opening Tools](#) (1)
  - [Tri-point Y0 Screwdriver](#) (1)
-

## Step 1 — Battery



- Unscrew the two 3mm Phillips #0 head screws along the top edge of the device.
- ⚠ The screws on the back panel strip easily. Go slowly and press down firmly.
- ⓘ The screws on the back panel are held in by locking washers, so they won't come out of the back panel.

## Step 2



- Pull the top corner tabs of the front face plate outward and towards you.
- Pull the faceplate up and out of the slots at the bottom of the device.
- Set aside the back faceplate.

### Step 3



- Insert a plastic opening tool into the notch at the top of the battery.
- Pry the battery up with the plastic opening tool.

### Step 4 — SD Card Reader




- Unscrew the three 3mm Y0 screws along the right and bottom of the SD card reader.
- ⓘ The bottom of the SD card reader should slightly pop out after removing the screws.

## Step 5

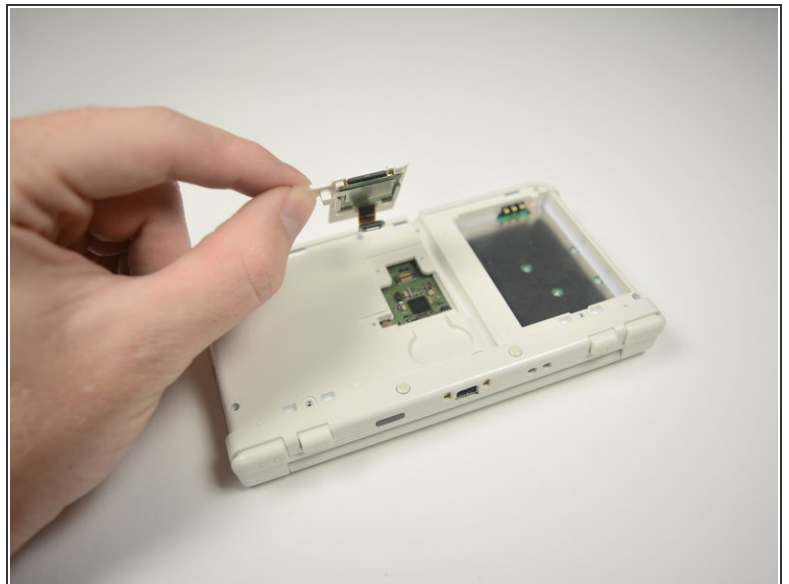


- Pull the SD card reader from the edge with two holes gently to free the tab at the top of the SD card reader.

 Don't completely pull the SD card out of the device yet. There is a ribbon cable connected under the SD card reader.

- Reorient the device so that the power jack faces you.

## Step 6



- Lift the SD card reader gently.
- Use a plastic opening tool to pry the SD card ribbon cable off the socket on the motherboard.
- Lift the SD card reader out of the lower casing.

To reassemble your device, follow these instructions in reverse order.