



Magellan RoadMate 5120-LMTX Back Cover Replacement

Removing the back cover from the device will allow you to access other components. This step is critical if the device needs to be repaired.

Written By: Chris Blaskowski



INTRODUCTION

The back cover of the device keeps all the components safe from damage and must be removed for any component to be replaced in the device. The back cover is held on by screws and is very easy to remove.

TOOLS:

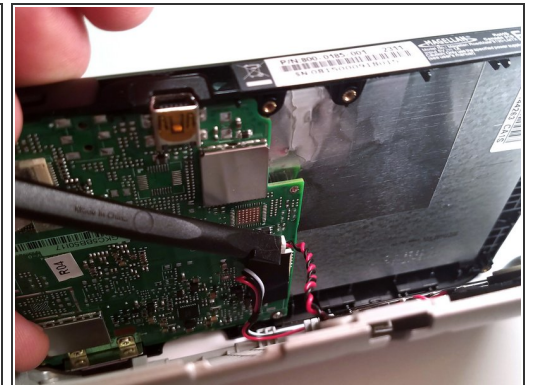
- [iFixit Opening Tools](#) (1)
 - [Phillips #00 Screwdriver](#) (1)
 - [Spudger](#) (1)
-

Step 1 — Back Cover



- i** Power off the Magellan RoadMate before beginning.
- Remove the six 5mm Phillips #00 screws from the back of device.

Step 2



- Pry back cover off with a plastic opening tool just enough to see where the speaker is attached to the motherboard.
- !** Do not fully open the back cover or you risk damaging the speaker wire.
- Use a spudger to disconnect the speaker connection from the motherboard.

To reassemble your device, follow these instructions in reverse order.