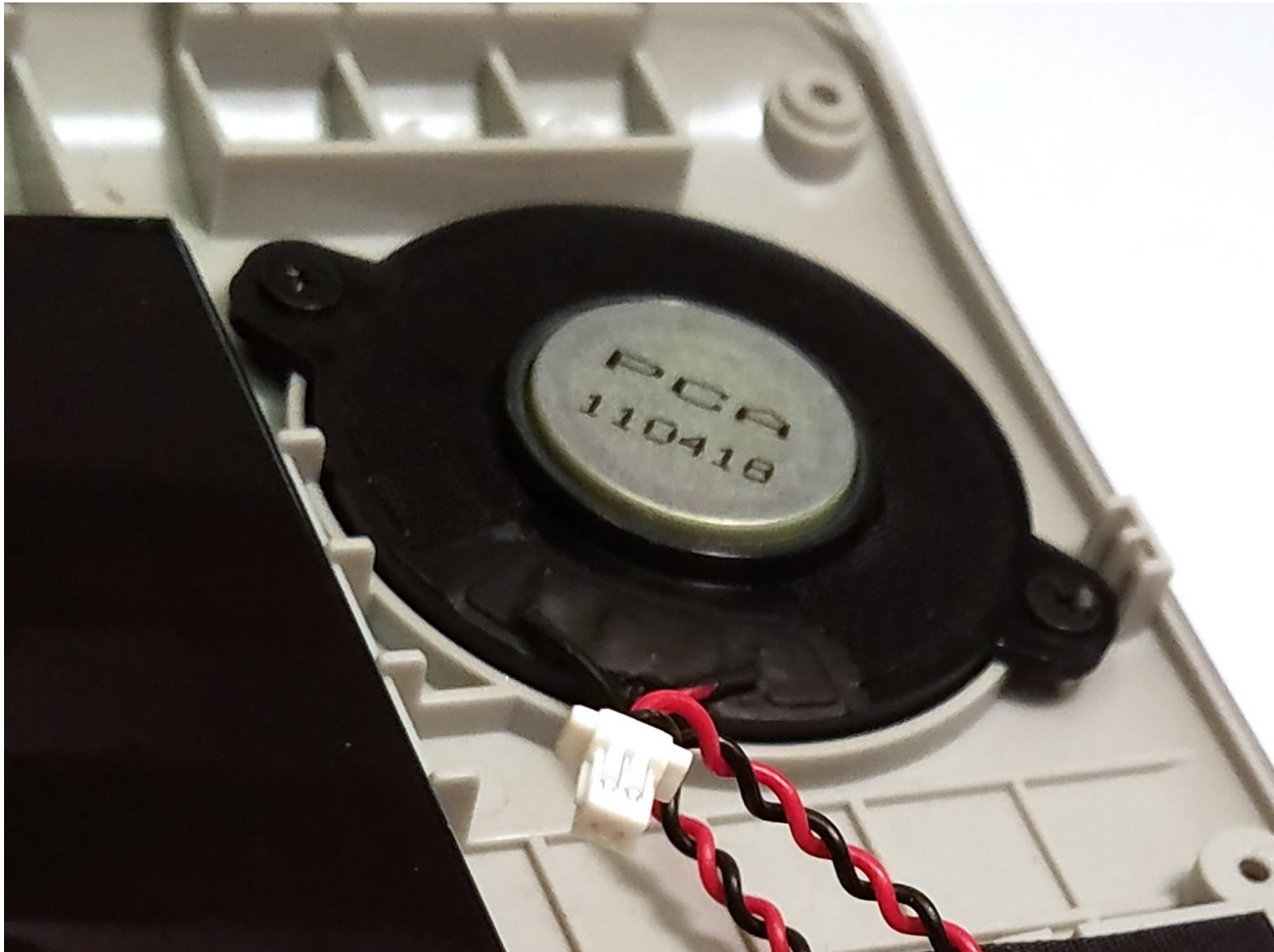




# Magellan RoadMate 5120-LMTX Speaker Replacement

Replace your speaker to restore sound to your RoadMate.

Written By: Chris Blaskowski



---

## INTRODUCTION

The speaker removal process is easy to accomplish. The device has wires that can be damaged if you are not careful when opening the device. There will be tape holding some of the wires in place. Make sure to retain the tape or have more tape on hand so that it can be reapplied when reassembling your RoadMate.

---

### TOOLS:

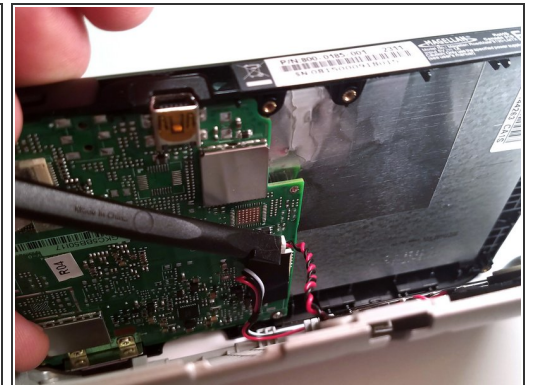
- [iFixit Opening Tools](#) (1)
  - [Phillips #00 Screwdriver](#) (1)
  - [Spudger](#) (1)
-

## Step 1 — Back Cover



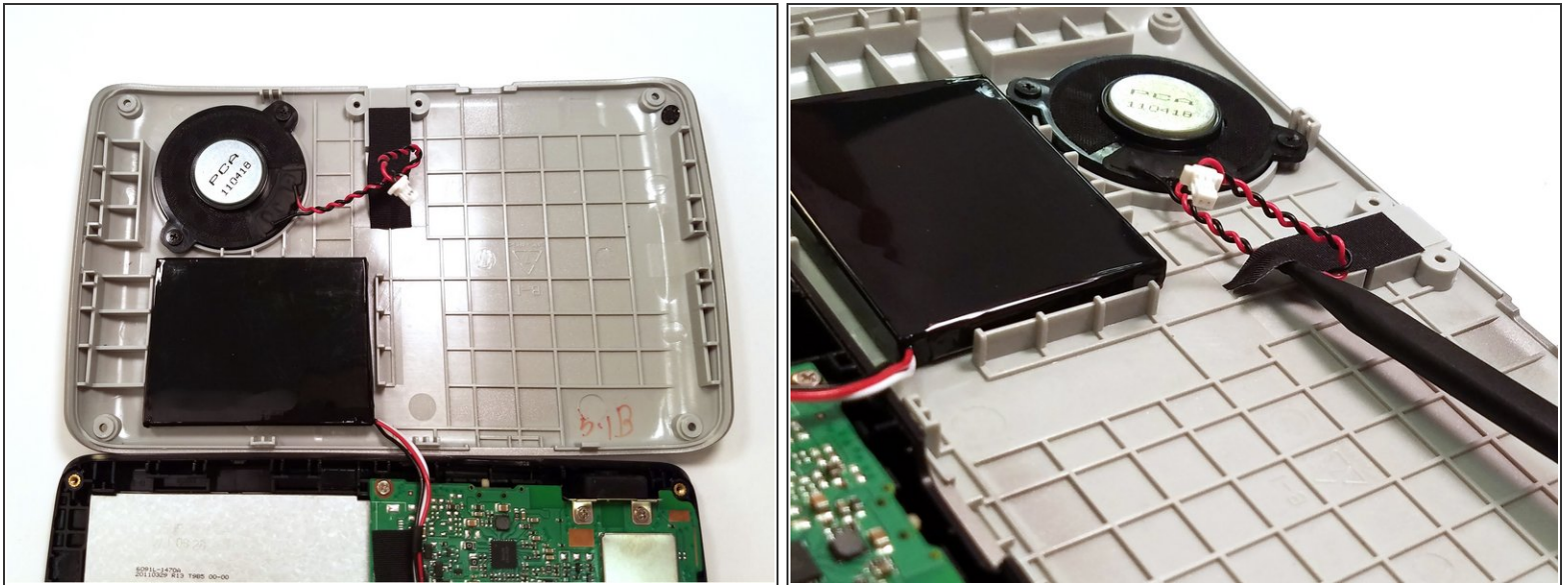
- ⓘ Power off the Magellan RoadMate before beginning.
- Remove the six 5mm Phillips #00 screws from the back of device.

## Step 2



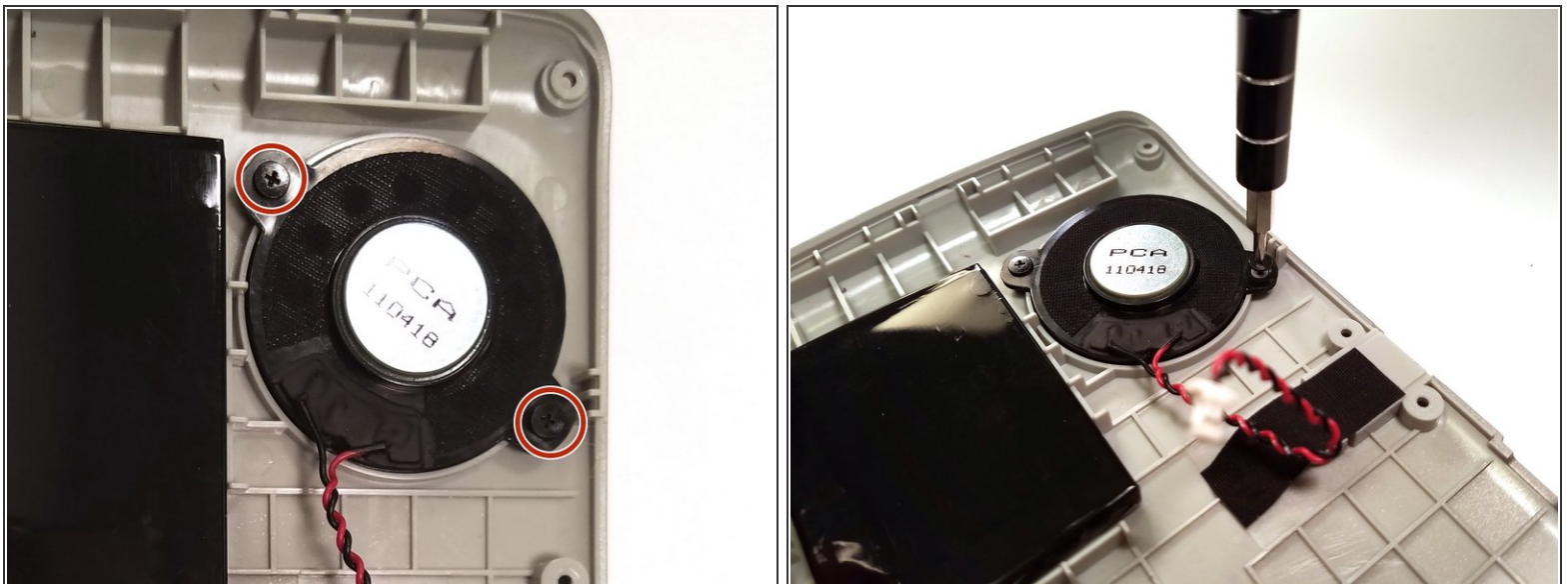
- Pry back cover off with a plastic opening tool just enough to see where the speaker is attached to the motherboard.
- ⚠ Do not fully open the back cover or you risk damaging the speaker wire.
- Use a spudger to disconnect the speaker connection from the motherboard.

### Step 3 — Speaker



- Open the device and remove the tape from the speaker wire using the spudger.

### Step 4



- Remove the two 4mm Phillips #00 screws securing the speaker assembly and remove speaker.

To reassemble your device, follow these instructions in reverse order.