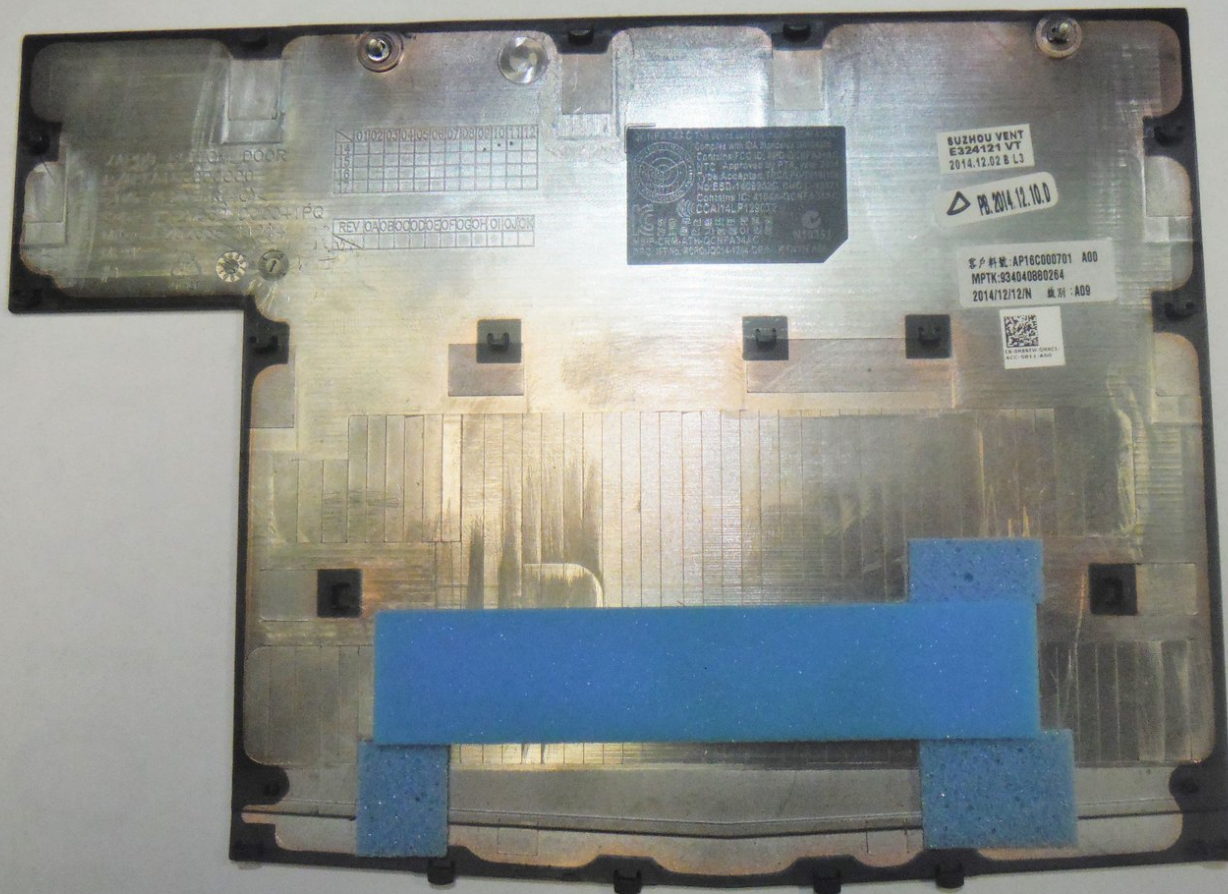




Dell Alienware 13 Base Panel Replacement

This guide shows how to replace the base panel for a Dell Alienware 13 laptop.

Written By: Adam Russell



INTRODUCTION

This guide will show the user how to replace a cracked, broken, or damaged base panel on the Dell Alienware 13 laptop.

TOOLS:

- [Heavy-Duty Spudger](#) (1)
 - [Phillips #1 Screwdriver](#) (1)
-

Step 1 — Base Panel



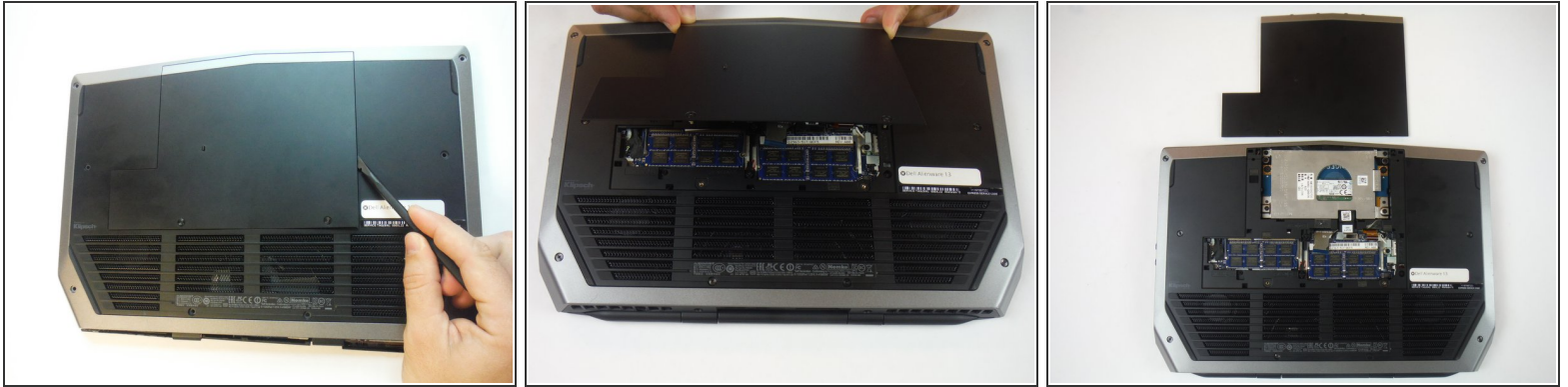
- ⚠ Working on an electrical device while plugged in can cause injury due to electrical shock. Ensure that all external power is disconnected from the device.
- Close the device and turn the device over.

Step 2



- Remove (2) 5 mm Phillips head screws attaching the small access panel to the base using a Phillips # 1 screwdriver.
- ⓘ The (2) screws are attached to the base panel with retaining clips and won't completely detach from the panel.

Step 3



- Remove the small access panel using a heavy duty spudger.

To reassemble your device, follow these instructions in reverse order.