



# RCA Small Wonders Camcorder CC176 Viewfinder Replacement

Step by step instructions directing the users how to replace a faulty viewfinder on an RCA Small Wonders Camcorder CC176.

Written By: Allison Baudoin



---

## INTRODUCTION

In order to replace the viewfinder on your RCA Small Wonders Camcorder CC176, it only takes a small flathead screwdriver, a safe place to keep the screws that you will take out of the camcorder, and a little bit of patience.

---

### TOOLS:

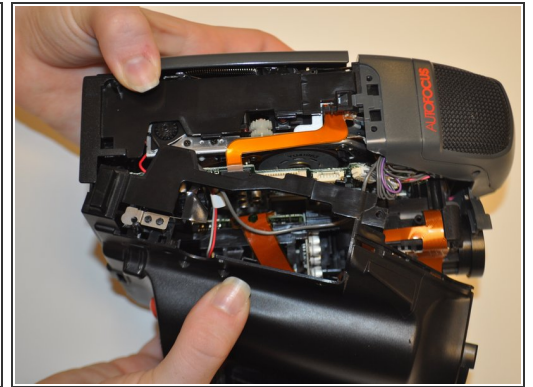
- [Essential Electronics Toolkit](#) (1)
-

## Step 1 — Viewfinder



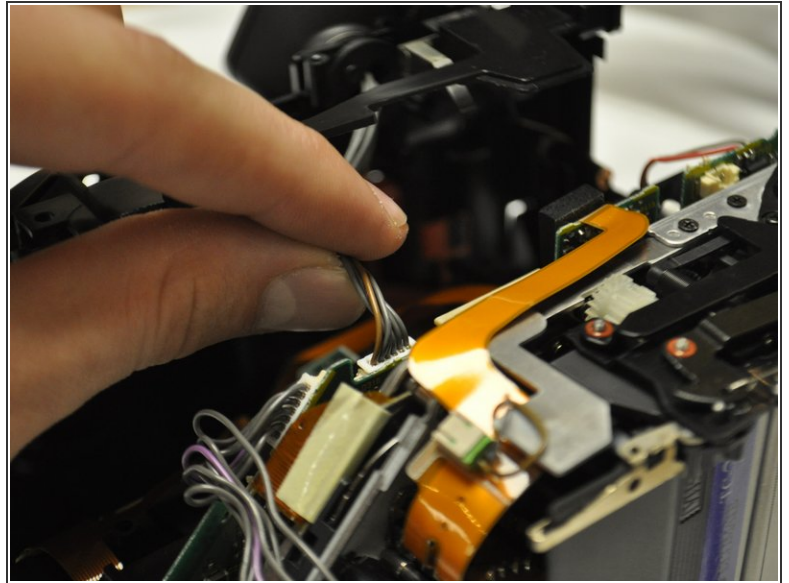
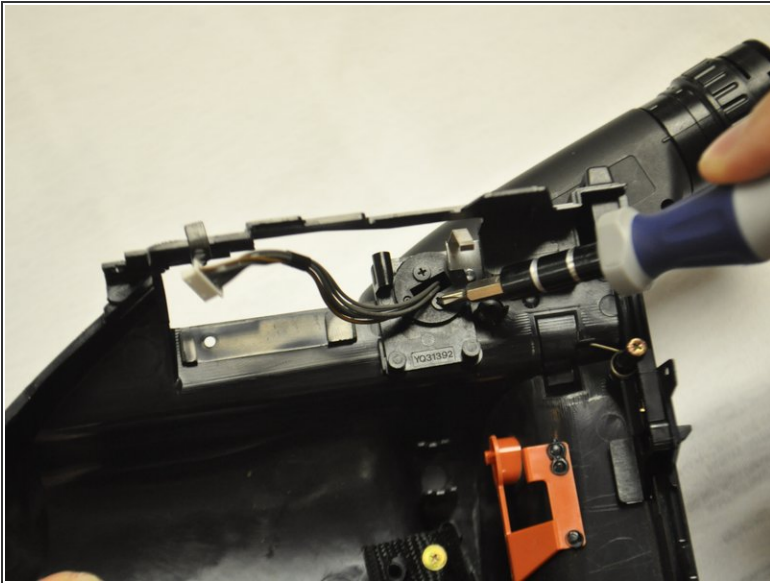
- Remove the 5 screws that secure the control panel (located on the top of the device) by using your small flathead screwdriver.
- Loosen the panel from the device until you are able to remove it.

## Step 2



- Remove the remaining 21 screws on the camcorder.
- Begin separating the plastic casing from the inner components of the device.

### Step 3



- Grasping the viewfinder in hand, carefully remove the two screws that secure the mounting device.
- Locate the gray electrical cord that connects the viewfinder to the inner components of the camera. Gently unplug the gray cord and loosen the viewfinder from the device.

### Step 4



- Separate the viewfinder from the device and feed the gray cord through the hole in the plastic casing.

To reassemble your device, follow these instructions in reverse order.