



# Sony Vaio SVE111B11L Battery Replacement

This guide will help remove a faulty battery in a Sony Vaio SVE111B11L laptop that will not hold a charge.

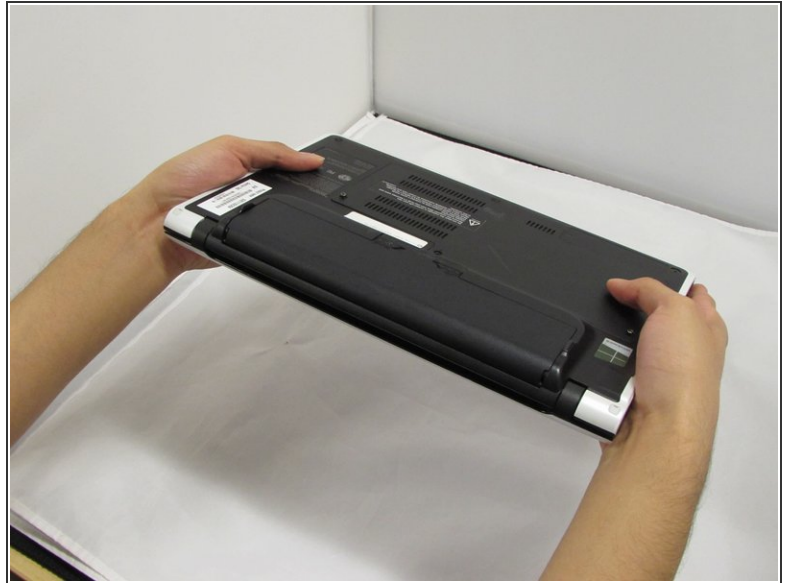
Written By: John Noll




## INTRODUCTION

This guide is to help replace a damaged battery in a Sony Vaio SVE111B11L laptop with ease.

## Step 1 — Battery



 Remove the charging adaptor. Some charge may still be in the battery or computer. **DO NOT** touch connectors or copper yellow connector.

- Locate the battery on the bottom of the computer.
- Flip the computer so that the battery faces you.

## Step 2



- Locate the two latches with the words “lock” and “release” on them.

### Step 3



- Push the latches towards each other and lift the battery to remove it.

To reassemble your device, follow these instructions in reverse order.